

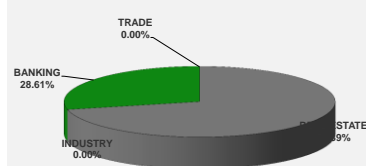
LISTED COMPANIES	LISTED SHARES	MARKET CAP.	TOTAL ORDINARY SHARES	PREFERRED SHARES	PREFERRED SHARES ISSUE PRICE	TOTAL MARKET CAP.	CUR.	TRADED VOLUME	TRADED VALUE	CLOSING PRICE	OPEN PRICE	HIGH PRICE	LOW PRICE	PREVIOUS PRICE
	(MM)	(MM \$)	(MM)	(MM)	USD	(MM \$)								
SOLIERE A	100.00	789.00	100.00			789.00	USD	264,946	2,067,314	7.89	7.80	7.97	7.77	7.77
SOLIERE B	65.00	502.45	65.00			502.45	USD	676	5,225	7.73	7.73	7.73	7.73	7.60
BQ.LIB. POUR LE COMMERCE	51.03	50.52	152.70			151.17	USD	-	-	0.99	-	-	-	0.99
BQ.LIB. POUR LE COMMERCE PEF. "B"	0.55	55.00		0.55		55.00	USD	-	-	100.00	-	-	-	100.00
BQ.LIB. POUR LE COMMERCE PEF. "C"	0.35	35.00		0.35		35.00	USD	-	-	100.00	-	-	-	100.00
BQ.LIB. POUR LE COMMERCE PEF. "D"	0.75	75.00		0.75		75.00	USD	-	-	100.00	-	-	-	100.00
BANQUE AUDI	399.75	2390.50	399.75			2390.50	USD	4,500	26,900	5.98	6.00	6.00	5.95	6.00
BANQUE AUDI GDR	116.24	697.43				697.43	USD	47,357	285,262	6.00	6.07	6.07	6.00	6.00
BANQUE AUDI PREFERRED "G"	1.50	150.45		1.50	100.00	150.45	USD	-	-	100.30	-	-	-	100.30
BANQUE AUDI PREFERRED "H"	0.75	75.38		0.75	100.00	75.38	USD	-	-	100.50	-	-	-	100.50
BANQUE AUDI PREFERRED "I"	2.50	253.00		2.50	100.00	253.00	USD	-	-	101.20	-	-	-	101.20
BANK OF BEIRUT	16.82	316.26	50.47			948.79	USD	-	-	18.80	-	-	-	18.80
BANK OF BEIRUT PRIORITY	4.76	100.00				100.00	USD	-	-	21.00	-	-	-	21.00
BANK OF BEIRUT PREFERRED SHARES "H"	5.40	136.62		5.40	25.00	136.62	USD	710	17,963	25.30	25.30	25.30	25.30	25.30
BANK OF BEIRUT PREFERRED SHARES "I"	5.00	126.25		5.00	25.00	126.25	USD	-	-	25.25	-	-	-	25.25
BANK OF BEIRUT PREFERRED SHARES "J"	3.00	75.90		3.00	25.00	75.90	USD	-	-	25.30	-	-	-	25.30
BANK OF BEIRUT PREFERRED SHARES "K"	4.00	101.00		4.00	25.00	101.00	USD	-	-	25.25	-	-	-	25.25
BYBLOS BANK	565.52	921.79	565.52			921.79	USD	9,385	15,267	1.63	1.62	1.64	1.62	1.60
BYBLOS BANK GDR	1.31	104.73				104.73	USD	-	-	80.00	-	-	-	80.00
BYBLOS BANK PREFERRED SHARES 2008	2.00	202.00		2.00	100.00	202.00	USD	11,946	1,206,719	101.00	101.10	101.10	100.80	102.00
BYBLOS BANK PREFERRED SHARES 2009	2.00	204.00		2.00	96.00	204.00	USD	-	-	102.00	-	-	-	102.00
BQ.EUROPEENNE PR.M.O	51.40	84.30	62.00			101.68	USD	-	-	1.64	-	-	-	1.64
BQ.EUROPEENNE PR.M.O PREFERRED 20	0.35	35.00		0.35	100.00	35.00	USD	-	-	100.00	-	-	-	100.00
BLOM BANK GDR	73.90	914.83				914.83	USD	32,535	401,676	12.38	12.40	12.40	12.25	12.40
BLOM BANK	215.00	2451.00	215.00			2451.00	USD	-	-	11.40	-	-	-	11.40
RASAMNY-YOUNIS MOTORS CO	10.92	35.49	27.30			88.73	USD	-	-	3.25	-	-	-	3.25
HOLCIM Liban	19.52	228.34	19.52			228.34	USD	-	-	11.70	-	-	-	11.70
STE DES CIMENTS BLANCS B	6.00	21.00	6.00			21.00	USD	-	-	3.50	-	-	-	3.50
STE DES CIMENTS BLANCS N	3.00	4.86	3.00			4.86	USD	-	-	1.62	-	-	-	1.62

TOTAL EXECUTED	1,728.31	11,137.09	1,666.25	11,940.89	372,055	\$4,026,326
Official USD Closing	1507.5					

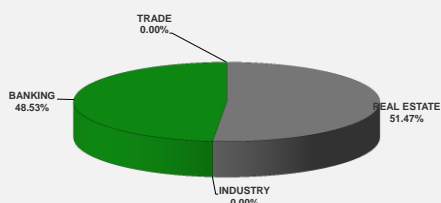
LEBANESE GLOBAL DEPOSITARY RECEIPTS	SHARES MM	BID \$	ASK \$	MID PRICE \$
BLOM BANK	73.90	12.25	12.35	12.30
BYBLOS BANK	1.31	76.00	0.00	76.00
AUDI BANK	116.24	6.00	6.13	6.07

STOCK INDEX	VALUE	PREVIOUS VALUE	% OF CHANGE
MARKET VALUE WEIGHTED INDEX	85.33	84.56	0.91%
NUMBER OF TRANSACTIONS	76		

BEIRUT STOCK EXCHANGE DAILY TRADING VOLUME



BEIRUT STOCK EXCHANGE DAILY TRADING VALUE \$



Disclaimer: The Capital Markets Authority (CMA) publishes reports for general information purposes only. However, under no circumstances the CMA will accept any responsibility or liability in connection with the use of the information provided in these reports or on this website.

MATURITY	CURRENCY	ISSUED AMMOUNT (MM)	OUTSTANDING AMOUNT (MM)	COUPON	ISSUE P.	BID\$	ASK\$	MID. P	YIELD	SPREAD	DURATION	CONVEXITY
Lebanon / 12-10-2017	USD	775.00	775.00	5.000	100.000	100.100	100.400	100.100	4.291	3.248	0.157	0.050
Lebanon / 27-12-2017	USD	950.00	32.50	5.000	100.000	99.803	99.839	99.803	5.511	4.380	0.359	0.258
Lebanon / 31-12-2017	USD	2,007.51	100.38	4.000	100.000	99.688	100.438	99.688	4.823	3.676	0.370	0.273
Lebanon / 07-03-2018	USD	700.00	70.00	5.000	100.000	99.805	101.805	99.805	5.632	4.191	0.303	0.303
Lebanon / 27-05-2018	USD	200.00	20.00	5.000	100.000	99.800	101.800	99.800	5.371	4.036	0.519	0.585
Lebanon / 12-06-2018	USD	700.00	700.00	5.150	100.000	100.375	102.375	100.375	4.673	3.453	0.799	1.040
Lebanon / 12-11-2018	USD	1,025.00	1,025.00	5.150	100.000	100.650	100.650	100.650	4.724	3.506	1.177	1.989
Lebanon / 28-11-2018	EUR	445.00	445.00	5.350	100.000	101.380	103.370	101.380	4.208	4.879	1.197	2.634
Lebanon / 23-04-2019	USD	500.00	500.00	6.750	100.000	100.125	102.125	100.125	5.416	4.091	1.573	3.320
Lebanon / 20-05-2019	USD	650.00	650.00	6.000	100.000	101.250	101.850	101.250	5.243	3.918	1.638	3.570
Lebanon / 28-11-2019	USD	1,500.00	1,500.00	5.450	100.000	99.950	100.250	99.950	5.469	4.145	2.100	5.603
Lebanon / 09-03-2020	USD	1,200.00	1,200.00	6.375	100.000	101.500	102.200	101.500	5.736	4.257	2.283	6.664
Lebanon / 14-04-2020	USD	700.00	700.00	5.800	100.000	99.700	100.350	99.700	5.919	4.446	2.391	7.197
Lebanon / 19-06-2020	USD	600.00	600.00	6.150	100.000	100.500	101.500	100.500	5.953	4.472	2.557	8.110
Lebanon / 12-04-2021	USD	2,092.47	2,092.47	8.250	100.000	107.124	107.462	107.124	6.046	4.570	3.076	11.900
Lebanon / 27-05-2022	USD	500.00	500.00	6.250	100.000	100.125	101.125	100.125	6.216	4.452	4.033	19.770
Lebanon / 04-10-2022	USD	1,540.00	1,540.00	6.100	100.000	99.400	99.900	99.400	6.237	4.474	4.284	22.320
Lebanon / 27-01-2023	USD	1,100.00	1,100.00	6.000	100.000	98.350	98.800	98.350	6.362	4.600	4.565	25.300
Lebanon / 26-05-2023	USD	500.00	500.00	6.400	100.000	100.250	101.250	100.250	6.345	4.580	4.714	27.120
Lebanon / 22-04-2024	USD	700.00	700.00	6.650	100.000	100.170	101.570	100.170	6.616	4.606	5.232	33.970
Lebanon / 04-11-2024	USD	500.00	538.47	6.250	100.000	98.700	99.400	98.700	6.476	4.466	5.631	39.197
Lebanon / 03-12-2024	USD	250.00	250.00	7.000	100.000	102.600	103.010	102.600	6.544	4.532	5.603	39.078
Lebanon / 26-02-2025	USD	800.00	800.00	6.200	100.000	98.150	98.750	98.150	6.514	4.504	5.755	41.550
Lebanon / 12-06-2025	USD	800.00	800.00	6.250	100.000	98.125	100.125	98.125	6.558	4.540	6.039	45.040
Lebanon / 27-11-2026	USD	1,600.00	1,600.00	6.600	100.000	99.250	99.900	99.250	6.708	4.516	6.759	57.922
Lebanon / 23-03-2027	USD	1,250.00	1,250.00	6.850	100.000	99.880	100.370	99.880	6.866	4.673	6.776	59.486
Lebanon / 29-11-2027	USD	1,000.00	1,000.00	6.750	100.000	99.300	99.950	99.300	6.844	4.651	7.225	67.250
Lebanon / 03-11-2028	USD	500.00	893.20	6.650	100.000	97.628	97.900	97.628	6.956	4.760	7.626	76.204
Lebanon / 25-05-2029	USD	1,000.00	1,000.00	6.850	100.000	99.375	100.375	99.375	6.927	4.732	7.878	81.770
Lebanon / 26-02-2030	USD	1,400.00	1,400.00	6.650	100.000	97.550	98.450	97.550	6.946	4.753	8.104	88.672
Lebanon / 22-04-2031	USD	300.00	300.00	7.000	100.000	99.300	100.700	99.300	7.079	4.882	8.531	99.480
Lebanon / 23-03-2032	USD	1,000.00	1,000.00	7.000	100.000	99.250	99.550	99.250	7.082	4.890	8.795	107.817
Lebanon / 02-11-2035	USD	600.00	600.00	7.050	100.000	98.750	99.250	98.750	7.173	4.978	9.931	143.427
Lebanon / 23-03-2037	USD	750.00	750.00	7.250	100.000	99.500	100.000	99.500	7.297	5.105	10.081	152.517
TOTAL PUBLIC SECTOR EUROBONDS		30,213.122	27,010.15									

EURO CDS

Not Available

LEBANESE PRIVATE SECTOR EUROBONDS

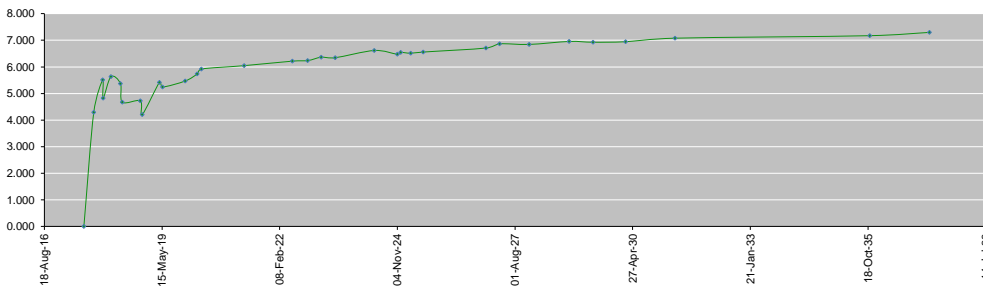
MATURITY	SIZE MM	TYPE	COUPON	Issue P.	BID \$	Ask \$	MID. P	YIELD	SPREAD	DURATION	CONVEXITY
BANK MED S.A.L/14-12-2017	USD 500	Euro CD	5.38	99.46	101.31	101.34	101.31	1.37	0.24	0.33	0.22
BANK BYBLOS S.A.L/21-06-2021	USD 300	Note	7	100	102.48	102.82	102.48	6.26	4.50	3.32	13.49

World Yields in Native Terms	O/N	3 Months	6 Months	9 Months	1 Year	2 Years	3 Years	5 Years	7 Years	10 Years	30 Years
EUR	-	-0.74	-0.72	-0.68	-0.69	-0.73	-0.65	-0.29	-0.06	0.38	1.12
U.S.A	-	1.04	1.15	--	1.21	1.33	1.48	1.77	2.01	2.20	2.78
U.K	-	0.19	0.20	--	0.24	0.21	0.24	0.47	0.71	1.06	1.71
Japan	-	-0.11	-0.12	-0.11	-0.11	-0.11	-0.09	-0.07	-0.02	0.06	0.85

Libor	USD	EUR	JPY	GBP
1 Months	1.23	-0.40	-0.04	0.25
2 Months	1.26	-0.38	-0.04	0.26
3 Months	1.31	-0.37	-0.02	0.28
6 Months	1.45	-0.30	0.00	0.41
1 Year	1.73	-0.20	0.11	0.60

Spot Rates	Bid	Ask
Lebanese Pound	1505.70	1510.70
Euro	1.18	1.1759
British Sterling Pound	1.30	1.2975
Japanese Yen	109.16	109.1700
Gold	1287.40	1288.15

Lebanese Republic USD Eurobonds Yield Curve



Disclaimer: The Capital Markets Authority (CMA) publishes reports for general information purposes only. However, under no circumstances the CMA will accept any responsibility or liability in connection with the use of the information provided in these reports or on this website.

Contact us by email: research@cma.gov.lb