

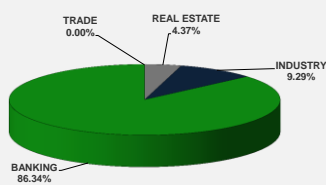
LISTED COMPANIES	LISTED SHARES	MARKET CAP.	TOTAL ORDINARY SHARES	PREFERRED SHARES	PREFERRED SHARES ISSUE PRICE	TOTAL MARKET CAP.	CUR.	TRADED VOLUME	TRADED VALUE	CLOSING PRICE	OPEN PRICE	HIGH PRICE	LOW PRICE	PREVIOUS PRICE
	(MM)	(MM \$)	(MM)	(MM)	USD	(MM \$)								
SOLIDERE A	100.00	816.00	100.00			816.00	USD	7,975	65,057	8.16	8.15	8.16	8.15	8.18
SOLIDERE B	65.00	512.20	65.00			512.20	USD	1,425	11,228	7.88	7.85	7.90	7.85	8.00
BQ.LIB. POUR LE COMMERCE	51.03	47.46	152.70			142.01	USD	-	-	0.93	-	-	-	0.93
BQ.LIB. POUR LE COMMERCE PEF. "B"	0.55	55.00		0.55		55.00	USD	-	-	100.00	-	-	-	100.00
BQ.LIB. POUR LE COMMERCE PEF. "C"	0.35	35.00		0.35		35.00	USD	-	-	100.00	-	-	-	100.00
BQ.LIB. POUR LE COMMERCE PEF. "D"	0.75	75.00		0.75		75.00	USD	-	-	100.00	-	-	-	100.00
BANQUE AUDI	399.75	2378.51	399.75			2378.51	USD	700	4,165	5.95	5.95	5.95	5.95	5.97
BANQUE AUDI GDR	116.24	702.08				702.08	USD	-	-	6.04	-	-	-	6.04
BANQUE AUDI PREFERRED "G"	1.50	151.80		1.50	100.00	151.80	USD	-	-	101.20	-	-	-	101.20
BANQUE AUDI PREFERRED "H"	0.75	75.90		0.75	100.00	75.90	USD	-	-	101.20	-	-	-	101.20
BANQUE AUDI PREFERRED "I"	2.50	253.00		2.50	100.00	253.00	USD	-	-	101.20	-	-	-	101.20
BANK OF BEIRUT	16.82	316.26	50.47			948.79	USD	-	-	18.80	-	-	-	18.80
BANK OF BEIRUT PRIORITY	4.76	100.00				100.00	USD	-	-	21.00	-	-	-	21.00
BANK OF BEIRUT PREFERRED SHARES "H"	5.40	136.62		5.40	25.00	136.62	USD	-	-	25.30	-	-	-	25.30
BANK OF BEIRUT PREFERRED SHARES "I"	5.00	126.25		5.00	25.00	126.25	USD	-	-	25.25	-	-	-	25.25
BANK OF BEIRUT PREFERRED SHARES "J"	3.00	75.90		3.00	25.00	75.90	USD	-	-	25.30	-	-	-	25.30
BANK OF BEIRUT PREFERRED SHARES "K"	4.00	101.00		4.00	25.00	101.00	USD	-	-	25.25	-	-	-	25.25
BYBLOS BANK	565.52	904.82	565.52			904.82	USD	-	-	1.60	-	-	-	1.60
BYBLOS BANK GDR	1.31	104.73				104.73	USD	-	-	80.00	-	-	-	80.00
BYBLOS BANK PREFERRED SHARES 2008	2.00	203.00		2.00	100.00	203.00	USD	-	-	101.50	-	-	-	101.50
BYBLOS BANK PREFERRED SHARES 2009	2.00	204.00		2.00	96.00	204.00	USD	-	-	102.00	-	-	-	102.00
BQ.EUROPEENNE PR.M.O	51.40	79.67	62.00			96.10	USD	-	-	1.55	-	-	-	1.55
BQ.EUROPEENNE PR.M.O PREFERRED 20	0.35	34.83		0.35	100.00	34.83	USD	-	-	99.50	-	-	-	99.50
BLOM BANK GDR	73.90	927.39				927.39	USD	11,088	139,154	12.55	12.55	12.55	12.55	12.55
BLOM BANK	215.00	2472.50	215.00			2472.50	USD	174,000	2,001,000	11.50	11.50	11.50	11.50	11.50
RASAMNY-YOUNIS MOTORS CO	10.92	35.49	27.30			88.73	USD	-	-	3.25	-	-	-	3.25
HOLCIM Liban	19.52	244.15	19.52			244.15	USD	20,000	250,200	12.51	12.51	12.51	12.51	13.50
STE DES CIMENTS BLANCS B	6.00	23.10	6.00			23.10	USD	-	-	3.85	-	-	-	3.85
STE DES CIMENTS BLANCS N	3.00	5.46	3.00			5.46	USD	-	-	1.82	-	-	-	1.82

TOTAL EXECUTED	1,728.31	11,197.12	1,666.25	11,993.86	215,188	\$2,470,804
Official USD Closing	1507.5					

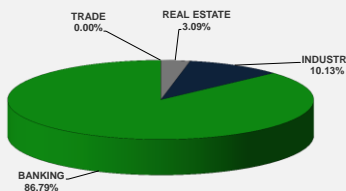
LEBANESE GLOBAL DEPOSITARY RECEIPTS	SHARES MM	BID \$	ASK \$	MID PRICE \$
BLOM BANK	73.90	12.50	12.60	12.55
BYBLOS BANK	1.31	77.00	0.00	77.00
AUDI BANK	116.24	6.00	6.08	6.04

STOCK INDEX	VALUE	PREVIOUS VALUE	% OF CHANGE
MARKET VALUE WEIGHTED INDEX	87.36	87.85	-0.56%
NUMBER OF TRANSACTIONS	20		

BEIRUT STOCK EXCHANGE DAILY TRADING VOLUME



BEIRUT STOCK EXCHANGE DAILY TRADING VALUE \$



Disclaimer: The Capital Markets Authority (CMA) publishes reports for general information purposes only. However, under no circumstances the CMA will accept any responsibility or liability in connection with the use of the information provided in these reports or on this website.

MATURITY	CURRENCY	ISSUED AMMOUNT (MM)	OUTSTANDING AMOUNT (MM)	COUPON	ISSUE P.	BID\$	ASK\$	MID. P	YIELD	SPREAD	DURATION	CONVEXITY
Lebanon / 12-10-2017	USD	775.00	775.00	5.000	100.000	100.200	100.350	100.200	2.819	1.654	0.094	0.018
Lebanon / 27-12-2017	USD	950.00	32.50	5.000	100.000	99.774	99.803	99.774	5.703	4.701	0.298	0.177
Lebanon / 31-12-2017	USD	2,007.51	100.38	4.000	100.000	99.875	100.375	99.875	4.374	3.356	0.308	0.189
Lebanon / 07-03-2018	USD	700.00	70.00	5.000	100.000	99.603	101.603	99.603	5.821	4.679	0.488	0.477
Lebanon / 27-05-2018	USD	200.00	20.00	5.000	100.000	99.736	101.736	99.736	5.561	4.229	0.457	0.493
Lebanon / 12-06-2018	USD	700.00	700.00	5.150	100.000	100.500	102.500	100.500	4.465	3.254	0.737	0.910
Lebanon / 12-11-2018	USD	1,025.00	1,025.00	5.150	100.000	100.619	101.135	100.619	4.598	3.378	1.116	1.821
Lebanon / 28-11-2018	EUR	445.00	445.00	5.350	100.000	101.750	102.750	101.750	3.842	4.604	1.133	2.424
Lebanon / 23-04-2019	USD	500.00	500.00	6.750	100.000	100.600	101.350	100.600	5.106	3.815	1.510	3.100
Lebanon / 20-05-2019	USD	650.00	650.00	6.000	100.000	101.660	102.180	101.660	4.964	3.675	1.577	3.350
Lebanon / 28-11-2019	USD	1,500.00	1,500.00	5.450	100.000	100.550	101.100	100.550	5.181	3.892	2.042	5.336
Lebanon / 09-03-2020	USD	1,200.00	1,200.00	6.375	100.000	102.070	102.650	102.070	5.479	4.085	2.224	6.371
Lebanon / 14-04-2020	USD	700.00	700.00	5.800	100.000	100.150	101.650	100.150	5.734	4.345	2.334	6.902
Lebanon / 19-06-2020	USD	600.00	600.00	6.150	100.000	100.875	101.625	100.875	5.800	4.406	2.497	7.780
Lebanon / 12-04-2021	USD	2,092.47	2,092.47	8.250	100.000	107.121	107.850	107.121	6.015	4.627	3.016	11.510
Lebanon / 27-05-2022	USD	500.00	500.00	6.250	100.000	100.000	101.000	100.000	6.247	4.594	3.970	19.230
Lebanon / 04-10-2022	USD	1,540.00	1,540.00	6.100	100.000	99.200	99.750	99.200	6.286	4.633	4.220	21.749
Lebanon / 27-01-2023	USD	1,100.00	1,100.00	6.000	100.000	98.750	99.150	98.750	6.275	4.628	4.506	24.470
Lebanon / 26-05-2023	USD	500.00	500.00	6.400	100.000	100.125	101.125	100.125	6.371	4.718	4.651	26.500
Lebanon / 22-04-2024	USD	700.00	700.00	6.650	100.000	100.740	100.880	100.740	6.509	4.610	5.169	33.290
Lebanon / 04-11-2024	USD	500.00	538.47	6.250	100.000	98.500	99.150	98.500	6.514	4.615	5.566	38.441
Lebanon / 03-12-2024	USD	250.00	250.00	7.000	100.000	102.350	102.850	102.350	6.584	4.684	5.539	38.333
Lebanon / 26-02-2025	USD	800.00	800.00	6.200	100.000	97.500	98.500	97.500	6.629	4.725	5.868	42.029
Lebanon / 12-06-2025	USD	800.00	800.00	6.250	100.000	98.125	100.125	98.125	6.560	4.663	5.977	44.270
Lebanon / 27-11-2026	USD	1,600.00	1,600.00	6.600	100.000	99.300	100.000	99.300	6.701	4.628	6.699	57.076
Lebanon / 23-03-2027	USD	1,250.00	1,250.00	6.850	100.000	100.500	100.870	100.500	6.777	4.705	6.725	58.760
Lebanon / 29-11-2027	USD	1,000.00	1,000.00	6.750	100.000	99.620	100.100	99.620	6.800	4.729	7.168	66.390
Lebanon / 03-11-2028	USD	500.00	893.20	6.650	100.000	98.275	98.600	98.275	6.872	4.801	7.580	75.463
Lebanon / 25-05-2029	USD	1,000.00	1,000.00	6.850	100.000	99.250	100.250	99.250	6.943	4.866	7.813	80.730
Lebanon / 26-02-2030	USD	1,400.00	1,400.00	6.650	100.000	97.375	98.375	97.375	6.968	4.891	8.312	90.564
Lebanon / 22-04-2031	USD	300.00	300.00	7.000	100.000	99.170	100.570	99.170	7.095	5.023	8.465	98.330
Lebanon / 23-03-2032	USD	1,000.00	1,000.00	7.000	100.000	99.410	99.750	99.410	7.065	4.992	8.739	106.808
Lebanon / 02-11-2035	USD	600.00	600.00	7.050	100.000	97.750	99.181	97.750	7.274	5.203	9.846	141.671
Lebanon / 23-03-2037	USD	750.00	750.00	7.250	100.000	99.250	99.750	99.250	7.322	5.248	10.007	150.970
TOTAL PUBLIC SECTOR EUROBONDS		30,221.043	27,018.07									

EURO CDS
Not Available

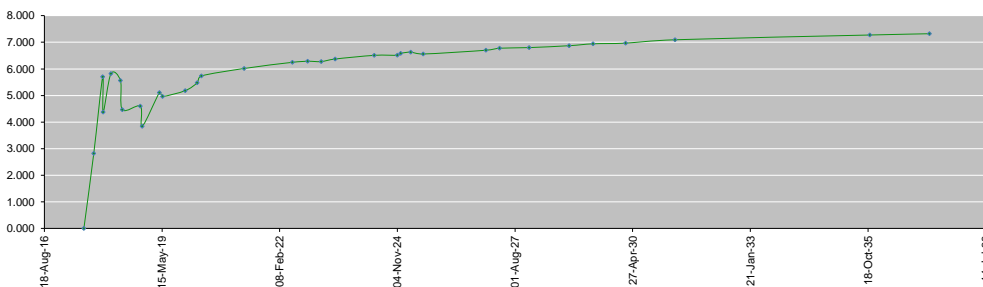
MATURITY	SIZE MM	TYPE	COUPON	Issue P.	BID \$	Ask \$	MID. P	YIELD	SPREAD	DURATION	CONVEXITY
BANK MED S.A.L/14-12-2017	USD 500	Euro CD	5.38	99.46	101.05	101.08	101.05	1.35	0.32	0.27	0.14
BANK BYBLOS S.A.L/21-06-2021	USD 300	Note	7	100	102.82	103.16	102.82	6.15	4.76	3.26	13.07

World Yields in Native Terms	O/N	3 Months	6 Months	9 Months	1 Year	2 Years	3 Years	5 Years	7 Years	10 Years	30 Years
EUR	-	-0.74	-0.79	-0.74	-0.75	-0.74	-0.69	-0.35	-0.12	0.34	1.11
U.S.A	-	1.04	1.14	--	1.22	1.29	1.39	1.65	1.90	2.07	2.69
U.K	-	0.22	0.21	--	0.16	0.18	0.20	0.42	0.66	1.01	1.68
Japan	-	-0.20	-0.16	-0.15	-0.14	-0.15	-0.14	-0.14	-0.09	0.01	0.81

Libor	USD	EUR	JPY	GBP
1 Months	1.23	-0.40	-0.04	0.25
2 Months	1.28	-0.38	-0.04	0.26
3 Months	1.32	-0.37	-0.03	0.28
6 Months	1.46	-0.31	-0.01	0.40
1 Year	1.71	-0.21	0.11	0.59

Spot Rates	Bid	Ask
Lebanese Pound	1505.50	1510.50
Euro	1.19	1.1938
British Sterling Pound	1.31	1.3055
Japanese Yen	108.84	108.8600
Gold	1339.87	1339.98

Lebanese Republic USD Eurobonds Yield Curve



Disclaimer: The Capital Markets Authority (CMA) publishes reports for general information purposes only. However, under no circumstances the CMA will accept any responsibility or liability in connection with the use of the information provided in these reports or on this website.

Contact us by email: research@cma.gov.lb