

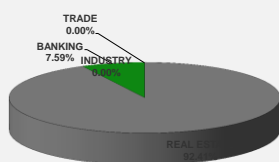
LISTED COMPANIES	LISTED SHARES	MARKET CAP.	TOTAL ORDINARY SHARES	PREFERRED SHARES	PREFERRED SHARES ISSUE PRICE	TOTAL MARKET CAP.	CUR.	TRADED VOLUME	TRADED VALUE	CLOSING PRICE	OPEN PRICE	HIGH PRICE	LOW PRICE	PREVIOUS PRICE
	(MM)	(MM \$)	(MM)	(MM)	USD	(MM \$)								
SOLIDERE A	100.00	821.00	100.00			821.00	USD	14,446	117,303	8.21	8.00	8.25	7.98	7.92
SOLIDERE B	65.00	533.00	65.00			533.00	USD	9,891	80,713	8.20	7.76	8.24	7.76	7.73
BQ.LIB. POUR LE COMMERCE	51.03	47.46	152.70			142.01	USD	-	-	0.93	-	-	-	0.93
BQ.LIB. POUR LE COMMERCE PEF. "B"	0.55	55.00		0.55		55.00	USD	-	-	100.00	-	-	-	100.00
BQ.LIB. POUR LE COMMERCE PEF. "C"	0.35	35.00		0.35		35.00	USD	-	-	100.00	-	-	-	100.00
BQ.LIB. POUR LE COMMERCE PEF. "D"	0.75	75.00		0.75		75.00	USD	-	-	100.00	-	-	-	100.00
BANQUE AUDI	399.75	2378.51	399.75			2378.51	USD	-	-	5.95	-	-	-	5.95
BANQUE AUDI GDR	116.24	705.57				705.57	USD	1,000	6,070	6.07	6.07	6.07	6.07	6.00
BANQUE AUDI PREFERRED "G"	1.50	151.80		1.50	100.00	151.80	USD	-	-	101.20	-	-	-	101.20
BANQUE AUDI PREFERRED "H"	0.75	75.90		0.75	100.00	75.90	USD	-	-	101.20	-	-	-	101.20
BANQUE AUDI PREFERRED "I"	2.50	253.00		2.50	100.00	253.00	USD	-	-	101.20	-	-	-	101.20
BANK OF BEIRUT	16.82	316.26	50.47			948.79	USD	-	-	18.80	-	-	-	18.80
BANK OF BEIRUT PRIORITY	4.76	100.00				100.00	USD	-	-	21.00	-	-	-	21.00
BANK OF BEIRUT PREFERRED SHARES "H"	5.40	136.89		5.40	25.00	136.89	USD	-	-	25.35	-	-	-	25.35
BANK OF BEIRUT PREFERRED SHARES "I"	5.00	126.75		5.00	25.00	126.75	USD	-	-	25.35	-	-	-	25.35
BANK OF BEIRUT PREFERRED SHARES "J"	3.00	75.90		3.00	25.00	75.90	USD	-	-	25.30	-	-	-	25.30
BANK OF BEIRUT PREFERRED SHARES "K"	4.00	101.00		4.00	25.00	101.00	USD	-	-	25.25	-	-	-	25.25
BYBLOS BANK	565.52	904.82	565.52			904.82	USD	-	-	1.60	-	-	-	1.60
BYBLOS BANK GDR	1.31	104.73				104.73	USD	-	-	80.00	-	-	-	80.00
BYBLOS BANK PREFERRED SHARES 2008	2.00	202.60		2.00	100.00	202.60	USD	-	-	101.30	-	-	-	101.30
BYBLOS BANK PREFERRED SHARES 2009	2.00	204.00		2.00	96.00	204.00	USD	-	-	102.00	-	-	-	102.00
BQ.EUROPEENNE PR.M.O	51.40	79.67	62.00			96.10	USD	-	-	1.55	-	-	-	1.55
BQ.EUROPEENNE PR.M.O PREFERRED 20	0.35	34.83		0.35	100.00	34.83	USD	-	-	99.50	-	-	-	99.50
BLOM BANK GDR	73.90	931.09				931.09	USD	500	6,300	12.60	12.60	12.60	12.60	12.60
BLOM BANK	215.00	2494.00	215.00			2494.00	USD	500	5,800	11.60	11.60	11.60	11.60	11.60
RASAMNY-YOUNIS MOTORS CO	10.92	35.49	27.30			88.73	USD	-	-	3.25	-	-	-	3.25
HOLCIM Liban	19.52	244.15	19.52			244.15	USD	-	-	12.51	-	-	-	12.51
STE DES CIMENTS BLANCS B	6.00	23.10	6.00			23.10	USD	-	-	3.85	-	-	-	3.85
STE DES CIMENTS BLANCS N	3.00	5.46	3.00			5.46	USD	-	-	1.82	-	-	-	1.82

TOTAL EXECUTED	1,728.31	11,251.97	1,666.25			12,048.71		26,337	\$216,186					
Official USD Closing	1507.5													

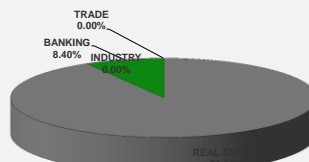
LEBANESE GLOBAL DEPOSITARY RECEIPTS	SHARES MM	BID \$	ASK \$	MID PRICE \$
BLOM BANK	73.90	12.45	12.60	12.53
BYBLOS BANK	1.31	77.00	0.00	77.00
AUDI BANK	116.24	5.92	6.07	6.00

STOCK INDEX	VALUE	PREVIOUS VALUE	% OF CHANGE
MARKET VALUE WEIGHTED INDEX	88.72	85.96	3.21%
NUMBER OF TRANSACTIONS	22		

BEIRUT STOCK EXCHANGE DAILY TRADING VOLUME



BEIRUT STOCK EXCHANGE DAILY TRADING VALUE \$



Disclaimer: The Capital Markets Authority (CMA) publishes reports for general information purposes only. However, under no circumstances the CMA will accept any responsibility or liability in connection with the use of the information provided in these reports or on this website.

MATURITY	CURRENCY	ISSUED AMMOUNT (MM)	OUTSTANDING AMOUNT (MM)	COUPON	ISSUE P.	BID\$	ASK\$	MID. P	YIELD	SPREAD	DURATION	CONVEXITY
Lebanon / 12-10-2017	USD	775.00	775.00	5.000	100.000	100.250	100.300	100.250	1.220	0.259	0.067	0.009
Lebanon / 27-12-2017	USD	950.00	32.50	5.000	100.000	99.906	99.933	99.906	5.287	4.208	0.271	0.147
Lebanon / 31-12-2017	USD	2,007.51	100.38	4.000	100.000	99.750	100.250	99.750	4.852	3.752	0.280	0.157
Lebanon / 07-03-2018	USD	700.00	70.00	5.000	100.000	99.719	101.719	99.719	5.606	4.428	0.462	0.427
Lebanon / 27-05-2018	USD	200.00	20.00	5.000	100.000	99.844	101.844	99.844	5.345	4.045	0.430	0.458
Lebanon / 12-06-2018	USD	700.00	700.00	5.150	100.000	100.500	102.500	100.500	4.440	3.281	0.710	0.860
Lebanon / 12-11-2018	USD	1,025.00	1,025.00	5.150	100.000	100.663	101.119	100.663	4.546	3.272	1.089	1.748
Lebanon / 28-11-2018	EUR	445.00	445.00	5.350	100.000	101.750	102.750	101.750	3.810	4.561	1.107	2.341
Lebanon / 23-04-2019	USD	500.00	500.00	6.750	100.000	100.875	101.375	100.875	4.920	3.574	1.484	3.010
Lebanon / 20-05-2019	USD	650.00	650.00	6.000	100.000	101.950	102.350	101.950	4.768	3.408	1.552	3.250
Lebanon / 28-11-2019	USD	1,500.00	1,500.00	5.450	100.000	100.650	101.150	100.650	5.129	3.769	2.016	5.215
Lebanon / 09-03-2020	USD	1,200.00	1,200.00	6.375	100.000	102.400	102.750	102.400	5.326	3.825	2.268	6.440
Lebanon / 14-04-2020	USD	700.00	700.00	5.800	100.000	100.450	101.000	100.450	5.608	4.115	2.306	6.758
Lebanon / 19-06-2020	USD	600.00	600.00	6.150	100.000	101.250	101.750	101.250	5.649	4.168	2.472	7.640
Lebanon / 12-04-2021	USD	2,092.47	2,092.47	8.250	100.000	107.542	107.874	107.542	5.873	4.377	2.991	11.350
Lebanon / 27-05-2022	USD	500.00	500.00	6.250	100.000	100.000	100.750	100.000	6.247	4.479	3.942	19.000
Lebanon / 04-10-2022	USD	1,540.00	1,540.00	6.100	100.000	99.650	100.200	99.650	6.181	4.393	4.197	21.544
Lebanon / 27-01-2023	USD	1,100.00	1,100.00	6.000	100.000	98.950	99.250	98.950	6.231	4.446	4.481	24.230
Lebanon / 26-05-2023	USD	500.00	500.00	6.400	100.000	100.500	101.250	100.500	6.292	4.523	4.627	26.260
Lebanon / 22-04-2024	USD	700.00	700.00	6.650	100.000	101.000	101.750	101.000	6.460	4.456	5.149	33.070
Lebanon / 04-11-2024	USD	500.00	538.47	6.250	100.000	98.550	99.080	98.550	6.506	4.481	5.539	38.127
Lebanon / 03-12-2024	USD	250.00	250.00	7.000	100.000	102.350	102.800	102.350	6.583	4.559	5.512	38.020
Lebanon / 26-02-2025	USD	800.00	800.00	6.200	100.000	98.050	98.500	98.050	6.534	4.511	5.844	41.741
Lebanon / 12-06-2025	USD	800.00	800.00	6.250	100.000	97.750	99.750	97.750	6.624	4.620	5.945	43.870
Lebanon / 27-11-2026	USD	1,600.00	1,600.00	6.600	100.000	99.300	99.950	99.300	6.701	4.495	6.672	56.698
Lebanon / 23-03-2027	USD	1,250.00	1,250.00	6.850	100.000	100.220	101.280	100.220	6.818	4.619	6.699	58.402
Lebanon / 29-11-2027	USD	1,000.00	1,000.00	6.750	100.000	99.950	100.450	99.950	6.755	4.547	7.148	66.090
Lebanon / 03-11-2028	USD	500.00	893.20	6.650	100.000	98.300	98.600	98.300	6.870	4.660	7.553	75.047
Lebanon / 25-05-2029	USD	1,000.00	1,000.00	6.850	100.000	99.250	100.000	99.250	6.943	4.752	7.783	80.250
Lebanon / 26-02-2030	USD	1,400.00	1,400.00	6.650	100.000	97.300	98.250	97.300	6.977	4.769	8.283	90.063
Lebanon / 22-04-2031	USD	300.00	300.00	7.000	100.000	99.375	100.125	99.375	7.071	4.881	8.434	97.800
Lebanon / 23-03-2032	USD	1,000.00	1,000.00	7.000	100.000	99.300	99.750	99.300	7.078	4.870	8.710	106.292
Lebanon / 02-11-2035	USD	600.00	600.00	7.050	100.000	97.900	98.960	97.900	7.259	5.050	9.817	141.095
Lebanon / 23-03-2037	USD	750.00	750.00	7.250	100.000	99.050	99.250	99.050	7.342	5.135	9.963	150.039
TOTAL PUBLIC SECTOR EUROBONDS		30,218.685	27,015.71									

EURO CDS
Not Available

LEBANESE PRIVATE SECTOR EUROBONDS

MATURITY	SIZE MM	TYPE	COUPON	Issue P.	BID \$	Ask \$	MID. P	YIELD	SPREAD	DURATION	CONVEXITY
BANK MED S.A.L/14-12-2017	USD 500	Euro CD	5.38	99.46	100.94	100.97	100.94	1.35	0.32	0.24	0.11
BANK BYBLOS S.A.L/21-06-2021	USD 300	Note	7	100	102.34	102.67	102.34	6.29	4.80	3.23	12.86

World Yields in Native Terms

	O/N	3 Months	6 Months	9 Months	1 Year	2 Years	3 Years	5 Years	7 Years	10 Years	30 Years
EUR	-	-0.74	-0.80	-0.73	-0.75	-0.71	-0.65	-0.31	-0.06	0.42	1.22
U.S.A	-	1.04	1.17	--	1.27	1.36	1.50	1.79	2.02	2.21	2.80
U.K	-	0.23	0.23	--	0.31	0.38	0.43	0.64	0.87	1.21	1.84
Japan	-	-0.10	-0.16	-0.12	-0.14	-0.14	-0.12	-0.10	-0.06	0.04	0.85

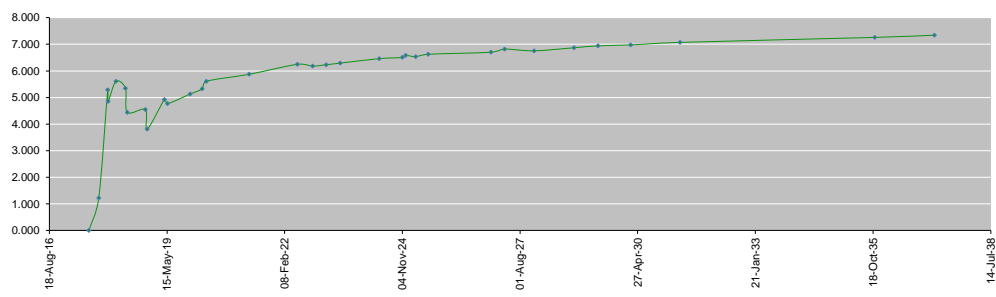
Libor

	USD	EUR	JPY	GBP
1 Months	1.23	-0.40	-0.04	0.25
2 Months	1.27	-0.39	-0.04	0.27
3 Months	1.32	-0.37	-0.03	0.30
6 Months	1.46	-0.30	0.00	0.43
1 Year	1.71	-0.22	0.10	0.63

Spot Rates

	Bid	Ask
Lebanese Pound	1505.00	1511.00
Euro	1.19	1.1885
British Sterling Pound	1.33	1.3331
Japanese Yen	110.69	110.7200
Gold	1320.06	1320.17

Lebanese Republic USD Eurobonds Yield Curve



Disclaimer: The Capital Markets Authority (CMA) publishes reports for general information purposes only. However, under no circumstances the CMA will accept any responsibility or liability in connection with the use of the information provided in these reports or on this website.

Contact us by email: research@cma.gov.lb