

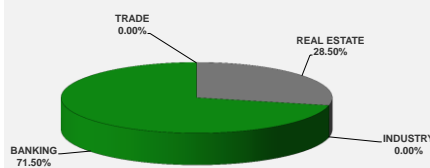
LISTED COMPANIES	LISTED SHARES	MARKET CAP.	TOTAL ORDINARY SHARES	PREFERRED SHARES	PREFERRED SHARES ISSUE PRICE	TOTAL MARKET CAP.	CUR.	TRADED VOLUME	TRADED VALUE	CLOSING PRICE	OPEN PRICE	HIGH PRICE	LOW PRICE	PREVIOUS PRICE
	(MM)	(MM \$)	(MM)	(MM)	USD	(MM \$)								
SOLIDERE A	100.00	792.00	100.00			792.00	USD	11,731	93,290	7.92	8.01	8.01	7.92	8.01
SOLIDERE B	65.00	514.80	65.00			514.80	USD	700	5,544	7.92	7.92	7.92	7.92	7.77
BQ.LIB. POUR LE COMMERCE	51.03	47.46	152.70			142.01	USD	-	-	0.93	-	-	-	0.93
BQ.LIB. POUR LE COMMERCE PEF. "B"	0.55	55.00		0.55		55.00	USD	-	-	100.00	-	-	-	100.00
BQ.LIB. POUR LE COMMERCE PEF. "C"	0.35	35.00		0.35		35.00	USD	-	-	100.00	-	-	-	100.00
BQ.LIB. POUR LE COMMERCE PEF. "D"	0.75	75.00		0.75		75.00	USD	-	-	100.00	-	-	-	100.00
BANQUE AUDI	399.75	2318.55	399.75			2318.55	USD	15,110	87,663	5.80	5.94	5.94	5.80	5.95
BANQUE AUDI GDR	116.24	697.43				697.43	USD	2,236	13,416	6.00	6.00	6.00	6.00	6.00
BANQUE AUDI PREFERRED "G"	1.50	150.75		1.50	100.00	150.75	USD	-	-	100.50	-	-	-	100.50
BANQUE AUDI PREFERRED "H"	0.75	75.90		0.75	100.00	75.90	USD	-	-	101.20	-	-	-	101.20
BANQUE AUDI PREFERRED "I"	2.50	253.00		2.50	100.00	253.00	USD	-	-	101.20	-	-	-	101.20
BANK OF BEIRUT	16.82	316.26	50.47			948.79	USD	-	-	18.80	-	-	-	18.80
BANK OF BEIRUT PRIORITY	4.76	100.00				100.00	USD	-	-	21.00	-	-	-	21.00
BANK OF BEIRUT PREFERRED SHARES "H"	5.40	136.89		5.40	25.00	136.89	USD	-	-	25.35	-	-	-	25.35
BANK OF BEIRUT PREFERRED SHARES "I"	5.00	126.75		5.00	25.00	126.75	USD	-	-	25.35	-	-	-	25.35
BANK OF BEIRUT PREFERRED SHARES "J"	3.00	75.90		3.00	25.00	75.90	USD	-	-	25.30	-	-	-	25.30
BANK OF BEIRUT PREFERRED SHARES "K"	4.00	101.00		4.00	25.00	101.00	USD	-	-	25.25	-	-	-	25.25
BYBLOS BANK	565.52	904.82	565.52			904.82	USD	-	-	1.60	-	-	-	1.60
BYBLOS BANK GDR	1.31	104.73				104.73	USD	-	-	80.00	-	-	-	80.00
BYBLOS BANK PREFERRED SHARES 2008	2.00	204.00		2.00	100.00	204.00	USD	-	-	102.00	-	-	-	102.00
BYBLOS BANK PREFERRED SHARES 2009	2.00	204.00		2.00	96.00	204.00	USD	-	-	102.00	-	-	-	102.00
BQ.EUROPEENNE PR.M.O	51.40	79.67	62.00			96.10	USD	-	-	1.55	-	-	-	1.55
BQ.EUROPEENNE PR.M.O PREFERRED 20	0.35	34.83		0.35	100.00	34.83	USD	-	-	99.50	-	-	-	99.50
BLOM BANK GDR	73.90	934.78				934.78	USD	6,585	83,300	12.65	12.65	12.65	12.65	12.70
BLOM BANK	215.00	2494.00	215.00			2494.00	USD	7,250	84,100	11.60	11.60	11.60	11.60	11.60
RASAMNY-YOUNIS MOTORS CO	10.92	35.49	27.30			88.73	USD	-	-	3.25	-	-	-	3.25
HOLCIM Liban	19.52	244.15	19.52			244.15	USD	-	-	12.51	-	-	-	12.51
STE DES CIMENTS BLANCS B	6.00	23.10	6.00			23.10	USD	-	-	3.85	-	-	-	3.85
STE DES CIMENTS BLANCS N	3.00	5.46	3.00			5.46	USD	-	-	1.82	-	-	-	1.82

TOTAL EXECUTED	1,728.31	11,140.71	1,666.25	11,937.45	43,612	\$367,313
Official USD Closing	1507.5					

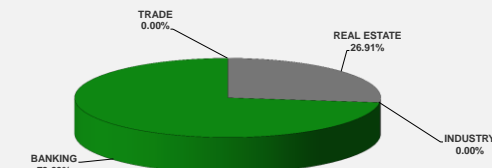
LEBANESE GLOBAL DEPOSITARY RECEIPTS	SHARES MM	BID \$	ASK \$	MID PRICE \$
BLOM BANK	73.90	12.60	12.65	12.63
BYBLOS BANK	1.31	77.00	0.00	77.00
AUDI BANK	116.24	6.00	6.07	6.04

STOCK INDEX	VALUE	PREVIOUS VALUE	% OF CHANGE
MARKET VALUE WEIGHTED INDEX	86.36	86.56	-0.23%
NUMBER OF TRANSACTIONS	24		

BEIRUT STOCK EXCHANGE DAILY TRADING VOLUME



BEIRUT STOCK EXCHANGE DAILY TRADING VALUE \$



Disclaimer: The Capital Markets Authority (CMA) publishes reports for general information purposes only. However, under no circumstances the CMA will accept any responsibility or liability in connection with the use of the information provided in these reports or on this website.

MATURITY	CURRENCY	ISSUED AMMOUNT (MM)	OUTSTANDING AMOUNT (MM)	COUPON	ISSUE P.	BID\$	ASK\$	MID. P	YIELD	SPREAD	DURATION	CONVEXITY
Lebanon / 12-10-2017	USD	775.00	775.00	5.000	100.000	100.200	100.210	100.200	1.687	0.744	0.061	0.008
Lebanon / 27-12-2017	USD	950.00	32.50	5.000	100.000	99.910	99.936	99.910	5.278	4.198	0.266	0.141
Lebanon / 31-12-2017	USD	2,007.51	100.38	4.000	100.000	99.750	100.250	99.750	4.869	3.843	0.275	0.151
Lebanon / 07-03-2018	USD	700.00	70.00	5.000	100.000	99.725	101.725	99.725	5.598	4.420	0.457	0.417
Lebanon / 27-05-2018	USD	200.00	20.00	5.000	100.000	99.849	101.849	99.849	5.338	4.039	0.425	0.450
Lebanon / 12-06-2018	USD	700.00	700.00	5.150	100.000	100.625	102.625	100.625	4.259	3.082	0.705	0.850
Lebanon / 12-11-2018	USD	1,025.00	1,025.00	5.150	100.000	100.800	100.950	100.800	4.420	3.117	1.084	1.733
Lebanon / 28-11-2018	EUR	445.00	445.00	5.350	100.000	102.000	103.000	102.000	3.589	4.318	1.104	2.334
Lebanon / 23-04-2019	USD	500.00	500.00	6.750	100.000	100.750	101.750	100.750	5.001	3.613	1.479	2.990
Lebanon / 20-05-2019	USD	650.00	650.00	6.000	100.000	101.500	102.500	101.500	5.045	3.655	1.546	3.230
Lebanon / 28-11-2019	USD	1,500.00	1,500.00	5.450	100.000	100.850	101.175	100.850	5.031	3.642	2.011	5.194
Lebanon / 09-03-2020	USD	1,200.00	1,200.00	6.375	100.000	102.395	102.950	102.395	5.326	3.790	2.263	6.416
Lebanon / 14-04-2020	USD	700.00	700.00	5.800	100.000	100.600	101.200	100.600	5.544	4.011	2.302	6.736
Lebanon / 19-06-2020	USD	600.00	600.00	6.150	100.000	101.000	102.000	101.000	5.747	4.214	2.466	7.610
Lebanon / 12-04-2021	USD	2,092.47	2,092.47	8.250	100.000	107.850	109.050	107.850	5.778	4.243	2.991	11.350
Lebanon / 27-05-2022	USD	500.00	500.00	6.250	100.000	100.250	101.250	100.250	6.185	4.370	3.940	18.980
Lebanon / 04-10-2022	USD	1,540.00	1,540.00	6.100	100.000	100.050	100.940	100.050	6.087	4.273	4.197	21.539
Lebanon / 27-01-2023	USD	1,100.00	1,100.00	6.000	100.000	99.000	100.000	99.000	6.220	4.406	4.479	24.210
Lebanon / 26-05-2023	USD	500.00	500.00	6.400	100.000	100.500	101.500	100.500	6.292	4.476	4.622	26.220
Lebanon / 22-04-2024	USD	700.00	700.00	6.650	100.000	101.000	102.000	101.000	6.460	4.414	5.146	33.020
Lebanon / 04-11-2024	USD	500.00	538.47	6.250	100.000	98.750	99.330	98.750	6.470	4.423	5.536	38.096
Lebanon / 03-12-2024	USD	250.00	250.00	7.000	100.000	102.875	103.875	102.875	6.492	4.445	5.517	38.070
Lebanon / 26-02-2025	USD	800.00	800.00	6.200	100.000	98.000	99.000	98.000	6.543	4.497	5.842	41.708
Lebanon / 12-06-2025	USD	800.00	800.00	6.250	100.000	98.000	100.000	98.000	6.582	4.551	5.943	43.850
Lebanon / 27-11-2026	USD	1,600.00	1,600.00	6.600	100.000	99.500	100.750	99.500	6.672	4.459	6.675	56.737
Lebanon / 23-03-2027	USD	1,250.00	1,250.00	6.850	100.000	100.875	101.875	100.875	6.724	4.509	6.706	58.481
Lebanon / 29-11-2027	USD	1,000.00	1,000.00	6.750	100.000	100.150	100.300	100.150	6.728	4.516	7.143	66.020
Lebanon / 03-11-2028	USD	500.00	893.20	6.650	100.000	98.250	99.250	98.250	6.876	4.662	7.555	75.065
Lebanon / 25-05-2029	USD	1,000.00	1,000.00	6.850	100.000	99.500	100.500	99.500	6.911	4.698	7.787	80.300
Lebanon / 26-02-2030	USD	1,400.00	1,400.00	6.650	100.000	97.750	98.750	97.750	6.922	4.709	8.290	90.171
Lebanon / 22-04-2031	USD	300.00	300.00	7.000	100.000	99.500	100.500	99.500	7.057	4.843	8.437	97.840
Lebanon / 23-03-2032	USD	1,000.00	1,000.00	7.000	100.000	99.250	100.250	99.250	7.083	4.869	8.713	106.329
Lebanon / 02-11-2035	USD	600.00	600.00	7.050	100.000	98.500	100.000	98.500	7.198	4.987	9.848	141.753
Lebanon / 23-03-2037	USD	750.00	750.00	7.250	100.000	99.350	99.500	99.350	7.313	5.100	9.971	150.226
TOTAL PUBLIC SECTOR EUROBONDS		30,222.022	27,019.05									

EURO CDS

Not Available

LEBANESE PRIVATE SECTOR EUROBONDS

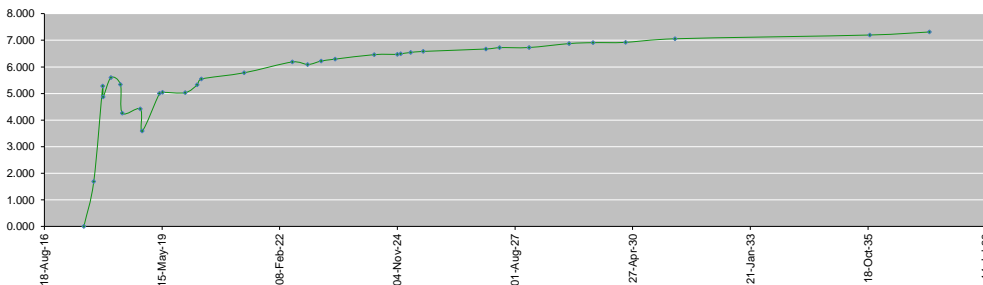
MATURITY	SIZE MM	TYPE	COUPON	Issue P.	BID \$	Ask \$	MID. P	YIELD	SPREAD	DURATION	CONVEXITY
BANK MED S.A.L/14-12-2017	USD 500	Euro CD	5.38	99.46	100.92	100.94	100.92	1.36	0.32	0.23	0.11
BANK BYBLOS S.A.L/21-06-2021	USD 300	Note	7	100	102.24	102.58	102.24	6.32	4.78	3.22	12.82

World Yields in Native Terms	O/N	3 Months	6 Months	9 Months	1 Year	2 Years	3 Years	5 Years	7 Years	10 Years	30 Years
EUR	-	-0.74	-0.81	-0.71	-0.73	-0.69	-0.63	-0.27	-0.03	0.44	1.24
U.S.A	-	1.04	1.18	--	1.30	1.39	1.54	1.81	2.04	2.21	2.77
U.K	-	0.23	0.24	--	0.38	0.43	0.50	0.73	0.97	1.30	1.90
Japan	-	-0.12	-0.13	-0.15	-0.14	-0.14	-0.14	-0.12	-0.08	0.02	0.83

Libor	USD	EUR	JPY	GBP
1 Months	1.24	-0.40	-0.05	0.25
2 Months	1.27	-0.39	-0.04	0.28
3 Months	1.32	-0.38	-0.03	0.33
6 Months	1.47	-0.30	0.00	0.47
1 Year	1.73	-0.22	0.10	0.70

Spot Rates	Bid	Ask
Lebanese Pound	1505.50	1510.50
Euro	1.20	1.1958
British Sterling Pound	1.35	1.3538
Japanese Yen	111.34	111.3600
Gold	1312.43	1312.54

Lebanese Republic USD Eurobonds Yield Curve



Disclaimer: The Capital Markets Authority (CMA) publishes reports for general information purposes only. However, under no circumstances the CMA will accept any responsibility or liability in connection with the use of the information provided in these reports or on this website.

Contact us by email: research@cma.gov.lb