

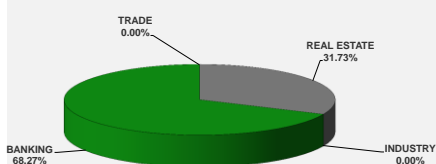
LISTED COMPANIES	LISTED SHARES	MARKET CAP.	TOTAL ORDINARY SHARES	PREFERRED SHARES	PREFERRED SHARES ISSUE PRICE	TOTAL MARKET CAP.	CUR.	TRADED VOLUME	TRADED VALUE	CLOSING PRICE	OPEN PRICE	HIGH PRICE	LOW PRICE	PREVIOUS PRICE
	(MM)	(MM \$)	(MM)	(MM)	USD	(MM \$)								
SOLIDERE A	100.00	814.00	100.00			814.00	USD	2,480	20,106	8.14	7.94	8.20	7.94	8.00
SOLIDERE B	65.00	531.05	65.00			531.05	USD	4,992	40,541	8.17	7.85	8.20	7.85	8.16
BQ.LIB. POUR LE COMMERCE	51.03	47.46	152.70			142.01	USD	-	-	0.93	-	-	-	0.93
BQ.LIB. POUR LE COMMERCE PEF. "B"	0.55	55.00		0.55		55.00	USD	-	-	100.00	-	-	-	100.00
BQ.LIB. POUR LE COMMERCE PEF. "C"	0.35	35.70		0.35		35.70	USD	-	-	102.00	-	-	-	102.00
BQ.LIB. POUR LE COMMERCE PEF. "D"	0.75	75.00		0.75		75.00	USD	-	-	100.00	-	-	-	100.00
BANQUE AUDI	399.75	2358.52	399.75			2358.52	USD	-	-	5.90	-	-	-	5.90
BANQUE AUDI GDR	116.24	685.80				685.80	USD	-	-	5.90	-	-	-	5.90
BANQUE AUDI PREFERRED "G"	1.50	151.50		1.50	100.00	151.50	USD	-	-	101.00	-	-	-	101.00
BANQUE AUDI PREFERRED "H"	0.75	75.90		0.75	100.00	75.90	USD	-	-	101.20	-	-	-	101.20
BANQUE AUDI PREFERRED "I"	2.50	252.50		2.50	100.00	252.50	USD	-	-	101.00	-	-	-	101.00
BANK OF BEIRUT	16.82	316.26	50.47			948.79	USD	-	-	18.80	-	-	-	18.80
BANK OF BEIRUT PRIORITY	4.76	100.00				100.00	USD	-	-	21.00	-	-	-	21.00
BANK OF BEIRUT PREFERRED SHARES "H"	5.40	136.89		5.40	25.00	136.89	USD	-	-	25.35	-	-	-	25.35
BANK OF BEIRUT PREFERRED SHARES "I"	5.00	126.75		5.00	25.00	126.75	USD	-	-	25.35	-	-	-	25.35
BANK OF BEIRUT PREFERRED SHARES "J"	3.00	76.05		3.00	25.00	76.05	USD	-	-	25.35	-	-	-	25.35
BANK OF BEIRUT PREFERRED SHARES "K"	4.00	101.40		4.00	25.00	101.40	USD	-	-	25.35	-	-	-	25.35
BYBLOS BANK	565.52	910.48	565.52			910.48	USD	-	-	1.61	-	-	-	1.61
BYBLOS BANK GDR	1.31	104.73				104.73	USD	-	-	80.00	-	-	-	80.00
BYBLOS BANK PREFERRED SHARES 2008	2.00	204.00		2.00	100.00	204.00	USD	487	49,674	102.00	102.00	102.00	102.00	102.00
BYBLOS BANK PREFERRED SHARES 2009	2.00	204.20		2.00	96.00	204.20	USD	80	8,168	102.10	102.10	102.10	102.10	102.20
BQ.EUROPEENNE PR.M.O	51.40	79.67	62.00			96.10	USD	-	-	1.55	-	-	-	1.55
BQ.EUROPEENNE PR.M.O PREFERRED 20	0.35	34.83		0.35	100.00	34.83	USD	-	-	99.50	-	-	-	99.50
BLOM BANK GDR	73.90	931.09				931.09	USD	10,950	137,970	12.60	12.60	12.60	12.60	12.75
BLOM BANK	215.00	2494.00	215.00			2494.00	USD	4,560	52,896	11.60	11.60	11.60	11.60	11.50
RASAMNY-YOUNIS MOTORS CO	10.92	35.49	27.30			88.73	USD	-	-	3.25	-	-	-	3.25
HOLCIM Liban	19.52	253.90	19.52			253.90	USD	-	-	13.01	-	-	-	13.01
STE DES CIMENTS BLANCS B	6.00	23.10	6.00			23.10	USD	-	-	3.85	-	-	-	3.85
STE DES CIMENTS BLANCS N	3.00	5.46	3.00			5.46	USD	-	-	1.82	-	-	-	1.82

TOTAL EXECUTED	1,728.31	11,220.73	1,666.25	12,017.47	23,549	\$309,355
Official USD Closing	1507.5					

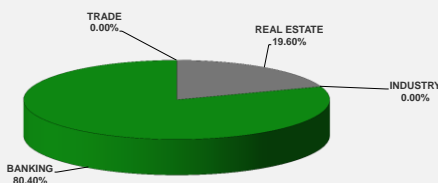
LEBANESE GLOBAL DEPOSITARY RECEIPTS	SHARES MM	BID \$	ASK \$	MID PRICE \$
BLOM BANK	73.90	12.60	12.70	12.65
BYBLOS BANK	1.31	75.00	0.00	75.00
AUDI BANK	116.24	5.95	6.08	6.02

STOCK INDEX	VALUE	PREVIOUS VALUE	% OF CHANGE
MARKET VALUE WEIGHTED INDEX	88.27	87.55	0.83%
NUMBER OF TRANSACTIONS	22		

BEIRUT STOCK EXCHANGE DAILY TRADING VOLUME



BEIRUT STOCK EXCHANGE DAILY TRADING VALUE \$



Disclaimer: The Capital Markets Authority (CMA) publishes reports for general information purposes only. However, under no circumstances the CMA will accept any responsibility or liability in connection with the use of the information provided in these reports or on this website.

MATURITY	CURRENCY	ISSUED AMMOUNT (MM)	OUTSTANDING AMOUNT (MM)	COUPON	ISSUE P.	BID\$	ASK\$	MID. P	YIELD	SPREAD	DURATION	CONVEXITY
Lebanon / 12-10-2017	USD	775.00	775.00	5.000	100.000	100.030	100.100	100.030	3.375	2.485	0.019	0.001
Lebanon / 27-12-2017	USD	950.00	32.50	5.000	100.000	99.927	99.949	99.927	5.253	4.219	0.225	0.101
Lebanon / 31-12-2017	USD	2,007.51	100.38	4.000	100.000	99.875	100.375	99.875	4.488	3.420	0.234	0.110
Lebanon / 07-03-2018	USD	700.00	35.00	5.000	100.000	99.756	101.756	99.756	5.570	4.353	0.417	0.347
Lebanon / 27-05-2018	USD	200.00	20.00	5.000	100.000	99.874	101.874	99.874	5.311	3.972	0.384	0.398
Lebanon / 12-06-2018	USD	700.00	700.00	5.150	100.000	100.375	102.375	100.375	4.578	3.360	0.663	0.770
Lebanon / 12-11-2018	USD	1,025.00	1,025.00	5.150	100.000	100.590	100.610	100.590	4.591	3.290	1.042	1.623
Lebanon / 28-11-2018	EUR	445.00	445.00	5.350	100.000	102.000	103.000	102.000	3.531	4.238	1.065	2.213
Lebanon / 23-04-2019	USD	500.00	500.00	6.750	100.000	100.625	101.125	100.625	5.074	3.589	1.436	2.850
Lebanon / 20-05-2019	USD	650.00	650.00	6.000	100.000	101.410	102.340	101.410	5.080	3.597	1.504	3.090
Lebanon / 28-11-2019	USD	1,500.00	1,500.00	5.450	100.000	100.375	100.875	100.375	5.259	3.774	1.968	5.002
Lebanon / 09-03-2020	USD	1,200.00	1,200.00	6.375	100.000	102.250	102.750	102.250	5.372	3.884	2.222	6.210
Lebanon / 14-04-2020	USD	700.00	700.00	5.800	100.000	100.500	101.000	100.500	5.584	3.954	2.261	6.527
Lebanon / 19-06-2020	USD	600.00	600.00	6.150	100.000	101.250	101.750	101.250	5.641	4.012	2.426	7.390
Lebanon / 12-04-2021	USD	2,092.47	2,092.47	8.250	100.000	107.772	108.101	107.772	5.777	4.147	2.947	11.070
Lebanon / 27-05-2022	USD	500.00	500.00	6.250	100.000	100.250	100.875	100.250	6.185	4.243	3.898	18.630
Lebanon / 04-10-2022	USD	1,540.00	1,540.00	6.100	100.000	100.050	100.940	100.050	6.088	4.150	4.157	21.182
Lebanon / 27-01-2023	USD	1,100.00	1,100.00	6.000	100.000	98.780	98.850	98.780	6.271	4.335	4.432	23.780
Lebanon / 26-05-2023	USD	500.00	500.00	6.400	100.000	100.125	100.750	100.125	6.371	4.429	4.576	25.770
Lebanon / 22-04-2024	USD	700.00	700.00	6.650	100.000	99.420	100.820	99.420	6.760	4.585	5.088	32.420
Lebanon / 04-11-2024	USD	500.00	538.47	6.250	100.000	98.250	99.000	98.250	6.562	4.378	5.490	37.573
Lebanon / 03-12-2024	USD	250.00	250.00	7.000	100.000	101.900	102.300	101.900	6.660	4.481	5.460	37.432
Lebanon / 26-02-2025	USD	800.00	800.00	6.200	100.000	97.125	97.875	97.125	6.698	4.515	5.788	41.071
Lebanon / 12-06-2025	USD	800.00	800.00	6.250	100.000	97.250	99.250	97.250	6.712	4.524	5.892	43.230
Lebanon / 27-11-2026	USD	1,600.00	1,600.00	6.600	100.000	98.375	99.125	98.375	6.840	4.486	6.610	55.869
Lebanon / 23-03-2027	USD	1,250.00	1,250.00	6.850	100.000	99.130	99.140	99.130	6.977	4.627	6.852	59.355
Lebanon / 29-11-2027	USD	1,000.00	1,000.00	6.750	100.000	98.940	98.950	98.940	6.895	4.546	7.076	65.070
Lebanon / 03-11-2028	USD	500.00	893.20	6.650	100.000	97.250	98.000	97.250	7.010	4.656	7.488	74.054
Lebanon / 25-05-2029	USD	1,000.00	1,000.00	6.850	100.000	98.500	99.500	98.500	7.039	4.686	7.722	79.280
Lebanon / 26-02-2030	USD	1,400.00	1,400.00	6.650	100.000	96.750	97.750	96.750	7.046	4.693	8.223	89.065
Lebanon / 22-04-2031	USD	300.00	300.00	7.000	100.000	98.050	99.450	98.050	7.227	4.880	8.357	96.500
Lebanon / 23-03-2032	USD	1,000.00	1,000.00	7.000	100.000	97.780	97.970	97.780	7.250	4.900	8.917	108.233
Lebanon / 02-11-2035	USD	600.00	600.00	7.050	100.000	97.220	97.230	97.220	7.329	4.975	9.716	139.039
Lebanon / 23-03-2037	USD	750.00	750.00	7.250	100.000	97.530	97.600	97.530	7.493	5.143	10.204	152.859
TOTAL PUBLIC SECTOR EUROBONDS		30,212.633	26,974.66									

EURO CDS

Not Available

LEBANESE PRIVATE SECTOR EUROBONDS

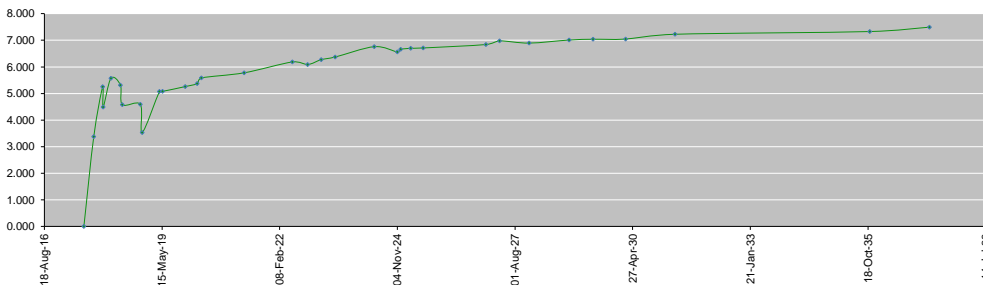
MATURITY	SIZE MM	TYPE	COUPON	Issue P.	BID \$	Ask \$	MID. P	YIELD	SPREAD	DURATION	CONVEXITY
BANK MED S.A.L/14-12-2017	USD 500	Euro CD	5.38	99.46	100.77	100.79	100.77	1.27	0.22	0.19	0.07
BANK BYBLOS S.A.L/21-06-2021	USD 300	Note	7	100	101.82	102.15	101.82	6.44	4.81	3.18	12.52

World Yields in Native Terms	O/N	3 Months	6 Months	9 Months	1 Year	2 Years	3 Years	5 Years	7 Years	10 Years	30 Years
EUR	-	-0.76	-0.78	-0.73	-0.73	-0.69	-0.63	-0.26	0.00	0.48	1.27
U.S.A	-	1.06	1.22	--	1.29	1.49	1.63	1.94	2.18	2.35	2.89
U.K	-	0.22	0.34	--	0.43	0.46	0.55	0.80	1.03	1.37	1.92
Japan	-	-0.12	-0.11	-0.09	-0.13	-0.11	-0.09	-0.07	-0.01	0.07	0.88

Libor	USD	EUR	JPY	GBP
1 Months	1.23	-0.40	-0.05	0.25
2 Months	1.27	-0.39	-0.04	0.30
3 Months	1.34	-0.38	-0.05	0.34
6 Months	1.51	-0.31	-0.01	0.49
1 Year	1.79	-0.22	0.10	0.73

Spot Rates	Bid	Ask
Lebanese Pound	1505.49	1513.30
Euro	1.17	1.1748
British Sterling Pound	1.32	1.3234
Japanese Yen	113.00	113.0300
Gold	1270.51	1270.65

Lebanese Republic USD Eurobonds Yield Curve



Disclaimer: The Capital Markets Authority (CMA) publishes reports for general information purposes only. However, under no circumstances the CMA will accept any responsibility or liability in connection with the use of the information provided in these reports or on this website.

Contact us by email: research@cma.gov.lb