

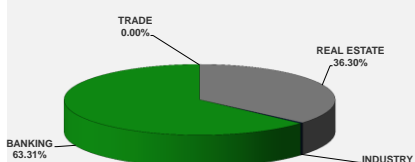
LISTED COMPANIES	LISTED SHARES	MARKET CAP.	TOTAL ORDINARY SHARES	PREFERRED SHARES	PREFERRED SHARES ISSUE PRICE	TOTAL MARKET CAP.	CUR.	TRADED VOLUME	TRADED VALUE	CLOSING PRICE	OPEN PRICE	HIGH PRICE	LOW PRICE	PREVIOUS PRICE
	(MM)	(MM \$)	(MM)	(MM)	USD	(MM \$)								
SOLIDERE A	100.00	800.00	100.00			800.00	USD	15,333	122,296	8.00	7.90	8.00	7.87	8.01
SOLIDERE B	65.00	508.95	65.00			508.95	USD	170	1,331	7.83	7.83	7.83	7.83	8.00
BQ.LIB. POUR LE COMMERCE	51.03	47.46	152.70			142.01	USD	-	-	0.93	-	-	-	0.93
BQ.LIB. POUR LE COMMERCE PEF. "B"	0.55	55.00		0.55		55.00	USD	-	-	100.00	-	-	-	100.00
BQ.LIB. POUR LE COMMERCE PEF. "C"	0.35	35.00		0.35		35.00	USD	-	-	100.00	-	-	-	100.00
BQ.LIB. POUR LE COMMERCE PEF. "D"	0.75	75.00		0.75		75.00	USD	-	-	100.00	-	-	-	100.00
BANQUE AUDI	399.75	2338.53	399.75			2338.53	USD	9,440	55,224	5.85	5.85	5.85	5.85	5.90
BANQUE AUDI GDR	116.24	691.62				691.62	USD	-	-	5.95	-	-	-	5.95
BANQUE AUDI PREFERRED "G"	1.50	152.25		1.50	100.00	152.25	USD	-	-	101.50	-	-	-	101.50
BANQUE AUDI PREFERRED "H"	0.75	75.90		0.75	100.00	75.90	USD	-	-	101.20	-	-	-	101.20
BANQUE AUDI PREFERRED "I"	2.50	255.00		2.50	100.00	255.00	USD	2,000	204,000	102.00	102.00	102.00	102.00	101.10
BANK OF BEIRUT	16.82	316.26	50.47			948.79	USD	-	-	18.80	-	-	-	18.80
BANK OF BEIRUT PRIORITY	4.76	100.00				100.00	USD	-	-	21.00	-	-	-	21.00
BANK OF BEIRUT PREFERRED SHARES "H"	5.40	136.89		5.40	25.00	136.89	USD	-	-	25.35	-	-	-	25.35
BANK OF BEIRUT PREFERRED SHARES "I"	5.00	127.50		5.00	25.00	127.50	USD	15,000	382,500	25.50	25.50	25.50	25.50	25.35
BANK OF BEIRUT PREFERRED SHARES "J"	3.00	76.05		3.00	25.00	76.05	USD	-	-	25.35	-	-	-	25.35
BANK OF BEIRUT PREFERRED SHARES "K"	4.00	101.40		4.00	25.00	101.40	USD	-	-	25.35	-	-	-	25.35
BYBLOS BANK	565.52	921.79	565.52			921.79	USD	-	-	1.63	-	-	-	1.63
BYBLOS BANK GDR	1.31	104.73				104.73	USD	-	-	80.00	-	-	-	80.00
BYBLOS BANK PREFERRED SHARES 2008	2.00	204.00		2.00	100.00	204.00	USD	-	-	102.00	-	-	-	102.00
BYBLOS BANK PREFERRED SHARES 2009	2.00	204.00		2.00	96.00	204.00	USD	-	-	102.00	-	-	-	102.00
BQ.EUROPEENNE PR.M.O	51.40	66.82	62.00			80.60	USD	-	-	1.30	-	-	-	1.30
BQ.EUROPEENNE PR.M.O PREFERRED 20	0.35	35.00		0.35	100.00	35.00	USD	-	-	100.00	-	-	-	100.00
BLOM BANK GDR	73.90	923.70				923.70	USD	600	7,500	12.50	12.50	12.50	12.50	12.50
BLOM BANK	215.00	2494.00	215.00			2494.00	USD	-	-	11.60	-	-	-	11.60
RASAMNY-YOUNIS MOTORS CO	10.92	35.49	27.30			88.73	USD	-	-	3.25	-	-	-	3.25
HOLCIM Liban	19.52	257.61	19.52			257.61	USD	167	2,204	13.20	13.20	13.20	13.20	13.50
STE DES CIMENTS BLANCS B	6.00	21.00	6.00			21.00	USD	-	-	3.50	-	-	-	3.50
STE DES CIMENTS BLANCS N	3.00	5.46	3.00			5.46	USD	-	-	1.82	-	-	-	1.82

TOTAL EXECUTED	1,728.31	11,166.41	1,666.25	11,960.50	42,710	\$775,055
Official USD Closing	1507.5					

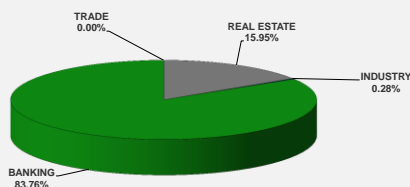
LEBANESE GLOBAL DEPOSITARY RECEIPTS	SHARES MM	BID \$	ASK \$	MID PRICE \$
BLOM BANK	73.90	12.45	12.55	12.50
BYBLOS BANK	1.31	77.00	0.00	77.00
AUDI BANK	116.24	5.86	5.99	5.93

STOCK INDEX	VALUE	PREVIOUS VALUE	% OF CHANGE
MARKET VALUE WEIGHTED INDEX	86.67	87.15	-0.55%
NUMBER OF TRANSACTIONS	26		

BEIRUT STOCK EXCHANGE DAILY TRADING VOLUME



BEIRUT STOCK EXCHANGE DAILY TRADING VALUE \$



Disclaimer: The Capital Markets Authority (CMA) publishes reports for general information purposes only. However, under no circumstances the CMA will accept any responsibility or liability in connection with the use of the information provided in these reports or on this website.

MATURITY	CURRENCY	ISSUED AMOUNT (MM)	OUTSTANDING AMOUNT (MM)	COUPON	ISSUE P.	BIDS	ASKS	MID. P	YIELD	SPREAD	DURATION	CONVEXITY
Lebanon / 27-12-2017	USD	950.00	32.50	5.000	100.000	99.935	99.952	99.935	5.294	4.189	0.171	0.058
Lebanon / 31-12-2017	USD	2,007.51	100.38	4.000	100.000	99.875	100.250	99.875	4.639	3.492	0.179	0.064
Lebanon / 07-03-2018	USD	700.00	35.00	5.000	100.000	99.767	101.767	99.767	5.611	4.332	0.363	0.263
Lebanon / 27-05-2018	USD	200.00	20.00	5.000	100.000	99.880	101.880	99.880	5.349	3.918	0.331	0.334
Lebanon / 12-06-2018	USD	700.00	700.00	5.150	100.000	100.375	102.375	100.375	4.531	3.225	0.609	0.680
Lebanon / 12-11-2018	USD	1,025.00	1,025.00	5.150	100.000	100.670	100.830	100.670	4.485	3.060	0.988	1.489
Lebanon / 28-11-2018	EUR	445.00	445.00	5.350	100.000	102.000	103.000	102.000	3.447	4.197	1.013	2.055
Lebanon / 23-04-2019	USD	500.00	500.00	6.750	100.000	100.625	101.125	100.625	5.060	3.483	1.420	2.740
Lebanon / 20-05-2019	USD	650.00	650.00	6.000	100.000	101.375	101.875	101.375	5.075	3.494	1.449	2.900
Lebanon / 28-11-2019	USD	1,500.00	1,500.00	5.450	100.000	100.500	100.950	100.500	5.192	3.613	1.914	4.768
Lebanon / 09-03-2020	USD	1,200.00	1,200.00	6.375	100.000	102.160	102.700	102.160	5.389	3.811	2.168	5.946
Lebanon / 14-04-2020	USD	700.00	700.00	5.800	100.000	100.450	100.950	100.450	5.601	3.886	2.271	6.439
Lebanon / 19-06-2020	USD	600.00	600.00	6.150	100.000	101.125	101.625	101.125	5.683	3.968	2.371	7.110
Lebanon / 12-04-2021	USD	2,092.47	2,092.47	8.250	100.000	107.300	107.623	107.300	5.888	4.181	3.003	11.120
Lebanon / 27-05-2022	USD	500.00	500.00	6.250	100.000	100.000	100.500	100.000	6.248	4.227	3.842	18.170
Lebanon / 04-10-2022	USD	1,540.00	1,540.00	6.100	100.000	99.930	100.610	99.930	6.117	4.099	4.101	20.693
Lebanon / 27-01-2023	USD	1,100.00	1,100.00	6.000	100.000	98.450	98.500	98.450	6.349	4.334	4.375	23.250
Lebanon / 26-05-2023	USD	500.00	500.00	6.400	100.000	99.750	100.500	99.750	6.452	4.429	4.519	25.230
Lebanon / 22-04-2024	USD	700.00	700.00	6.650	100.000	100.050	100.110	100.050	6.640	4.415	5.201	32.910
Lebanon / 04-11-2024	USD	500.00	538.47	6.250	100.000	97.800	98.550	97.800	6.647	4.419	5.431	36.894
Lebanon / 03-12-2024	USD	250.00	250.00	7.000	100.000	101.550	102.000	101.550	6.720	4.494	5.402	36.777
Lebanon / 26-02-2025	USD	800.00	800.00	6.200	100.000	96.800	97.300	96.800	6.758	4.528	5.728	40.358
Lebanon / 12-06-2025	USD	800.00	800.00	6.250	100.000	96.625	98.625	96.625	6.823	4.583	5.829	42.470
Lebanon / 27-11-2026	USD	1,600.00	1,600.00	6.600	100.000	97.700	98.250	97.700	6.944	4.557	6.542	54.958
Lebanon / 23-03-2027	USD	1,250.00	1,250.00	6.850	100.000	99.420	99.580	99.420	6.934	4.552	6.805	58.683
Lebanon / 29-11-2027	USD	1,000.00	1,000.00	6.750	100.000	98.300	99.090	98.300	6.986	4.605	7.017	64.210
Lebanon / 03-11-2028	USD	500.00	893.20	6.650	100.000	96.700	96.950	96.700	7.086	4.703	7.415	72.949
Lebanon / 25-05-2029	USD	1,000.00	1,000.00	6.850	100.000	97.375	98.375	97.375	7.187	4.792	7.640	78.010
Lebanon / 26-02-2030	USD	1,400.00	1,400.00	6.650	100.000	95.625	96.375	95.625	7.189	4.802	8.136	87.628
Lebanon / 22-04-2031	USD	300.00	300.00	7.000	100.000	97.875	98.875	97.875	7.249	4.863	8.587	98.780
Lebanon / 23-03-2032	USD	1,000.00	1,000.00	7.000	100.000	97.030	97.600	97.030	7.336	4.955	8.845	106.927
Lebanon / 02-11-2035	USD	600.00	600.00	7.050	100.000	96.520	96.750	96.520	7.403	5.025	9.635	137.405
Lebanon / 23-03-2037	USD	750.00	750.00	7.250	100.000	96.900	97.450	96.900	7.556	5.175	10.132	151.323
TOTAL PUBLIC SECTOR EUROBONDS		29,437.143	26,199.17									

EURO CDS

Not Available

LEBANESE PRIVATE SECTOR EUROBONDS

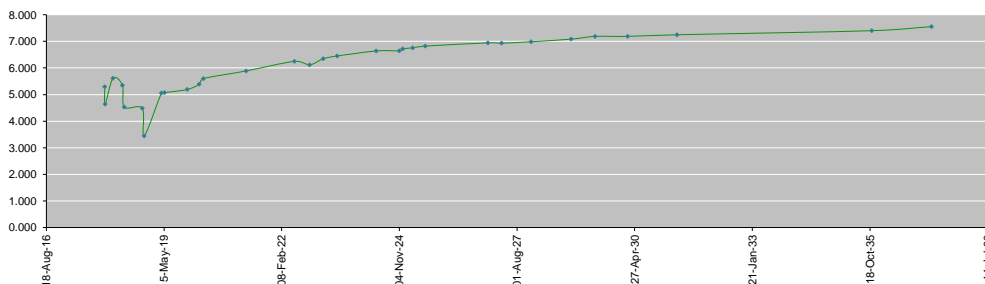
MATURITY	SIZE MM	TYPE	COUPON	ISSUE P.	BID \$	ASK \$	MID. P	YIELD	SPREAD	DURATION	CONVEXITY
BANK MED S.A.L/14-12-2017	USD 500	Euro CD	5.38	99.46	100.55	100.57	100.55	1.27	0.15	0.14	0.04
BANK BYBLOS S.A.L/21-06-2021	USD 300	Note	7	100	101.55	101.87	101.55	6.51	4.81	3.13	12.15

World Yields in Native Terms	O/N	3 Months	6 Months	9 Months	1 Year	2 Years	3 Years	5 Years	7 Years	10 Years	30 Years
EUR	-	-0.82	-0.85	-0.75	-0.76	-0.73	-0.66	-0.29	-0.04	0.44	1.24
U.S.A	-	1.11	1.26	--	1.42	1.57	1.71	2.01	2.22	2.38	2.89
U.K	-	0.30	0.42	--	0.42	0.44	0.53	0.77	0.99	1.32	1.89
Japan	-	-0.20	-0.12	-0.09	-0.14	-0.13	-0.10	-0.08	-0.02	0.07	0.89

Libor	USD	EUR	JPY	GBP
1 Month	1.24	-0.41	-0.02	0.31
2 Months	1.30	-0.39	-0.01	0.34
3 Months	1.36	-0.38	-0.04	0.39
6 Months	1.55	-0.31	0.00	0.53
1 Year	1.83	-0.22	0.12	0.74

Spot Rates	Bid	Ask
Lebanese Pound	1506.47	1521.45
Euro	1.17	1.1738
British Sterling Pound	1.32	1.3174
Japanese Yen	113.76	113.8000
Gold	1273.55	1273.66

Lebanese Republic USD Eurobonds Yield Curve



Disclaimer: The Capital Markets Authority (CMA) publishes reports for general information purposes only. However, under no circumstances the CMA will accept any responsibility or liability in connection with the use of the information provided in these reports or on this website.

Contact us by email: research@cma.gov.lb