

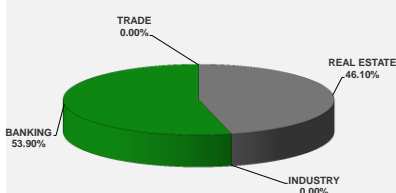
LISTED COMPANIES	LISTED SHARES	MARKET CAP.	TOTAL ORDINARY SHARES	PREFERRED SHARES	PREFERRED SHARES ISSUE PRICE	TOTAL MARKET CAP.	CUR.	TRADED VOLUME	TRADED VALUE	CLOSING PRICE	OPEN PRICE	HIGH PRICE	LOW PRICE	PREVIOUS PRICE
	(MM)	(MM \$)	(MM)	(MM)	USD	(MM \$)								
SOLIDERE A	100.00	811.00	100.00			811.00	USD	14,439	116,331	8.11	7.96	8.15	7.96	8.08
SOLIDERE B	65.00	527.15	65.00			527.15	USD	7,797	63,190	8.11	7.81	8.15	7.81	7.99
BQ.LIB. POUR LE COMMERCE	51.03	47.46	152.70			142.01	USD	-	-	0.93	-	-	-	0.93
BQ.LIB. POUR LE COMMERCE PEF. "B"	0.55	55.00		0.55		55.00	USD	-	-	100.00	-	-	-	100.00
BQ.LIB. POUR LE COMMERCE PEF. "C"	0.35	35.00		0.35		35.00	USD	-	-	100.00	-	-	-	100.00
BQ.LIB. POUR LE COMMERCE PEF. "D"	0.75	75.00		0.75		75.00	USD	-	-	100.00	-	-	-	100.00
BANQUE AUDI	399.75	2326.54	399.75			2326.54	USD	-	-	5.82	-	-	-	5.82
BANQUE AUDI GDR	116.24	681.16				681.16	USD	2,000	11,710	5.86	5.86	5.86	5.85	5.99
BANQUE AUDI PREFERRED "G"	1.50	152.25		1.50	100.00	152.25	USD	500	50,750	101.50	101.50	101.50	101.50	101.50
BANQUE AUDI PREFERRED "H"	0.75	75.90		0.75	100.00	75.90	USD	-	-	101.20	-	-	-	101.20
BANQUE AUDI PREFERRED "I"	2.50	254.25		2.50	100.00	254.25	USD	1,000	101,700	101.70	101.70	101.70	101.70	102.00
BANK OF BEIRUT	16.82	316.26	50.47			948.79	USD	-	-	18.80	-	-	-	18.80
BANK OF BEIRUT PRIORITY	4.76	100.00				100.00	USD	-	-	21.00	-	-	-	21.00
BANK OF BEIRUT PREFERRED SHARES "H"	5.40	136.89		5.40	25.00	136.89	USD	-	-	25.35	-	-	-	25.35
BANK OF BEIRUT PREFERRED SHARES "I"	5.00	127.50		5.00	25.00	127.50	USD	-	-	25.50	-	-	-	25.50
BANK OF BEIRUT PREFERRED SHARES "J"	3.00	76.05		3.00	25.00	76.05	USD	-	-	25.35	-	-	-	25.35
BANK OF BEIRUT PREFERRED SHARES "K"	4.00	101.40		4.00	25.00	101.40	USD	-	-	25.35	-	-	-	25.35
BYBLOS BANK	565.52	916.13	565.52			916.13	USD	-	-	1.62	-	-	-	1.62
BYBLOS BANK GDR	1.31	104.73				104.73	USD	-	-	80.00	-	-	-	80.00
BYBLOS BANK PREFERRED SHARES 2008	2.00	204.00		2.00	100.00	204.00	USD	-	-	102.00	-	-	-	102.00
BYBLOS BANK PREFERRED SHARES 2009	2.00	204.20		2.00	96.00	204.20	USD	-	-	102.10	-	-	-	102.10
BQ.EUROPEENNE PR.M.O	51.40	66.82	62.00			80.60	USD	-	-	1.30	-	-	-	1.30
BQ.EUROPEENNE PR.M.O PREFERRED 20	0.35	35.00		0.35	100.00	35.00	USD	-	-	100.00	-	-	-	100.00
BLOM BANK GDR	73.90	923.70				923.70	USD	-	-	12.50	-	-	-	12.50
BLOM BANK	215.00	2496.15	215.00			2496.15	USD	22,500	261,250	11.61	11.60	11.62	11.60	11.60
RASAMNY-YOUNIS MOTORS CO	10.92	35.49	27.30			88.73	USD	-	-	3.25	-	-	-	3.25
HOLCIM Liban	19.52	257.61	19.52			257.61	USD	-	-	13.20	-	-	-	13.20
STE DES CIMENTS BLANCS B	6.00	21.00	6.00			21.00	USD	-	-	3.50	-	-	-	3.50
STE DES CIMENTS BLANCS N	3.00	5.46	3.00			5.46	USD	-	-	1.82	-	-	-	1.82

<b>TOTAL EXECUTED</b>	<b>1,728.31</b>	<b>11,169.10</b>	<b>1,666.25</b>	<b>11,963.19</b>	<b>48,236</b>	<b>\$604,931</b>
Official USD Closing	1507.5					

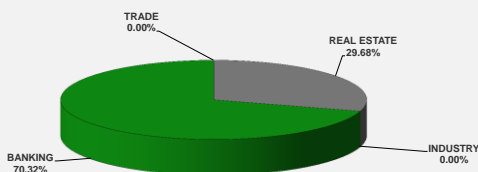
LEBANESE GLOBAL DEPOSITARY RECEIPTS	SHARES MM	BID \$	ASK \$	MID PRICE \$
BLOM BANK	73.90	12.40	12.55	12.48
BYBLOS BANK	1.31	77.00	0.00	77.00
AUDI BANK	116.24	5.86	5.95	5.91

STOCK INDEX	VALUE	PREVIOUS VALUE	% OF CHANGE
MARKET VALUE WEIGHTED INDEX	87.91	87.49	0.48%
NUMBER OF TRANSACTIONS	28		

BEIRUT STOCK EXCHANGE DAILY TRADING VOLUME



BEIRUT STOCK EXCHANGE DAILY TRADING VALUE \$



**Disclaimer:** The Capital Markets Authority (CMA) publishes reports for general information purposes only. However, under no circumstances the CMA will accept any responsibility or liability in connection with the use of the information provided in these reports or on this website.

MATURITY	CURRENCY	ISSUED AMMOUNT (MM)	OUTSTANDING AMOUNT (MM)	COUPON	ISSUE P.	BID\$	ASK\$	MID. P	YIELD	SPREAD	DURATION	CONVEXITY
Lebanon / 27-12-2017	USD	950.00	32.50	5.000	100.000	99.934	99.950	99.934	5.311	4.193	0.165	0.055
Lebanon / 31-12-2017	USD	2,007.51	100.38	4.000	100.000	99.750	100.250	99.750	5.372	4.197	0.174	0.060
Lebanon / 07-03-2018	USD	700.00	35.00	5.000	100.000	99.763	101.763	99.763	5.631	4.500	0.357	0.256
Lebanon / 27-05-2018	USD	200.00	20.00	5.000	100.000	99.875	101.875	99.875	5.371	3.931	0.325	0.327
Lebanon / 12-06-2018	USD	700.00	700.00	5.150	100.000	100.625	102.625	100.625	4.119	2.842	0.605	0.670
Lebanon / 12-11-2018	USD	1,025.00	1,025.00	5.150	100.000	100.653	100.985	100.653	4.499	3.060	0.983	1.476
Lebanon / 28-11-2018	EUR	445.00	445.00	5.350	100.000	102.000	103.000	102.000	3.438	4.164	1.008	2.040
Lebanon / 23-04-2019	USD	500.00	500.00	6.750	100.000	100.250	101.250	100.250	5.323	3.707	1.414	2.720
Lebanon / 20-05-2019	USD	650.00	650.00	6.000	100.000	101.000	102.000	101.000	5.322	3.703	1.443	2.870
Lebanon / 28-11-2019	USD	1,500.00	1,500.00	5.450	100.000	100.000	101.000	100.000	5.447	3.830	1.908	4.739
Lebanon / 09-03-2020	USD	1,200.00	1,200.00	6.375	100.000	101.660	102.200	101.660	5.612	4.000	2.159	5.905
Lebanon / 14-04-2020	USD	700.00	700.00	5.800	100.000	100.000	101.000	100.000	5.799	4.183	2.264	6.406
Lebanon / 19-06-2020	USD	600.00	600.00	6.150	100.000	100.750	101.750	100.750	5.836	4.086	2.365	7.070
Lebanon / 12-04-2021	USD	2,092.47	2,092.47	8.250	100.000	106.750	107.750	106.750	6.056	4.305	2.996	11.080
Lebanon / 27-05-2022	USD	500.00	500.00	6.250	100.000	99.500	100.500	99.500	6.376	4.293	3.834	18.100
Lebanon / 04-10-2022	USD	1,540.00	1,540.00	6.100	100.000	99.125	100.125	99.125	6.310	4.225	4.089	20.598
Lebanon / 27-01-2023	USD	1,100.00	1,100.00	6.000	100.000	97.850	98.150	97.850	6.487	4.401	4.365	23.160
Lebanon / 26-05-2023	USD	500.00	500.00	6.400	100.000	99.000	100.000	99.000	6.616	4.532	4.507	25.120
Lebanon / 22-04-2024	USD	700.00	700.00	6.650	100.000	98.875	99.875	98.875	6.888	4.561	5.188	32.770
Lebanon / 04-11-2024	USD	500.00	538.47	6.250	100.000	96.500	97.500	96.500	6.887	4.578	5.409	36.669
Lebanon / 03-12-2024	USD	250.00	250.00	7.000	100.000	100.625	101.625	100.625	6.885	4.575	5.388	36.626
Lebanon / 26-02-2025	USD	800.00	800.00	6.200	100.000	96.050	96.800	96.050	6.893	4.587	5.714	40.202
Lebanon / 12-06-2025	USD	800.00	800.00	6.250	100.000	96.500	98.500	96.500	6.845	4.582	5.821	42.380
Lebanon / 27-11-2026	USD	1,600.00	1,600.00	6.600	100.000	96.850	97.500	96.850	7.075	4.598	6.522	54.701
Lebanon / 23-03-2027	USD	1,250.00	1,250.00	6.850	100.000	98.125	99.125	98.125	7.126	4.655	6.784	58.400
Lebanon / 29-11-2027	USD	1,000.00	1,000.00	6.750	100.000	97.550	98.470	97.550	7.093	4.619	6.997	63.940
Lebanon / 03-11-2028	USD	500.00	893.20	6.650	100.000	95.000	96.000	95.000	7.319	4.848	7.377	72.408
Lebanon / 25-05-2029	USD	1,000.00	1,000.00	6.850	100.000	97.375	98.375	97.375	7.187	4.790	7.637	77.970
Lebanon / 26-02-2030	USD	1,400.00	1,400.00	6.650	100.000	94.250	95.250	94.250	7.366	4.895	8.096	87.000
Lebanon / 22-04-2031	USD	300.00	300.00	7.000	100.000	96.500	97.500	96.500	7.415	4.947	8.541	97.990
Lebanon / 23-03-2032	USD	1,000.00	1,000.00	7.000	100.000	96.000	97.000	96.000	7.457	4.988	8.813	106.350
Lebanon / 02-11-2035	USD	600.00	600.00	7.050	100.000	95.250	96.250	95.250	7.536	5.066	9.589	136.452
Lebanon / 23-03-2037	USD	750.00	750.00	7.250	100.000	95.250	96.250	95.250	7.725	5.255	10.056	149.652
<b>TOTAL PUBLIC SECTOR EUROBONDS</b>		<b>29,438.968</b>	<b>26,201.00</b>									

**EURO CDS**

Not Available

**LEBANESE PRIVATE SECTOR EUROBONDS**

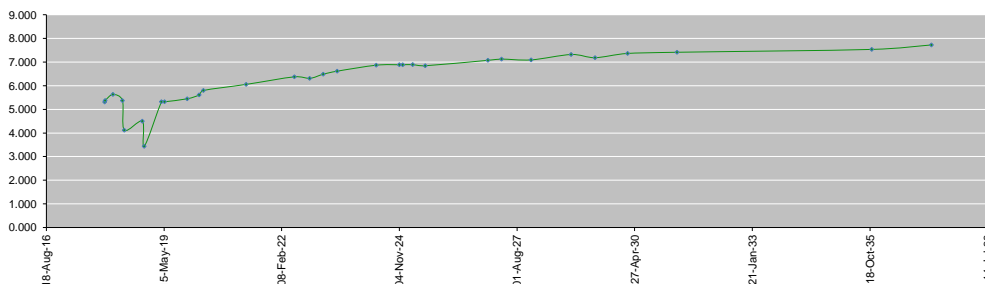
MATURITY	SIZE MM	TYPE	COUPON	ISSUE P.	BID \$	ASK \$	MID. P	YIELD	SPREAD	DURATION	CONVEXITY
BANK MED S.A.L/14-12-2017	USD 500	Euro CD	5.38	99.46	100.53	100.54	100.53	1.29	0.18	0.13	0.03
BANK BYBLOS S.A.L/21-06-2021	USD 300	Note	7	100	101.31	101.64	101.31	6.59	4.83	3.12	12.10

World Yields in Native Terms	O/N	3 Months	6 Months	9 Months	1 Year	2 Years	3 Years	5 Years	7 Years	10 Years	30 Years
EUR	-	-0.82	-0.84	-0.72	-0.73	-0.70	-0.61	-0.25	0.03	0.50	1.29
U.S.A	-	1.13	1.28	--	1.43	1.62	1.75	2.08	2.31	2.47	2.98
U.K	-	0.31	0.43	--	0.50	0.51	0.62	0.88	1.11	1.44	1.96
Japan	-	-0.15	-0.12	-0.10	-0.14	-0.13	-0.10	-0.08	-0.02	0.07	0.87

Libor	USD	EUR	JPY	GBP
1 Month	1.24	-0.41	-0.02	0.33
2 Months	1.30	-0.39	-0.01	0.36
3 Months	1.37	-0.38	-0.03	0.40
6 Months	1.56	-0.32	0.00	0.54
1 Year	1.83	-0.23	0.11	0.75

Spot Rates	Bid	Ask
Lebanese Pound	1505.40	1510.40
Euro	1.18	1.1776
British Sterling Pound	1.32	1.3253
Japanese Yen	114.16	114.1700
Gold	1271.65	1272.45

Lebanese Republic USD Eurobonds Yield Curve



Disclaimer: The Capital Markets Authority (CMA) publishes reports for general information purposes only. However, under no circumstances the CMA will accept any responsibility or liability in connection with the use of the information provided in these reports or on this website.

Contact us by email: [research@cma.gov.lb](mailto:research@cma.gov.lb)