

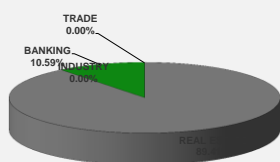
LISTED COMPANIES	LISTED SHARES	MARKET CAP.	TOTAL ORDINARY SHARES	PREFERRED SHARES	PREFERRED SHARES ISSUE PRICE	TOTAL MARKET CAP.	CUR.	TRADED VOLUME	TRADED VALUE	CLOSING PRICE	OPEN PRICE	HIGH PRICE	LOW PRICE	PREVIOUS PRICE
	(MM)	(MM \$)	(MM)	(MM)	USD	(MM \$)								
SOLIDERE A	100.00	825.00	100.00			825.00	USD	62,760	514,759	8.25	8.11	8.25	8.11	8.11
SOLIDERE B	65.00	536.25	65.00			536.25	USD	43,540	356,030	8.25	8.02	8.25	8.00	8.11
BQ.LIB. POUR LE COMMERCE	51.03	47.46	152.70			142.01	USD	-	-	0.93	-	-	-	0.93
BQ.LIB. POUR LE COMMERCE PEF. "B"	0.55	55.00		0.55		55.00	USD	-	-	100.00	-	-	-	100.00
BQ.LIB. POUR LE COMMERCE PEF. "C"	0.35	35.00		0.35		35.00	USD	-	-	100.00	-	-	-	100.00
BQ.LIB. POUR LE COMMERCE PEF. "D"	0.75	75.00		0.75		75.00	USD	-	-	100.00	-	-	-	100.00
BANQUE AUDI	399.75	2326.54	399.75			2326.54	USD	-	-	5.82	-	-	-	5.82
BANQUE AUDI GDR	116.24	683.48				683.48	USD	2,864	16,848	5.88	5.85	5.90	5.85	5.86
BANQUE AUDI PREFERRED "G"	1.50	152.25		1.50	100.00	152.25	USD	1,500	152,250	101.50	101.50	101.50	101.50	101.50
BANQUE AUDI PREFERRED "H"	0.75	75.90		0.75	100.00	75.90	USD	-	-	101.20	-	-	-	101.20
BANQUE AUDI PREFERRED "I"	2.50	254.25		2.50	100.00	254.25	USD	-	-	101.70	-	-	-	101.70
BANK OF BEIRUT	16.82	316.26	50.47			948.79	USD	-	-	18.80	-	-	-	18.80
BANK OF BEIRUT PRIORITY	4.76	100.00				100.00	USD	-	-	21.00	-	-	-	21.00
BANK OF BEIRUT PREFERRED SHARES "H"	5.40	136.89		5.40	25.00	136.89	USD	-	-	25.35	-	-	-	25.35
BANK OF BEIRUT PREFERRED SHARES "I"	5.00	127.50		5.00	25.00	127.50	USD	-	-	25.50	-	-	-	25.50
BANK OF BEIRUT PREFERRED SHARES "J"	3.00	76.05		3.00	25.00	76.05	USD	-	-	25.35	-	-	-	25.35
BANK OF BEIRUT PREFERRED SHARES "K"	4.00	101.40		4.00	25.00	101.40	USD	-	-	25.35	-	-	-	25.35
BYBLOS BANK	565.52	916.13	565.52			916.13	USD	-	-	1.62	-	-	-	1.62
BYBLOS BANK GDR	1.31	104.73				104.73	USD	-	-	80.00	-	-	-	80.00
BYBLOS BANK PREFERRED SHARES 2008	2.00	204.00		2.00	100.00	204.00	USD	-	-	102.00	-	-	-	102.00
BYBLOS BANK PREFERRED SHARES 2009	2.00	204.20		2.00	96.00	204.20	USD	-	-	102.10	-	-	-	102.10
BQ.EUROPEENNE PR.M.O	51.40	66.82	62.00			80.60	USD	-	-	1.30	-	-	-	1.30
BQ.EUROPEENNE PR.M.O PREFERRED 20	0.35	35.00		0.35	100.00	35.00	USD	-	-	100.00	-	-	-	100.00
BLOM BANK GDR	73.90	923.70				923.70	USD	8,223	102,788	12.50	12.50	12.50	12.50	12.50
BLOM BANK	215.00	2496.15	215.00			2496.15	USD	-	-	11.61	-	-	-	11.61
RASAMNY-YOUNIS MOTORS CO	10.92	35.49	27.30			88.73	USD	-	-	3.25	-	-	-	3.25
HOLCIM Liban	19.52	257.61	19.52			257.61	USD	-	-	13.20	-	-	-	13.20
STE DES CIMENTS BLANCS B	6.00	21.00	6.00			21.00	USD	-	-	3.50	-	-	-	3.50
STE DES CIMENTS BLANCS N	3.00	5.46	3.00			5.46	USD	-	-	1.82	-	-	-	1.82

TOTAL EXECUTED	1,728.31	11,194.53	1,666.25	11,988.62	118,887	\$1,142,675
Official USD Closing	1507.5					

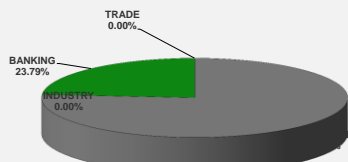
LEBANESE GLOBAL DEPOSITARY RECEIPTS	SHARES MM	BID \$	ASK \$	MID PRICE \$
BLOM BANK	73.90	12.40	12.50	12.45
BYBLOS BANK	1.31	77.00	0.00	77.00
AUDI BANK	116.24	5.85	5.90	5.88

STOCK INDEX	VALUE	PREVIOUS VALUE	% OF CHANGE
MARKET VALUE WEIGHTED INDEX	89.00	87.91	1.24%
NUMBER OF TRANSACTIONS	51		

BEIRUT STOCK EXCHANGE DAILY TRADING VOLUME



BEIRUT STOCK EXCHANGE DAILY TRADING VALUE \$



Disclaimer: The Capital Markets Authority (CMA) publishes reports for general information purposes only. However, under no circumstances the CMA will accept any responsibility or liability in connection with the use of the information provided in these reports or on this website.

MATURITY	CURRENCY	ISSUED AMOUNT (MM)	OUTSTANDING AMOUNT (MM)	COUPON	ISSUE P.	BIDS	ASKS	MID. P	YIELD	SPREAD	DURATION	CONVEXITY
Lebanon / 27-12-2017	USD	950.00	32.50	5.000	100.000	99.937	99.952	99.937	5.311	4.182	0.157	0.049
Lebanon / 31-12-2017	USD	2,007.51	100.38	4.000	100.000	99.750	100.250	99.750	5.441	4.274	0.166	0.055
Lebanon / 07-03-2018	USD	700.00	35.00	5.000	100.000	99.769	101.769	99.769	5.626	4.490	0.349	0.244
Lebanon / 27-05-2018	USD	200.00	20.00	5.000	100.000	99.880	101.880	99.880	5.366	3.924	0.317	0.318
Lebanon / 12-06-2018	USD	700.00	700.00	5.150	100.000	100.500	102.500	100.500	4.312	3.034	0.596	0.660
Lebanon / 12-11-2018	USD	1,025.00	1,025.00	5.150	100.000	100.620	100.780	100.620	4.527	3.098	0.975	1.455
Lebanon / 28-11-2018	EUR	445.00	445.00	5.350	100.000	102.000	103.000	102.000	3.425	4.168	1.000	2.016
Lebanon / 23-04-2019	USD	500.00	500.00	6.750	100.000	100.250	101.250	100.250	5.321	3.717	1.406	2.690
Lebanon / 20-05-2019	USD	650.00	650.00	6.000	100.000	101.000	102.000	101.000	5.319	3.711	1.435	2.850
Lebanon / 28-11-2019	USD	1,500.00	1,500.00	5.450	100.000	100.100	100.425	100.100	5.396	3.794	1.898	4.698
Lebanon / 09-03-2020	USD	1,200.00	1,200.00	6.375	100.000	101.570	102.150	101.570	5.650	4.045	2.151	5.865
Lebanon / 14-04-2020	USD	700.00	700.00	5.800	100.000	99.700	100.950	99.700	5.932	4.331	2.255	6.360
Lebanon / 19-06-2020	USD	600.00	600.00	6.150	100.000	100.375	101.375	100.375	5.990	4.258	2.355	7.020
Lebanon / 12-04-2021	USD	2,092.47	2,092.47	8.250	100.000	105.875	106.875	105.875	6.326	4.594	2.983	10.990
Lebanon / 27-05-2022	USD	500.00	500.00	6.250	100.000	99.375	100.375	99.375	6.408	4.358	3.825	18.030
Lebanon / 04-10-2022	USD	1,540.00	1,540.00	6.100	100.000	98.930	99.650	98.930	6.357	4.307	4.078	20.503
Lebanon / 27-01-2023	USD	1,100.00	1,100.00	6.000	100.000	97.150	97.750	97.150	6.650	4.602	4.352	23.040
Lebanon / 26-05-2023	USD	500.00	500.00	6.400	100.000	98.500	99.500	98.500	6.726	4.676	4.494	25.000
Lebanon / 22-04-2024	USD	700.00	700.00	6.650	100.000	98.500	99.500	98.500	6.941	4.676	5.176	32.640
Lebanon / 04-11-2024	USD	500.00	538.47	6.250	100.000	96.000	97.000	96.000	6.981	4.713	5.394	36.507
Lebanon / 03-12-2024	USD	250.00	250.00	7.000	100.000	100.000	101.000	100.000	6.998	4.732	5.371	36.448
Lebanon / 26-02-2025	USD	800.00	800.00	6.200	100.000	95.100	95.750	95.100	7.067	4.813	5.693	39.957
Lebanon / 12-06-2025	USD	800.00	800.00	6.250	100.000	96.125	98.125	96.125	6.911	4.653	5.808	42.230
Lebanon / 27-11-2026	USD	1,600.00	1,600.00	6.600	100.000	96.200	96.700	96.200	7.176	4.748	6.500	54.425
Lebanon / 23-03-2027	USD	1,250.00	1,250.00	6.850	100.000	98.100	98.110	98.100	7.129	4.703	6.766	58.163
Lebanon / 29-11-2027	USD	1,000.00	1,000.00	6.750	100.000	96.450	97.050	96.450	7.251	4.824	6.962	63.470
Lebanon / 03-11-2028	USD	500.00	893.20	6.650	100.000	94.500	95.500	94.500	7.389	4.960	7.356	72.110
Lebanon / 25-05-2029	USD	1,000.00	1,000.00	6.850	100.000	96.250	97.250	96.250	7.335	4.914	7.597	77.370
Lebanon / 26-02-2030	USD	1,400.00	1,400.00	6.650	100.000	93.875	94.875	93.875	7.415	4.988	8.078	86.702
Lebanon / 22-04-2031	USD	300.00	300.00	7.000	100.000	96.000	97.000	96.000	7.476	5.049	8.517	97.590
Lebanon / 23-03-2032	USD	1,000.00	1,000.00	7.000	100.000	95.375	96.375	95.375	7.530	5.104	8.783	105.833
Lebanon / 02-11-2035	USD	600.00	600.00	7.050	100.000	94.750	95.750	94.750	7.589	5.161	9.557	135.810
Lebanon / 23-03-2037	USD	750.00	750.00	7.250	100.000	94.500	95.500	94.500	7.804	5.377	10.010	148.655
TOTAL PUBLIC SECTOR EUROBONDS		29,438.033	26,200.06									

EURO CDS

Not Available

LEBANESE PRIVATE SECTOR EUROBONDS

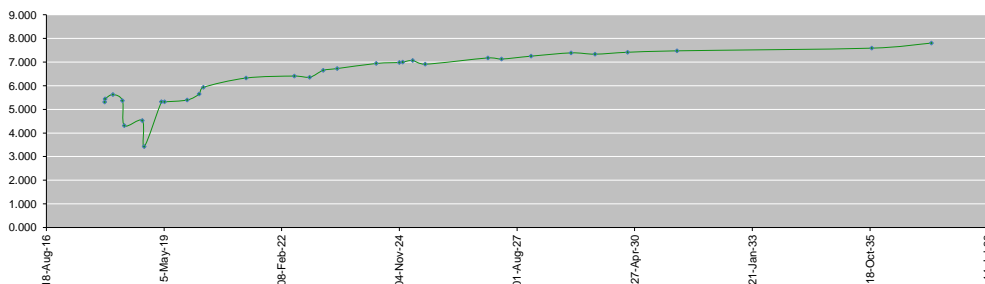
MATURITY	SIZE MM	TYPE	COUPON	ISSUE P.	BID \$	ASK \$	MID. P	YIELD	SPREAD	DURATION	CONVEXITY
BANK MED S.A.L/14-12-2017	USD 500	Euro CD	5.38	99.46	100.49	100.50	100.49	1.30	0.17	0.12	0.03
BANK BYBLOS S.A.L/21-06-2021	USD 300	Note	7	100	101.43	101.75	101.43	6.55	4.82	3.11	12.05

World Yields in Native Terms	O/N	3 Months	6 Months	9 Months	1 Year	2 Years	3 Years	5 Years	7 Years	10 Years	30 Years
EUR	-	-0.83	-0.85	-0.73	-0.74	-0.72	-0.64	-0.28	-0.02	0.44	1.24
U.S.A	-	1.11	1.27	--	1.42	1.60	1.73	2.05	2.27	2.43	2.93
U.K	-	0.32	0.45	--	0.47	0.49	0.58	0.84	1.07	1.39	1.94
Japan	-	-0.15	-0.12	-0.10	-0.15	-0.15	-0.11	-0.09	-0.02	0.07	0.87

Libor	USD	EUR	JPY	GBP
1 Month	1.24	-0.41	-0.03	0.35
2 Months	1.31	-0.39	-0.01	0.38
3 Months	1.37	-0.38	-0.04	0.42
6 Months	1.56	-0.32	0.00	0.55
1 Year	1.84	-0.23	0.11	0.77

Spot Rates	Bid	Ask
Lebanese Pound	1511.00	1521.00
Euro	1.18	1.1758
British Sterling Pound	1.32	1.3199
Japanese Yen	113.83	113.8500
Gold	1274.61	1275.40

Lebanese Republic USD Eurobonds Yield Curve



Disclaimer: The Capital Markets Authority (CMA) publishes reports for general information purposes only. However, under no circumstances the CMA will accept any responsibility or liability in connection with the use of the information provided in these reports or on this website.

Contact us by email: research@cma.gov.lb