

LISTED COMPANIES	LISTED SHARES	MARKET CAP.	TOTAL ORDINARY SHARES	PREFERRED SHARES	PREFERRED SHARES ISSUE PRICE	TOTAL MARKET CAP.	CUR.	TRADED VOLUME	TRADED VALUE	CLOSING PRICE	OPEN PRICE	HIGH PRICE	LOW PRICE	PREVIOUS PRICE
	(MM)	(MM \$)	(MM)	(MM)	USD	(MM \$)								
SOLIDERE A	100.00	807.00	100.00			807.00	USD	3,394	27,378	8.07	8.04	8.10	8.02	8.30
SOLIDERE B	65.00	536.25	65.00			536.25	USD	3,057	25,218	8.25	8.04	8.30	8.04	8.25
BQ.LIB. POUR LE COMMERCE	51.03	47.46	152.70			142.01	USD	-	-	0.93	-	-	-	0.93
BQ.LIB. POUR LE COMMERCE PEF. "B"	0.55	55.00		0.55		55.00	USD	-	-	100.00	-	-	-	100.00
BQ.LIB. POUR LE COMMERCE PEF. "C"	0.35	35.00		0.35		35.00	USD	-	-	100.00	-	-	-	100.00
BQ.LIB. POUR LE COMMERCE PEF. "D"	0.75	75.00		0.75		75.00	USD	-	-	100.00	-	-	-	100.00
BANQUE AUDI	399.75	2358.52	399.75			2358.52	USD	23,519	138,762	5.90	5.90	5.90	5.90	5.90
BANQUE AUDI GDR	116.24	685.80				685.80	USD	-	-	5.90	-	-	-	5.90
BANQUE AUDI PREFERRED "G"	1.50	152.25		1.50	100.00	152.25	USD	-	-	101.50	-	-	-	101.50
BANQUE AUDI PREFERRED "H"	0.75	75.90		0.75	100.00	75.90	USD	-	-	101.20	-	-	-	101.20
BANQUE AUDI PREFERRED "I"	2.50	254.25		2.50	100.00	254.25	USD	-	-	101.70	-	-	-	101.70
BANK OF BEIRUT	16.82	316.26	50.47			948.79	USD	-	-	18.80	-	-	-	18.80
BANK OF BEIRUT PRIORITY	4.76	100.00				100.00	USD	-	-	21.00	-	-	-	21.00
BANK OF BEIRUT PREFERRED SHARES "H"	5.40	137.70		5.40	25.00	137.70	USD	-	-	25.50	-	-	-	25.50
BANK OF BEIRUT PREFERRED SHARES "I"	5.00	127.50		5.00	25.00	127.50	USD	-	-	25.50	-	-	-	25.50
BANK OF BEIRUT PREFERRED SHARES "J"	3.00	76.05		3.00	25.00	76.05	USD	-	-	25.35	-	-	-	25.35
BANK OF BEIRUT PREFERRED SHARES "K"	4.00	101.40		4.00	25.00	101.40	USD	-	-	25.35	-	-	-	25.35
BYBLOS BANK	565.52	916.13	565.52			916.13	USD	18,833	30,509	1.62	1.62	1.62	1.62	1.63
BYBLOS BANK GDR	1.31	104.73				104.73	USD	-	-	80.00	-	-	-	80.00
BYBLOS BANK PREFERRED SHARES 2008	2.00	204.00		2.00	100.00	204.00	USD	-	-	102.00	-	-	-	102.00
BYBLOS BANK PREFERRED SHARES 2009	2.00	204.20		2.00	96.00	204.20	USD	-	-	102.10	-	-	-	102.10
BQ.EUROPEENNE PR.M.O	51.40	66.82	62.00			80.60	USD	-	-	1.30	-	-	-	1.30
BQ.EUROPEENNE PR.M.O PREFERRED 20	0.35	35.00		0.35	100.00	35.00	USD	-	-	100.00	-	-	-	100.00
BLOM BANK GDR	73.90	931.09				931.09	USD	2,780	35,028	12.60	12.60	12.60	12.60	12.62
BLOM BANK	215.00	2491.85	215.00			2491.85	USD	-	-	11.59	-	-	-	11.59
RASAMNY-YOUNIS MOTORS CO	10.92	35.49	27.30			88.73	USD	-	-	3.25	-	-	-	3.25
HOLCIM Liban	19.52	258.20	19.52			258.20	USD	-	-	13.23	-	-	-	13.23
STE DES CIMENTS BLANCS B	6.00	21.00	6.00			21.00	USD	-	-	3.50	-	-	-	3.50
STE DES CIMENTS BLANCS N	3.00	5.46	3.00			5.46	USD	-	-	1.82	-	-	-	1.82

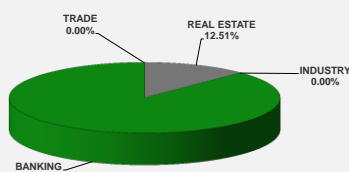
TOTAL EXECUTED 1,728.31 11,215.32 1,666.25 12,009.41 51,583 \$256,895

Official USD Closing 1507.5

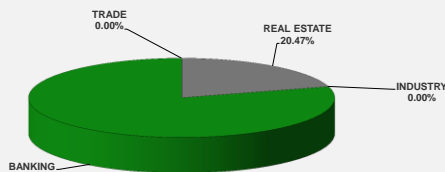
LEBANESE GLOBAL DEPOSITARY RECEIPTS	SHARES MM	BID \$	ASK \$	MID PRICE \$
BLOM BANK	73.90	12.40	12.70	12.55
BYBLOS BANK	1.31	77.00	0.00	77.00
AUDI BANK	116.24	5.85	5.99	5.92

STOCK INDEX	VALUE	PREVIOUS VALUE	% OF CHANGE
MARKET VALUE WEIGHTED INDEX	88.31	89.40	-1.22%
NUMBER OF TRANSACTIONS	16		

BEIRUT STOCK EXCHANGE DAILY TRADING VOLUME



BEIRUT STOCK EXCHANGE DAILY TRADING VALUE \$



Disclaimer: The Capital Markets Authority (CMA) publishes reports for general information purposes only. However, under no circumstances the CMA will accept any responsibility or liability in connection with the use of the information provided in these reports or on this website.

MATURITY	CURRENCY	ISSUED AMOUNT (MM)	OUTSTANDING AMOUNT (MM)	COUPON	ISSUE P.	BIDS	ASKS	MID. P	YIELD	SPREAD	DURATION	CONVEXITY
Lebanon / 27-12-2017	USD	950.00	32.50	5.000	100.000	99.944	99.959	99.944	5.272	4.260	0.154	0.048
Lebanon / 31-12-2017	USD	2,007.51	100.38	4.000	100.000	99.750	100.250	99.750	5.466	4.394	0.163	0.053
Lebanon / 07-03-2018	USD	700.00	35.00	5.000	100.000	99.781	101.781	99.781	5.596	4.527	0.347	0.240
Lebanon / 27-05-2018	USD	200.00	20.00	5.000	100.000	99.891	101.891	99.891	5.334	3.923	0.314	0.316
Lebanon / 12-06-2018	USD	700.00	700.00	5.150	100.000	100.500	102.500	100.500	4.308	3.050	0.594	0.650
Lebanon / 12-11-2018	USD	1,025.00	1,025.00	5.150	100.000	100.000	101.000	100.000	5.148	3.734	0.971	1.445
Lebanon / 28-11-2018	EUR	445.00	445.00	5.350	100.000	102.000	103.000	102.000	3.416	4.182	0.995	2.001
Lebanon / 23-04-2019	USD	500.00	500.00	6.750	100.000	100.250	100.875	100.250	5.321	3.746	1.402	2.680
Lebanon / 20-05-2019	USD	650.00	650.00	6.000	100.000	101.000	101.625	101.000	5.318	3.738	1.431	2.830
Lebanon / 28-11-2019	USD	1,500.00	1,500.00	5.450	100.000	100.150	100.800	100.150	5.370	3.787	1.897	4.692
Lebanon / 09-03-2020	USD	1,200.00	1,200.00	6.375	100.000	101.500	102.150	101.500	5.681	4.099	2.148	5.851
Lebanon / 14-04-2020	USD	700.00	700.00	5.800	100.000	99.900	100.550	99.900	5.843	4.261	2.252	6.343
Lebanon / 19-06-2020	USD	600.00	600.00	6.150	100.000	100.500	101.125	100.500	5.938	4.237	2.352	7.000
Lebanon / 12-04-2021	USD	2,092.47	2,092.47	8.250	100.000	106.250	106.875	106.250	6.206	4.504	2.981	10.980
Lebanon / 27-05-2022	USD	500.00	500.00	6.250	100.000	99.375	100.375	99.375	6.408	4.403	3.822	18.010
Lebanon / 04-10-2022	USD	1,540.00	1,540.00	6.100	100.000	98.900	99.700	98.900	6.364	4.357	4.076	20.480
Lebanon / 27-01-2023	USD	1,100.00	1,100.00	6.000	100.000	97.400	97.750	97.400	6.592	4.586	4.350	23.020
Lebanon / 26-05-2023	USD	500.00	500.00	6.400	100.000	98.625	99.625	98.625	6.699	4.692	4.493	24.980
Lebanon / 22-04-2024	USD	700.00	700.00	6.650	100.000	98.750	99.750	98.750	6.892	4.665	5.176	32.640
Lebanon / 04-11-2024	USD	500.00	538.47	6.250	100.000	96.250	97.250	96.250	6.935	4.704	5.395	36.512
Lebanon / 03-12-2024	USD	250.00	250.00	7.000	100.000	100.250	101.250	100.250	6.953	4.724	5.372	36.453
Lebanon / 26-02-2025	USD	800.00	800.00	6.200	100.000	95.450	95.950	95.450	7.003	4.772	5.694	39.966
Lebanon / 12-06-2025	USD	800.00	800.00	6.250	100.000	94.875	96.875	94.875	7.132	4.887	5.787	41.990
Lebanon / 27-11-2026	USD	1,600.00	1,600.00	6.600	100.000	96.050	97.500	96.050	7.199	4.813	6.503	54.463
Lebanon / 23-03-2027	USD	1,250.00	1,250.00	6.850	100.000	97.375	98.375	97.375	7.238	4.854	6.759	58.070
Lebanon / 29-11-2027	USD	1,000.00	1,000.00	6.750	100.000	96.100	96.680	96.100	7.302	4.916	6.951	63.320
Lebanon / 03-11-2028	USD	500.00	893.20	6.650	100.000	94.875	95.875	94.875	7.337	4.950	7.363	72.200
Lebanon / 25-05-2029	USD	1,000.00	1,000.00	6.850	100.000	95.375	96.375	95.375	7.453	5.069	7.571	76.990
Lebanon / 26-02-2030	USD	1,400.00	1,400.00	6.650	100.000	93.875	94.875	93.875	7.415	5.032	8.075	86.657
Lebanon / 22-04-2031	USD	300.00	300.00	7.000	100.000	96.000	97.000	96.000	7.476	5.091	8.515	97.540
Lebanon / 23-03-2032	USD	1,000.00	1,000.00	7.000	100.000	95.250	96.250	95.250	7.545	5.163	8.776	105.710
Lebanon / 02-11-2035	USD	600.00	600.00	7.050	100.000	94.500	95.500	94.500	7.616	5.230	9.542	135.515
Lebanon / 23-03-2037	USD	750.00	750.00	7.250	100.000	95.125	96.125	95.125	7.738	5.355	10.039	149.293
<b>TOTAL PUBLIC SECTOR EUROBONDS</b>		<b>29,431.581</b>	<b>26,193.81</b>									

**EURO CDS**

Not Available

**LEBANESE PRIVATE SECTOR EUROBONDS**

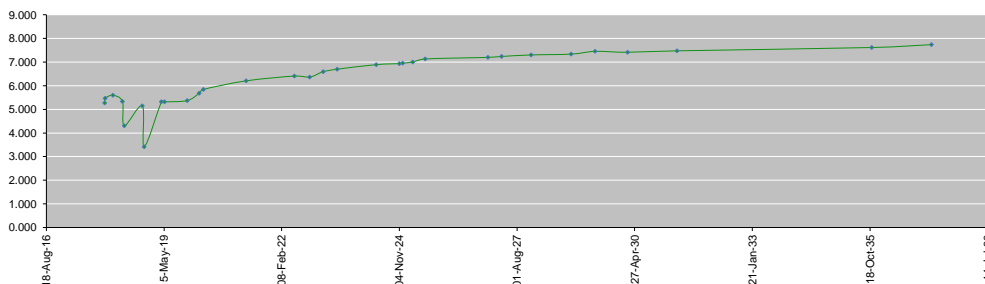
MATURITY	SIZE MM	TYPE	COUPON	ISSUE P.	BID \$	ASK \$	MID. P	YIELD	SPREAD	DURATION	CONVEXITY
BANK MED S.A.L/14-12-2017	USD 500	Euro CD	5.38	99.46	100.47	100.48	100.47	1.31	0.32	0.12	0.03
BANK BYBLOS S.A.L/21-06-2021	USD 300	Note	7	100	101.56	101.89	101.56	6.51	4.81	3.11	12.04

World Yields in Native Terms	O/N	3 Months	6 Months	9 Months	1 Year	2 Years	3 Years	5 Years	7 Years	10 Years	30 Years
EUR	-	-0.83	-0.74	-0.75	-0.77	-0.75	-0.63	-0.35	-0.09	0.38	1.27
U.S.A	-	1.10	1.27	--	1.42	1.59	1.71	2.01	2.23	2.39	2.90
U.K	-	0.33	0.45	--	0.43	0.45	0.53	0.78	1.01	1.34	1.91
Japan	-	-0.20	-0.13	-0.10	-0.16	-0.15	-0.12	-0.09	-0.03	0.07	0.88

Libor	USD	EUR	JPY	GBP
1 Month	1.24	-0.40	-0.02	0.37
2 Months	1.31	-0.39	-0.02	0.39
3 Months	1.38	-0.38	-0.03	0.43
6 Months	1.57	-0.32	0.00	0.56
1 Year	1.85	-0.23	0.11	0.77

Spot Rates	Bid	Ask
Lebanese Pound	1507.00	1513.00
Euro	1.16	1.1613
British Sterling Pound	1.32	1.3199
Japanese Yen	113.43	113.4600
Gold	1271.86	1272.65

Lebanese Republic USD Eurobonds Yield Curve



Disclaimer: The Capital Markets Authority (CMA) publishes reports for general information purposes only. However, under no circumstances the CMA will accept any responsibility or liability in connection with the use of the information provided in these reports or on this website.

Contact us by email: [research@cma.gov.lb](mailto:research@cma.gov.lb)