

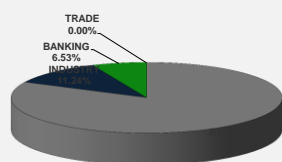
LISTED COMPANIES	LISTED SHARES	MARKET CAP.	TOTAL ORDINARY SHARES	PREFERRED SHARES	PREFERRED SHARES ISSUE PRICE	TOTAL MARKET CAP.	CUR.	TRADED VOLUME	TRADED VALUE	CLOSING PRICE	OPEN PRICE	HIGH PRICE	LOW PRICE	PREVIOUS PRICE
	(MM)	(MM \$)	(MM)	(MM)	USD	(MM \$)								
SOLIDERE A	100.00	834.00	100.00			834.00	USD	38,061	313,273	8.34	8.10	8.35	8.10	8.13
SOLIDERE B	65.00	527.15	65.00			527.15	USD	2,477	20,100	8.11	8.09	8.20	8.08	8.15
BQ.LIB. POUR LE COMMERCE	51.03	47.46	152.70			142.01	USD	-	-	0.93	-	-	-	0.93
BQ.LIB. POUR LE COMMERCE PEF. "B"	0.55	55.00		0.55		55.00	USD	-	-	100.00	-	-	-	100.00
BQ.LIB. POUR LE COMMERCE PEF. "C"	0.35	35.00		0.35		35.00	USD	-	-	100.00	-	-	-	100.00
BQ.LIB. POUR LE COMMERCE PEF. "D"	0.75	75.00		0.75		75.00	USD	-	-	100.00	-	-	-	100.00
BANQUE AUDI	399.75	2358.52	399.75			2358.52	USD	-	-	5.90	-	-	-	5.90
BANQUE AUDI GDR	116.24	685.80				685.80	USD	-	-	5.90	-	-	-	5.90
BANQUE AUDI PREFERRED "G"	1.50	152.25		1.50	100.00	152.25	USD	-	-	101.50	-	-	-	101.50
BANQUE AUDI PREFERRED "H"	0.75	75.90		0.75	100.00	75.90	USD	-	-	101.20	-	-	-	101.20
BANQUE AUDI PREFERRED "I"	2.50	255.00		2.50	100.00	255.00	USD	1,000	102,000	102.00	102.00	102.00	102.00	101.70
BANK OF BEIRUT	16.82	316.26	50.47			948.79	USD	-	-	18.80	-	-	-	18.80
BANK OF BEIRUT PRIORITY	4.76	100.00				100.00	USD	-	-	21.00	-	-	-	21.00
BANK OF BEIRUT PREFERRED SHARES "H"	5.40	137.70		5.40	25.00	137.70	USD	-	-	25.50	-	-	-	25.50
BANK OF BEIRUT PREFERRED SHARES "I"	5.00	127.50		5.00	25.00	127.50	USD	-	-	25.50	-	-	-	25.50
BANK OF BEIRUT PREFERRED SHARES "J"	3.00	76.05		3.00	25.00	76.05	USD	-	-	25.35	-	-	-	25.35
BANK OF BEIRUT PREFERRED SHARES "K"	4.00	101.40		4.00	25.00	101.40	USD	-	-	25.35	-	-	-	25.35
BYBLOS BANK	565.52	921.79	565.52			921.79	USD	1,952	3,182	1.63	1.63	1.63	1.63	1.61
BYBLOS BANK GDR	1.31	101.19				101.19	USD	267	20,639	77.30	77.30	77.30	77.30	80.00
BYBLOS BANK PREFERRED SHARES 2008	2.00	204.00		2.00	100.00	204.00	USD	-	-	102.00	-	-	-	102.00
BYBLOS BANK PREFERRED SHARES 2009	2.00	204.20		2.00	96.00	204.20	USD	-	-	102.10	-	-	-	102.10
BQ.EUROPEENNE PR.M.O	51.40	66.82	62.00			80.60	USD	-	-	1.30	-	-	-	1.30
BQ.EUROPEENNE PR.M.O PREFERRED 20	0.35	35.00		0.35	100.00	35.00	USD	-	-	100.00	-	-	-	100.00
BLOM BANK GDR	73.90	931.09				931.09	USD	-	-	12.60	-	-	-	12.60
BLOM BANK	215.00	2491.85	215.00			2491.85	USD	-	-	11.59	-	-	-	11.59
RASAMNY-YOUNIS MOTORS CO	10.92	35.49	27.30			88.73	USD	-	-	3.25	-	-	-	3.25
HOLCIM Liban	19.52	278.69	19.52			278.69	USD	5,542	79,163	14.28	13.01	14.60	13.01	13.74
STE DES CIMENTS BLANCS B	6.00	21.00	6.00			21.00	USD	-	-	3.50	-	-	-	3.50
STE DES CIMENTS BLANCS N	3.00	5.46	3.00			5.46	USD	-	-	1.82	-	-	-	1.82

TOTAL EXECUTED	1,728.31	11,256.58	1,666.25	12,050.67	49,299	\$538,357
Official USD Closing	1507.5					

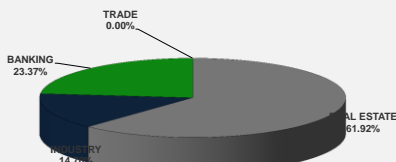
LEBANESE GLOBAL DEPOSITARY RECEIPTS	SHARES MM	BID \$	ASK \$	MID PRICE \$
BLOM BANK	73.90	12.50	12.70	12.60
BYBLOS BANK	1.31	77.00	0.00	77.00
AUDI BANK	116.24	5.95	6.03	5.99

STOCK INDEX	VALUE	PREVIOUS VALUE	% OF CHANGE
MARKET VALUE WEIGHTED INDEX	89.06	88.28	0.87%
NUMBER OF TRANSACTIONS	22		

BEIRUT STOCK EXCHANGE DAILY TRADING VOLUME



BEIRUT STOCK EXCHANGE DAILY TRADING VALUE \$



Disclaimer: The Capital Markets Authority (CMA) publishes reports for general information purposes only. However, under no circumstances the CMA will accept any responsibility or liability in connection with the use of the information provided in these reports or on this website.

MATURITY	CURRENCY	ISSUED AMOUNT (MM)	OUTSTANDING AMOUNT (MM)	COUPON	ISSUE P.	BIDS	ASKS	MID. P	YIELD	SPREAD	DURATION	CONVEXITY
Lebanon / 27-12-2017	USD	950.00	32.50	5.000	100.000	99.938	99.953	99.938	5.324	4.390	0.149	0.044
Lebanon / 31-12-2017	USD	2,007.51	100.38	4.000	100.000	99.896	99.911	99.896	4.599	3.575	0.157	0.049
Lebanon / 07-03-2018	USD	700.00	35.00	5.000	100.000	99.761	101.761	99.761	5.663	4.538	0.341	0.233
Lebanon / 27-05-2018	USD	200.00	20.00	5.000	100.000	99.871	101.871	99.871	5.406	3.943	0.309	0.309
Lebanon / 12-06-2018	USD	700.00	700.00	5.150	100.000	100.625	102.625	100.625	4.092	2.823	0.589	0.640
Lebanon / 12-11-2018	USD	1,025.00	1,025.00	5.150	100.000	100.620	100.780	100.620	4.523	3.080	0.966	1.435
Lebanon / 28-11-2018	EUR	445.00	445.00	5.350	100.000	102.000	103.000	102.000	3.407	4.177	0.990	1.986
Lebanon / 23-04-2019	USD	500.00	500.00	6.750	100.000	100.400	100.900	100.400	5.213	3.614	1.397	2.660
Lebanon / 20-05-2019	USD	650.00	650.00	6.000	100.000	101.250	102.240	101.250	5.147	3.523	1.428	2.830
Lebanon / 28-11-2019	USD	1,500.00	1,500.00	5.450	100.000	100.150	100.700	100.150	5.370	3.751	1.891	4.668
Lebanon / 09-03-2020	USD	1,200.00	1,200.00	6.375	100.000	101.560	102.100	101.560	5.653	4.030	2.143	5.825
Lebanon / 14-04-2020	USD	700.00	700.00	5.800	100.000	99.900	100.550	99.900	5.843	4.220	2.246	6.317
Lebanon / 19-06-2020	USD	600.00	600.00	6.150	100.000	100.750	101.250	100.750	5.834	4.103	2.347	6.980
Lebanon / 12-04-2021	USD	2,092.47	2,092.47	8.250	100.000	106.057	106.374	106.057	6.264	4.518	2.973	10.930
Lebanon / 27-05-2022	USD	500.00	500.00	6.250	100.000	99.500	100.500	99.500	6.377	4.351	3.818	17.970
Lebanon / 04-10-2022	USD	1,540.00	1,540.00	6.100	100.000	98.850	99.450	98.850	6.377	4.345	4.069	20.422
Lebanon / 27-01-2023	USD	1,100.00	1,100.00	6.000	100.000	97.500	97.710	97.500	6.569	4.540	4.345	22.980
Lebanon / 26-05-2023	USD	500.00	500.00	6.400	100.000	98.750	99.750	98.750	6.671	4.645	4.489	24.940
Lebanon / 22-04-2024	USD	700.00	700.00	6.650	100.000	99.170	99.250	99.170	6.810	4.571	5.170	32.570
Lebanon / 04-11-2024	USD	500.00	538.47	6.250	100.000	96.600	97.300	96.600	6.870	4.629	5.392	36.479
Lebanon / 03-12-2024	USD	250.00	250.00	7.000	100.000	100.550	101.050	100.550	6.899	4.668	5.367	36.399
Lebanon / 26-02-2025	USD	800.00	800.00	6.200	100.000	95.450	96.100	95.450	7.003	4.760	5.689	39.913
Lebanon / 12-06-2025	USD	800.00	800.00	6.250	100.000	95.375	97.375	95.375	7.044	4.801	5.789	42.010
Lebanon / 27-11-2026	USD	1,600.00	1,600.00	6.600	100.000	96.450	97.050	96.450	7.137	4.751	6.497	54.385
Lebanon / 23-03-2027	USD	1,250.00	1,250.00	6.850	100.000	97.400	97.850	97.400	7.235	4.849	6.749	57.935
Lebanon / 29-11-2027	USD	1,000.00	1,000.00	6.750	100.000	96.350	97.230	96.350	7.266	4.885	6.955	63.360
Lebanon / 03-11-2028	USD	500.00	893.20	6.650	100.000	95.210	95.700	95.210	7.291	4.915	7.359	72.145
Lebanon / 25-05-2029	USD	1,000.00	1,000.00	6.850	100.000	95.750	96.750	95.750	7.403	5.012	7.576	77.050
Lebanon / 26-02-2030	USD	1,400.00	1,400.00	6.650	100.000	93.950	94.750	93.950	7.406	5.029	8.069	86.557
Lebanon / 22-04-2031	USD	300.00	300.00	7.000	100.000	95.800	97.200	95.800	7.500	5.118	8.509	97.450
Lebanon / 23-03-2032	USD	1,000.00	1,000.00	7.000	100.000	95.530	96.200	95.530	7.512	5.129	8.775	105.682
Lebanon / 02-11-2035	USD	600.00	600.00	7.050	100.000	95.150	95.850	95.150	7.547	5.171	9.561	135.892
Lebanon / 23-03-2037	USD	750.00	750.00	7.250	100.000	95.500	96.100	95.500	7.699	5.324	10.042	149.376
TOTAL PUBLIC SECTOR EUROBONDS		29,432.026	26,194.05									

EURO CDS

Not Available

LEBANESE PRIVATE SECTOR EUROBONDS

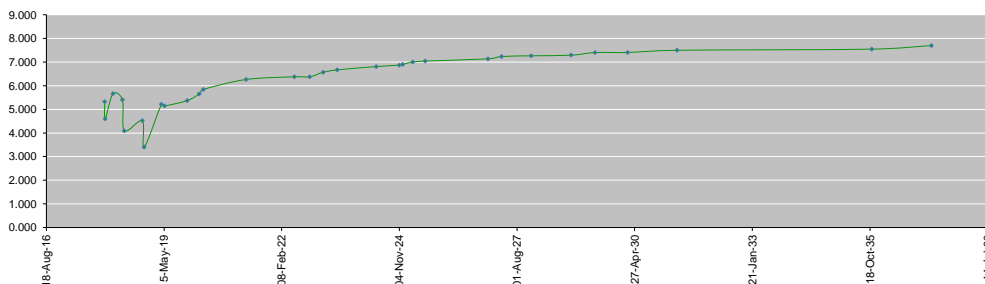
MATURITY	SIZE MM	TYPE	COUPON	Issue P.	BID \$	Ask \$	MID. P	YIELD	SPREAD	DURATION	CONVEXITY
BANK MED S.A.L/14-12-2017	USD 500	Euro CD	5.38	99.46	100.45	100.46	100.45	1.31	0.29	0.11	0.03
BANK BYBLOS S.A.L/21-06-2021	USD 300	Note	7	100	101.50	101.82	101.50	6.53	4.79	3.10	12.00

World Yields in Native Terms	O/N	3 Months	6 Months	9 Months	1 Year	2 Years	3 Years	5 Years	7 Years	10 Years	30 Years
EUR	-	-0.83	-0.57	-0.73	-0.77	-0.74	-0.63	-0.35	-0.08	0.38	1.25
U.S.A	-	1.16	1.29	--	1.44	1.62	1.75	2.03	2.23	2.38	2.86
U.K	-	0.37	0.46	--	0.50	0.49	0.58	0.82	1.05	1.36	1.91
Japan	-	-0.15	-0.13	-0.10	-0.16	-0.16	-0.12	-0.09	-0.03	0.06	0.86

Libor	USD	EUR	JPY	GBP
1 Month	1.24	-0.40	-0.02	0.40
2 Months	1.32	-0.39	-0.03	0.42
3 Months	1.38	-0.38	-0.04	0.44
6 Months	1.58	-0.32	0.00	0.56
1 Year	1.85	-0.23	0.11	0.77

Spot Rates	Bid	Ask
Lebanese Pound	1505.50	1510.50
Euro	1.16	1.1623
British Sterling Pound	1.33	1.3298
Japanese Yen	114.15	114.1600
Gold	1275.73	1275.84

Lebanese Republic USD Eurobonds Yield Curve



Disclaimer: The Capital Markets Authority (CMA) publishes reports for general information purposes only. However, under no circumstances the CMA will accept any responsibility or liability in connection with the use of the information provided in these reports or on this website.

Contact us by email: research@cma.gov.lb