

LISTED COMPANIES	LISTED SHARES	MARKET CAP.	TOTAL ORDINARY SHARES	PREFERRED SHARES	PREFERRED SHARES ISSUE PRICE	TOTAL MARKET CAP.	CUR.	TRADED VOLUME	TRADED VALUE	CLOSING PRICE	OPEN PRICE	HIGH PRICE	LOW PRICE	PREVIOUS PRICE
	(MM)	(MM \$)	(MM)	(MM)	USD	(MM \$)								
SOLIDERE A	100.00	815.00	100.00			815.00	USD	102,183	833,312	8.15	8.20	8.28	8.11	8.12
SOLIDERE B	65.00	528.45	65.00			528.45	USD	1,874	15,235	8.13	8.08	8.13	8.08	8.20
BQ.LIB. POUR LE COMMERCE	51.03	47.46	152.70			142.01	USD	-	-	0.93	-	-	-	0.93
BQ.LIB. POUR LE COMMERCE PEF. "B"	0.55	55.00		0.55		55.00	USD	-	-	100.00	-	-	-	100.00
BQ.LIB. POUR LE COMMERCE PEF. "C"	0.35	35.00		0.35		35.00	USD	-	-	100.00	-	-	-	100.00
BQ.LIB. POUR LE COMMERCE PEF. "D"	0.75	75.00		0.75		75.00	USD	-	-	100.00	-	-	-	100.00
BANQUE AUDI	399.75	2398.50	399.75			2398.50	USD	-	-	6.00	-	-	-	6.00
BANQUE AUDI GDR	116.24	702.08				702.08	USD	-	-	6.04	-	-	-	6.04
BANQUE AUDI PREFERRED "G"	1.50	152.25		1.50	100.00	152.25	USD	-	-	101.50	-	-	-	101.50
BANQUE AUDI PREFERRED "H"	0.75	75.90		0.75	100.00	75.90	USD	-	-	101.20	-	-	-	101.20
BANQUE AUDI PREFERRED "I"	2.50	255.00		2.50	100.00	255.00	USD	-	-	102.00	-	-	-	102.00
BANK OF BEIRUT	16.82	316.26	50.47			948.79	USD	-	-	18.80	-	-	-	18.80
BANK OF BEIRUT PRIORITY	4.76	100.00				100.00	USD	-	-	21.00	-	-	-	21.00
BANK OF BEIRUT PREFERRED SHARES "H"	5.40	137.70		5.40	25.00	137.70	USD	-	-	25.50	-	-	-	25.50
BANK OF BEIRUT PREFERRED SHARES "I"	5.00	127.50		5.00	25.00	127.50	USD	-	-	25.50	-	-	-	25.50
BANK OF BEIRUT PREFERRED SHARES "J"	3.00	76.05		3.00	25.00	76.05	USD	-	-	25.35	-	-	-	25.35
BANK OF BEIRUT PREFERRED SHARES "K"	4.00	101.40		4.00	25.00	101.40	USD	-	-	25.35	-	-	-	25.35
BYBLOS BANK	565.52	921.79	565.52			921.79	USD	-	-	1.63	-	-	-	1.63
BYBLOS BANK GDR	1.31	101.19				101.19	USD	-	-	77.30	-	-	-	77.30
BYBLOS BANK PREFERRED SHARES 2008	2.00	204.00		2.00	100.00	204.00	USD	-	-	102.00	-	-	-	102.00
BYBLOS BANK PREFERRED SHARES 2009	2.00	204.20		2.00	96.00	204.20	USD	-	-	102.10	-	-	-	102.10
BQ.EUROPEENNE PR.M.O	51.40	66.82	62.00			80.60	USD	-	-	1.30	-	-	-	1.30
BQ.EUROPEENNE PR.M.O PREFERRED 20	0.35	35.00		0.35	100.00	35.00	USD	-	-	100.00	-	-	-	100.00
BLOM BANK GDR	73.90	931.09				931.09	USD	-	-	12.60	-	-	-	12.60
BLOM BANK	215.00	2504.75	215.00			2504.75	USD	-	-	11.65	-	-	-	11.65
RASAMNY-YOUNIS MOTORS CO	10.92	35.49	27.30			88.73	USD	-	-	3.25	-	-	-	3.25
HOLCIM Liban	19.52	278.49	19.52			278.49	USD	-	-	14.27	-	-	-	14.27
STE DES CIMENTS BLANCS B	6.00	21.00	6.00			21.00	USD	-	-	3.50	-	-	-	3.50
STE DES CIMENTS BLANCS N	3.00	5.46	3.00			5.46	USD	-	-	1.82	-	-	-	1.82

TOTAL EXECUTED	1,728.31	11,307.83	1,666.25	12,101.92	104,057	\$848,547
Official USD Closing	1507.5					

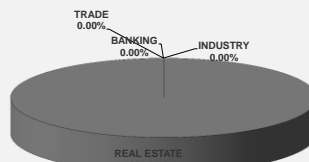
LEBANESE GLOBAL DEPOSITARY RECEIPTS	SHARES MM	BID \$	ASK \$	MID PRICE \$
BLOM BANK	73.90	12.60	12.75	12.68
BYBLOS BANK	1.31	77.00	0.00	77.00
AUDI BANK	116.24	6.08	6.10	6.09

STOCK INDEX	VALUE	PREVIOUS VALUE	% OF CHANGE
MARKET VALUE WEIGHTED INDEX	88.50	88.57	-0.08%
NUMBER OF TRANSACTIONS	22		

BEIRUT STOCK EXCHANGE DAILY TRADING VOLUME



BEIRUT STOCK EXCHANGE DAILY TRADING VALUE \$



Disclaimer: The Capital Markets Authority (CMA) publishes reports for general information purposes only. However, under no circumstances the CMA will accept any responsibility or liability in connection with the use of the information provided in these reports or on this website.

MATURITY	CURRENCY	ISSUED AMOUNT (MM)	OUTSTANDING AMOUNT (MM)	COUPON	ISSUE P.	BID\$	ASK\$	MID. P	YIELD	SPREAD	DURATION	CONVEXITY
Lebanon / 27-12-2017	USD	950.00	32.50	5.000	100.000	99.942	99.956	99.942	5.325	4.394	0.138	0.038
Lebanon / 31-12-2017	USD	2,007.51	100.38	4.000	100.000	99.750	100.250	99.750	5.633	4.632	0.146	0.043
Lebanon / 07-03-2018	USD	700.00	35.00	5.000	100.000	99.775	101.775	99.775	5.641	4.503	0.330	0.218
Lebanon / 27-05-2018	USD	200.00	20.00	5.000	100.000	99.883	101.883	99.883	5.382	3.923	0.298	0.298
Lebanon / 12-06-2018	USD	700.00	700.00	5.150	100.000	100.625	102.625	100.625	4.073	2.798	0.578	0.630
Lebanon / 12-11-2018	USD	1,025.00	1,025.00	5.150	100.000	100.790	100.810	100.790	4.344	2.901	0.956	1.410
Lebanon / 28-11-2018	EUR	445.00	445.00	5.350	100.000	102.000	103.000	102.000	3.388	4.140	0.979	1.955
Lebanon / 23-04-2019	USD	500.00	500.00	6.750	100.000	100.500	101.000	100.500	5.139	3.535	1.387	2.630
Lebanon / 20-05-2019	USD	650.00	650.00	6.000	100.000	101.250	102.090	101.250	5.141	3.528	1.417	2.790
Lebanon / 28-11-2019	USD	1,500.00	1,500.00	5.450	100.000	100.250	100.750	100.250	5.318	3.709	1.881	4.623
Lebanon / 09-03-2020	USD	1,200.00	1,200.00	6.375	100.000	101.610	102.100	101.610	5.626	4.015	2.132	5.775
Lebanon / 14-04-2020	USD	700.00	700.00	5.800	100.000	100.250	100.750	100.250	5.687	4.079	2.237	6.271
Lebanon / 19-06-2020	USD	600.00	600.00	6.150	100.000	100.875	101.375	100.875	5.782	4.060	2.337	6.930
Lebanon / 12-04-2021	USD	2,092.47	2,092.47	8.250	100.000	106.250	106.750	106.250	6.197	4.472	2.965	10.870
Lebanon / 27-05-2022	USD	500.00	500.00	6.250	100.000	99.500	100.500	99.500	6.377	4.377	3.807	17.890
Lebanon / 04-10-2022	USD	1,540.00	1,540.00	6.100	100.000	98.800	99.500	98.800	6.390	4.387	4.058	20.329
Lebanon / 27-01-2023	USD	1,100.00	1,100.00	6.000	100.000	97.320	97.700	97.320	6.613	4.611	4.333	22.870
Lebanon / 26-05-2023	USD	500.00	500.00	6.400	100.000	98.750	99.750	98.750	6.672	4.672	4.478	24.840
Lebanon / 22-04-2024	USD	700.00	700.00	6.650	100.000	98.750	99.750	98.750	6.892	4.691	5.160	32.460
Lebanon / 04-11-2024	USD	500.00	538.47	6.250	100.000	96.375	97.375	96.375	6.912	4.708	5.554	37.520
Lebanon / 03-12-2024	USD	250.00	250.00	7.000	100.000	100.375	101.375	100.375	6.931	4.728	5.358	36.290
Lebanon / 26-02-2025	USD	800.00	800.00	6.200	100.000	95.250	96.250	95.250	7.041	4.837	5.678	39.781
Lebanon / 12-06-2025	USD	800.00	800.00	6.250	100.000	95.375	97.375	95.375	7.045	4.842	5.778	41.880
Lebanon / 27-11-2026	USD	1,600.00	1,600.00	6.600	100.000	96.625	97.625	96.625	7.111	4.762	6.494	54.326
Lebanon / 23-03-2027	USD	1,250.00	1,250.00	6.850	100.000	97.750	98.750	97.750	7.182	4.834	6.750	57.934
Lebanon / 29-11-2027	USD	1,000.00	1,000.00	6.750	100.000	96.700	97.340	96.700	7.216	4.865	6.949	63.270
Lebanon / 03-11-2028	USD	500.00	893.20	6.650	100.000	95.250	96.250	95.250	7.285	4.935	7.611	74.588
Lebanon / 25-05-2029	USD	1,000.00	1,000.00	6.850	100.000	95.500	96.500	95.500	7.437	5.087	7.559	76.790
Lebanon / 26-02-2030	USD	1,400.00	1,400.00	6.650	100.000	94.200	94.950	94.200	7.373	5.022	8.064	86.475
Lebanon / 22-04-2031	USD	300.00	300.00	7.000	100.000	96.375	97.375	96.375	7.430	5.082	8.510	97.450
Lebanon / 23-03-2032	USD	1,000.00	1,000.00	7.000	100.000	95.875	96.875	95.875	7.472	5.123	8.781	105.791
Lebanon / 02-11-2035	USD	600.00	600.00	7.050	100.000	95.550	96.350	95.550	7.505	5.152	9.923	141.114
Lebanon / 23-03-2037	USD	750.00	750.00	7.250	100.000	96.000	97.000	96.000	7.648	5.299	10.066	149.923
TOTAL PUBLIC SECTOR EUROBONDS		29,433.316	26,195.35									

EURO CDS

Not Available

LEBANESE PRIVATE SECTOR EUROBONDS

MATURITY	SIZE MM	TYPE	COUPON	Issue P.	BID \$	Ask \$	MID. P	YIELD	SPREAD	DURATION	CONVEXITY
BANK MED S.A.L/14-12-2017	USD 500	Euro CD	5.38	99.46	100.41	100.42	100.41	1.25	0.23	0.10	0.02
BANK BYBLOS S.A.L/21-06-2021	USD 300	Note	7	100	101.57	101.90	101.57	6.50	4.78	3.09	11.93

World Yields in Native Terms

	O/N	3 Months	6 Months	9 Months	1 Year	2 Years	3 Years	5 Years	7 Years	10 Years	30 Years
EUR	-	-0.83	-0.74	-0.74	-0.74	-0.75	-0.64	-0.35	-0.09	0.37	1.24
U.S.A	-	1.17	1.30	--	1.44	1.62	1.73	2.00	2.21	2.35	2.83
U.K	-	0.39	0.47	--	0.47	0.44	0.50	0.71	0.94	1.26	1.85
Japan	-	-0.15	-0.13	-0.11	-0.17	-0.16	-0.13	-0.10	-0.04	0.06	0.85

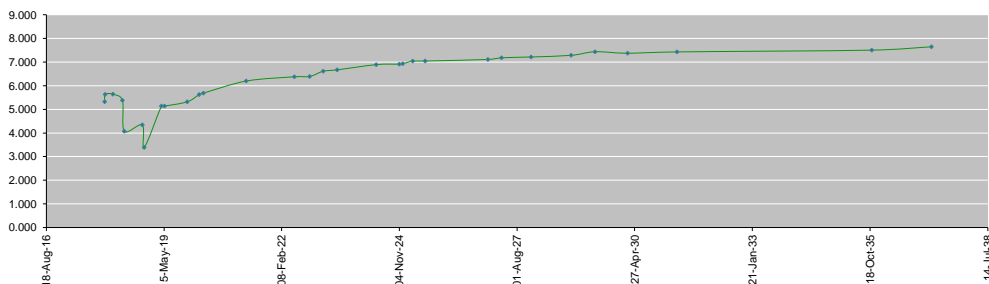
Libor

	USD	EUR	JPY	GBP
1 Month	1.24	-0.40	-0.02	0.42
2 Months	1.32	-0.39	-0.04	0.43
3 Months	1.38	-0.38	-0.04	0.45
6 Months	1.58	-0.32	0.00	0.57
1 Year	1.86	-0.23	0.11	0.78

Spot Rates

	Bid	Ask
Lebanese Pound	1511.00	1521.00
Euro	1.16	1.1651
British Sterling Pound	1.31	1.3081
Japanese Yen	114.09	114.1100
Gold	1274.55	1276.05

Lebanese Republic USD Eurobonds Yield Curve



Disclaimer: The Capital Markets Authority (CMA) publishes reports for general information purposes only. However, under no circumstances the CMA will accept any responsibility or liability in connection with the use of the information provided in these reports or on this website.

Contact us by email: research@cma.gov.lb