

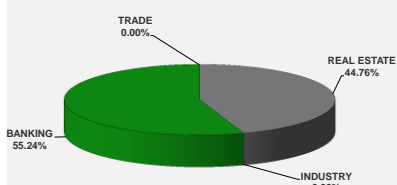
LISTED COMPANIES	LISTED SHARES	MARKET CAP.	TOTAL ORDINARY SHARES	PREFERRED SHARES	PREFERRED SHARES ISSUE PRICE	TOTAL MARKET CAP.	CUR.	TRADED VOLUME	TRADED VALUE	CLOSING PRICE	OPEN PRICE	HIGH PRICE	LOW PRICE	PREVIOUS PRICE
	(MM)	(MM \$)	(MM)	(MM)	USD	(MM \$)								
SOLIDERE A	100.00	783.00	100.00			783.00	USD	8,720	68,462	7.83	7.87	8.00	7.72	7.90
SOLIDERE B	65.00	507.00	65.00			507.00	USD	885	6,901	7.80	7.67	7.98	7.67	7.73
BQ.LIB. POUR LE COMMERCE	51.03	50.52	152.70			151.17	USD	-	-	0.99	-	-	-	0.99
BQ.LIB. POUR LE COMMERCE PEF. "B"	0.55	55.00		0.55		55.00	USD	-	-	100.00	-	-	-	100.00
BQ.LIB. POUR LE COMMERCE PEF. "C"	0.35	35.00		0.35		35.00	USD	-	-	100.00	-	-	-	100.00
BQ.LIB. POUR LE COMMERCE PEF. "D"	0.75	75.00		0.75		75.00	USD	-	-	100.00	-	-	-	100.00
BANQUE AUDI	399.75	2414.49	399.75			2414.49	USD	6,419	38,742	6.04	6.10	6.10	6.00	6.10
BANQUE AUDI GDR	116.24	709.05				709.05	USD	-	-	6.10	-	-	-	6.10
BANQUE AUDI PREFERRED "G"	1.50	150.45		1.50	100.00	150.45	USD	4,779	479,334	100.30	100.30	100.30	100.30	100.30
BANQUE AUDI PREFERRED "H"	0.75	75.38		0.75	100.00	75.38	USD	-	-	100.50	-	-	-	100.50
BANQUE AUDI PREFERRED "I"	2.50	252.75		2.50	100.00	252.75	USD	-	-	101.10	-	-	-	101.10
BANK OF BEIRUT	16.82	316.26	50.47			948.79	USD	-	-	18.80	-	-	-	18.80
BANK OF BEIRUT PRIORITY	4.76	100.00				100.00	USD	-	-	21.00	-	-	-	21.00
BANK OF BEIRUT PREFERRED SHARES "H"	5.40	136.35		5.40	25.00	136.35	USD	-	-	25.25	-	-	-	25.25
BANK OF BEIRUT PREFERRED SHARES "I"	5.00	126.25		5.00	25.00	126.25	USD	-	-	25.25	-	-	-	25.25
BANK OF BEIRUT PREFERRED SHARES "J"	3.00	75.75		3.00	25.00	75.75	USD	-	-	25.25	-	-	-	25.25
BANK OF BEIRUT PREFERRED SHARES "K"	4.00	101.00		4.00	25.00	101.00	USD	-	-	25.25	-	-	-	25.25
BYBLOS BANK	565.52	927.44	565.52			927.44	USD	-	-	1.64	-	-	-	1.64
BYBLOS BANK GDR	1.31	104.73				104.73	USD	-	-	80.00	-	-	-	80.00
BYBLOS BANK PREFERRED SHARES 2008	2.00	202.20		2.00	100.00	202.20	USD	-	-	101.10	-	-	-	101.10
BYBLOS BANK PREFERRED SHARES 2009	2.00	202.20		2.00	96.00	202.20	USD	156	15,772	101.10	101.10	101.10	101.10	101.20
BQ.EUROPEENNE PR.M.O	51.40	84.30	62.00			101.68	USD	-	-	1.64	-	-	-	1.64
BQ.EUROPEENNE PR.M.O PREFERRED 20	0.35	35.00		0.35	100.00	35.00	USD	-	-	100.00	-	-	-	100.00
BLOM BANK GDR	73.90	908.92				908.92	USD	500	6,150	12.30	12.30	12.30	12.30	12.30
BLOM BANK	215.00	2429.50	215.00			2429.50	USD	-	-	11.30	-	-	-	11.30
RASAMNY-YOUNIS MOTORS CO	10.92	35.49	27.30			88.73	USD	-	-	3.25	-	-	-	3.25
HOLCIM Liban	19.52	253.71	19.52			253.71	USD	-	-	13.00	-	-	-	13.00
STE DES CIMENTS BLANCS B	6.00	21.48	6.00			21.48	USD	-	-	3.58	-	-	-	3.58
STE DES CIMENTS BLANCS N	3.00	4.86	3.00			4.86	USD	-	-	1.62	-	-	-	1.62

TOTAL EXECUTED	1,728.31	11,173.08	1,666.25	11,976.87	21,459	\$615,361
Official USD Closing	1507.5					

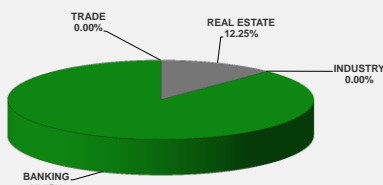
LEBANESE GLOBAL DEPOSITARY RECEIPTS	SHARES MM	BID \$	ASK \$	MID PRICE \$
BLOM BANK	73.90	12.25	12.30	12.28
BYBLOS BANK	1.31	78.00	0.00	78.00
AUDI BANK	116.24	6.03	6.16	6.10

STOCK INDEX	VALUE	PREVIOUS VALUE	% OF CHANGE
MARKET VALUE WEIGHTED INDEX	85.11	85.32	-0.24%
NUMBER OF TRANSACTIONS	24		

BEIRUT STOCK EXCHANGE DAILY TRADING VOLUME



BEIRUT STOCK EXCHANGE DAILY TRADING VALUE \$



Disclaimer: The Capital Markets Authority (CMA) publishes reports for general information purposes only. However, under no circumstances the CMA will accept any responsibility or liability in connection with the use of the information provided in these reports or on this website.

MATURITY	CURRENCY	ISSUED AMMOUNT (MM)	OUTSTANDING AMOUNT (MM)	COUPON	ISSUE P.	BID\$	ASK\$	MID. P	YIELD	SPREAD	DURATION	CONVEXITY
Lebanon / 12-10-2017	USD	775.00	775.00	5.000	100.000	100.250	100.450	100.250	3.649	2.581	0.193	0.075
Lebanon / 27-12-2017	USD	950.00	32.50	5.000	100.000	99.625	99.875	99.625	5.924	4.815	0.394	0.310
Lebanon / 31-12-2017	USD	2,007.51	100.38	4.000	100.000	99.688	100.438	99.688	4.757	3.629	0.405	0.328
Lebanon / 07-03-2018	USD	700.00	70.00	5.000	100.000	98.750	100.750	98.750	8.736	6.012	0.331	0.330
Lebanon / 27-05-2018	USD	200.00	20.00	5.000	100.000	98.750	100.750	98.750	7.271	5.365	0.548	0.627
Lebanon / 12-06-2018	USD	700.00	700.00	5.150	100.000	100.375	102.375	100.375	4.693	3.477	0.834	1.110
Lebanon / 12-11-2018	USD	1,025.00	1,025.00	5.150	100.000	100.450	100.750	100.450	4.777	3.554	1.212	2.091
Lebanon / 28-11-2018	EUR	445.00	445.00	5.350	100.000	101.750	102.500	101.750	3.949	4.615	1.228	2.738
Lebanon / 23-04-2019	USD	500.00	500.00	6.750	100.000	100.150	100.650	100.150	5.402	4.058	1.604	3.440
Lebanon / 20-05-2019	USD	650.00	650.00	6.000	100.000	101.000	101.500	101.000	5.404	4.060	1.671	3.690
Lebanon / 28-11-2019	USD	1,500.00	1,500.00	5.450	100.000	99.450	101.050	99.450	5.702	4.359	2.136	5.774
Lebanon / 09-03-2020	USD	1,200.00	1,200.00	6.375	100.000	101.750	102.500	101.750	5.640	4.136	2.320	6.851
Lebanon / 14-04-2020	USD	700.00	700.00	5.800	100.000	99.900	100.850	99.900	5.837	4.338	2.428	7.395
Lebanon / 19-06-2020	USD	600.00	600.00	6.150	100.000	101.000	101.500	101.000	5.765	4.267	2.594	8.320
Lebanon / 12-04-2021	USD	2,092.47	2,092.47	8.250	100.000	107.375	107.875	107.375	5.991	4.492	3.113	12.150
Lebanon / 27-05-2022	USD	500.00	500.00	6.250	100.000	100.375	101.375	100.375	6.156	4.326	4.070	20.090
Lebanon / 04-10-2022	USD	1,540.00	1,540.00	6.100	100.000	99.500	100.500	99.500	6.213	4.381	4.322	22.666
Lebanon / 27-01-2023	USD	1,100.00	1,100.00	6.000	100.000	98.500	99.500	98.500	6.328	4.499	4.604	25.410
Lebanon / 26-05-2023	USD	500.00	500.00	6.400	100.000	100.375	101.375	100.375	6.320	4.489	4.750	27.480
Lebanon / 22-04-2024	USD	700.00	700.00	6.650	100.000	101.000	102.000	101.000	6.462	4.357	5.275	34.430
Lebanon / 04-11-2024	USD	500.00	538.47	6.250	100.000	98.750	99.750	98.750	6.466	4.361	5.669	39.638
Lebanon / 03-12-2024	USD	250.00	250.00	7.000	100.000	103.000	104.000	103.000	6.478	4.372	5.647	39.585
Lebanon / 26-02-2025	USD	800.00	800.00	6.200	100.000	98.000	99.000	98.000	6.538	4.433	5.791	41.980
Lebanon / 12-06-2025	USD	800.00	800.00	6.250	100.000	98.750	100.750	98.750	6.454	4.351	6.083	45.590
Lebanon / 27-11-2026	USD	1,600.00	1,600.00	6.600	100.000	99.400	101.000	99.400	6.686	4.391	6.806	58.556
Lebanon / 23-03-2027	USD	1,250.00	1,250.00	6.850	100.000	100.625	101.625	100.625	6.759	4.463	6.830	60.228
Lebanon / 29-11-2027	USD	1,000.00	1,000.00	6.750	100.000	99.625	100.625	99.625	6.799	4.507	7.270	67.910
Lebanon / 03-11-2028	USD	500.00	893.20	6.650	100.000	98.375	99.375	98.375	6.858	4.562	7.687	77.140
Lebanon / 25-05-2029	USD	1,000.00	1,000.00	6.850	100.000	99.875	100.875	99.875	6.864	4.569	7.925	82.530
Lebanon / 26-02-2030	USD	1,400.00	1,400.00	6.650	100.000	98.250	99.250	98.250	6.859	4.565	8.160	89.589
Lebanon / 22-04-2031	USD	300.00	300.00	7.000	100.000	100.125	101.125	100.125	6.984	4.689	8.585	100.420
Lebanon / 23-03-2032	USD	1,000.00	1,000.00	7.000	100.000	99.875	100.875	99.875	7.012	4.717	8.863	109.031
Lebanon / 02-11-2035	USD	600.00	600.00	7.050	100.000	99.000	100.000	99.000	7.147	4.852	9.989	144.608
Lebanon / 23-03-2037	USD	750.00	750.00	7.250	100.000	100.125	101.125	100.125	7.237	4.941	10.159	154.188
TOTAL PUBLIC SECTOR EUROBONDS		30,212.099		#REF!								

EURO CDS

Not Available

LEBANESE PRIVATE SECTOR EUROBONDS

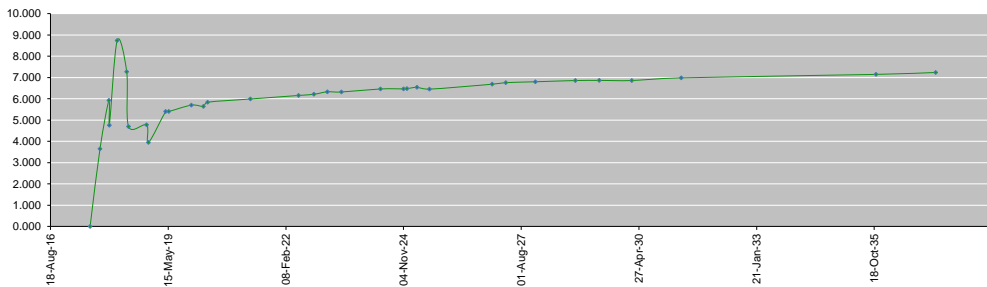
MATURITY	SIZE MM	TYPE	COUPON	Issue P.	BID \$	Ask \$	MID. P	YIELD	SPREAD	DURATION	CONVEXITY
BANK MED S.A.L/14-12-2017	USD 500	Euro CD	5.38	99.46	101.45	101.49	101.45	1.38	0.25	0.37	0.27
BANK BYBLOS S.A.L/21-06-2021	USD 300	Note	7	100	102.25	102.60	102.25	6.34	4.50	3.35	13.73

World Yields in Native Terms	O/N	3 Months	6 Months	9 Months	1 Year	2 Years	3 Years	5 Years	7 Years	10 Years	30 Years
EUR	-	-0.74	-0.69	-0.69	-0.68	-0.70	-0.58	-0.17	0.09	0.55	1.33
U.S.A	-	1.08	1.14	--	1.22	1.35	1.50	1.84	2.11	2.30	2.91
U.K	-	0.19	0.25	--	0.30	0.26	0.32	0.58	0.85	1.23	1.86
Japan	-	-0.11	-0.12	-0.11	-0.11	-0.11	-0.07	-0.06	0.00	0.08	0.88

Libor	USD	EUR	JPY	GBP
1 Months	1.23	-0.40	-0.03	0.25
2 Months	1.26	-0.39	-0.03	0.27
3 Months	1.31	-0.38	-0.01	0.29
6 Months	1.46	-0.30	0.01	0.42
1 Year	1.73	-0.19	0.11	0.63

Spot Rates	Bid	Ask
Lebanese Pound	1506.00	1511.00
Euro	1.17	1.1737
British Sterling Pound	1.31	1.3120
Japanese Yen	110.52	110.5300
Gold	1267.80	1268.55

Lebanese Republic USD Eurobonds Yield Curve



Disclaimer: The Capital Markets Authority (CMA) publishes reports for general information purposes only. However, under no circumstances the CMA will accept any responsibility or liability in connection with the use of the information provided in these reports or on this website.

Contact us by email: research@cma.gov.lb