

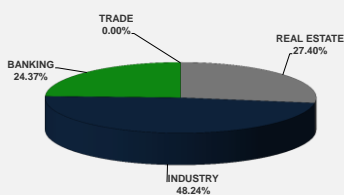
LISTED COMPANIES	LISTED SHARES	MARKET CAP.	TOTAL ORDINARY SHARES	PREFERRED SHARES	PREFERRED SHARES ISSUE PRICE	TOTAL MARKET CAP.	CUR.	TRADED VOLUME	TRADED VALUE	CLOSING PRICE	OPEN PRICE	HIGH PRICE	LOW PRICE	PREVIOUS PRICE
	(MM)	(MM \$)	(MM)	(MM)	USD	(MM \$)								
SOLIERE A	100.00	775.00	100.00			775.00	USD	21,907	169,574	7.75	7.55	7.75	7.55	7.75
SOLIERE B	65.00	503.10	65.00			503.10	USD	4,222	32,698	7.74	7.75	7.75	7.61	7.53
BQ.LIB. POUR LE COMMERCE	51.03	50.52	152.70			151.17	USD	-	-	0.99	-	-	-	0.99
BQ.LIB. POUR LE COMMERCE PEF. "B"	0.55	55.00		0.55		55.00	USD	-	-	100.00	-	-	-	100.00
BQ.LIB. POUR LE COMMERCE PEF. "C"	0.35	35.00		0.35		35.00	USD	-	-	100.00	-	-	-	100.00
BQ.LIB. POUR LE COMMERCE PEF. "D"	0.75	75.00		0.75		75.00	USD	-	-	100.00	-	-	-	100.00
BANQUE AUDI	399.75	2414.49	399.75			2414.49	USD	-	-	6.04	-	-	-	6.04
BANQUE AUDI GDR	116.24	709.05				709.05	USD	-	-	6.10	-	-	-	6.10
BANQUE AUDI PREFERRED "G"	1.50	150.45		1.50	100.00	150.45	USD	121	12,136	100.30	100.30	100.30	100.30	100.30
BANQUE AUDI PREFERRED "H"	0.75	75.38		0.75	100.00	75.38	USD	-	-	100.50	-	-	-	100.50
BANQUE AUDI PREFERRED "I"	2.50	252.75		2.50	100.00	252.75	USD	-	-	101.10	-	-	-	101.10
BANK OF BEIRUT	16.82	316.26	50.47			948.79	USD	-	-	18.80	-	-	-	18.80
BANK OF BEIRUT PRIORITY	4.76	100.00				100.00	USD	-	-	21.00	-	-	-	21.00
BANK OF BEIRUT PREFERRED SHARES "H"	5.40	136.35		5.40	25.00	136.35	USD	-	-	25.25	-	-	-	25.25
BANK OF BEIRUT PREFERRED SHARES "I"	5.00	126.25		5.00	25.00	126.25	USD	-	-	25.25	-	-	-	25.25
BANK OF BEIRUT PREFERRED SHARES "J"	3.00	75.75		3.00	25.00	75.75	USD	-	-	25.25	-	-	-	25.25
BANK OF BEIRUT PREFERRED SHARES "K"	4.00	101.00		4.00	25.00	101.00	USD	-	-	25.25	-	-	-	25.25
BYBLOS BANK	565.52	927.44	565.52			927.44	USD	-	-	1.64	-	-	-	1.64
BYBLOS BANK GDR	1.31	104.73				104.73	USD	-	-	80.00	-	-	-	80.00
BYBLOS BANK PREFERRED SHARES 2008	2.00	202.20		2.00	100.00	202.20	USD	-	-	101.10	-	-	-	101.10
BYBLOS BANK PREFERRED SHARES 2009	2.00	201.60		2.00	96.00	201.60	USD	313	31,565	100.80	100.90	100.90	100.80	101.00
BQ.EUROPEENNE PR.M.O	51.40	84.30	62.00			101.68	USD	-	-	1.64	-	-	-	1.64
BQ.EUROPEENNE PR.M.O PREFERRED 20	0.35	35.00		0.35	100.00	35.00	USD	-	-	100.00	-	-	-	100.00
BLOM BANK GDR	73.90	912.62				912.62	USD	14,528	179,421	12.35	12.35	12.35	12.35	12.30
BLOM BANK	215.00	2418.75	215.00			2418.75	USD	8,275	93,094	11.25	11.25	11.25	11.25	11.27
RASAMNY-YOUNIS MOTORS CO	10.92	35.49	27.30			88.73	USD	-	-	3.25	-	-	-	3.25
HOLCIM Liban	19.52	227.36	19.52			227.36	USD	-	-	11.65	-	-	-	11.65
STE DES CIMENTS BLANCS B	6.00	21.00	6.00			21.00	USD	46,004	161,014	3.50	3.50	3.50	3.50	3.58
STE DES CIMENTS BLANCS N	3.00	4.86	3.00			4.86	USD	-	-	1.62	-	-	-	1.62

TOTAL EXECUTED	1,728.31	11,126.69	1,666.25	11,930.49	95,370	\$679,502
Official USD Closing	1507.5					

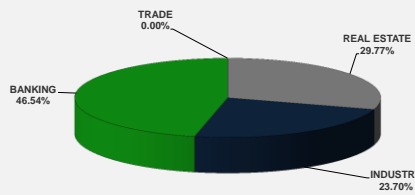
LEBANESE GLOBAL DEPOSITARY RECEIPTS	SHARES MM	BID \$	ASK \$	MID PRICE \$
BLOM BANK	73.90	12.40	12.50	12.45
BYBLOS BANK	1.31	77.00	0.00	77.00
AUDI BANK	116.24	6.01	6.15	6.08

STOCK INDEX	VALUE	PREVIOUS VALUE	% OF CHANGE
MARKET VALUE WEIGHTED INDEX	84.49	83.91	0.68%
NUMBER OF TRANSACTIONS	25		

BEIRUT STOCK EXCHANGE DAILY TRADING VOLUME



BEIRUT STOCK EXCHANGE DAILY TRADING VALUE \$



Disclaimer: The Capital Markets Authority (CMA) publishes reports for general information purposes only. However, under no circumstances the CMA will accept any responsibility or liability in connection with the use of the information provided in these reports or on this website.

MATURITY	CURRENCY	ISSUED AMMOUNT (MM)	OUTSTANDING AMOUNT (MM)	COUPON	ISSUE P.	BID\$	ASK\$	MID. P	YIELD	SPREAD	DURATION	CONVEXITY
Lebanon / 12-10-2017	USD	775.00	775.00	5.000	100.000	100.100	100.400	100.100	4.398	3.321	0.188	0.070
Lebanon / 27-12-2017	USD	950.00	32.50	5.000	100.000	99.625	99.875	99.625	5.936	4.804	0.389	0.302
Lebanon / 31-12-2017	USD	2,007.51	100.38	4.000	100.000	99.688	100.438	99.688	4.766	3.627	0.399	0.319
Lebanon / 07-03-2018	USD	700.00	70.00	5.000	100.000	98.750	100.750	98.750	8.799	6.011	0.326	0.324
Lebanon / 27-05-2018	USD	200.00	20.00	5.000	100.000	98.750	100.750	98.750	7.293	5.374	0.543	0.618
Lebanon / 12-06-2018	USD	700.00	700.00	5.150	100.000	100.500	102.500	100.500	4.540	3.324	0.829	1.100
Lebanon / 12-11-2018	USD	1,025.00	1,025.00	5.150	100.000	100.395	100.960	100.395	4.820	3.594	1.207	2.076
Lebanon / 28-11-2018	EUR	445.00	445.00	5.350	100.000	101.750	102.500	101.750	3.943	4.624	1.223	2.720
Lebanon / 23-04-2019	USD	500.00	500.00	6.750	100.000	100.150	100.650	100.150	5.402	4.054	1.599	3.420
Lebanon / 20-05-2019	USD	650.00	650.00	6.000	100.000	101.000	101.500	101.000	5.402	4.054	1.666	3.670
Lebanon / 28-11-2019	USD	1,500.00	1,500.00	5.450	100.000	99.950	100.450	99.950	5.469	4.122	2.131	5.747
Lebanon / 09-03-2020	USD	1,200.00	1,200.00	6.375	100.000	101.850	102.400	101.850	5.597	4.093	2.315	6.823
Lebanon / 14-04-2020	USD	700.00	700.00	5.800	100.000	100.050	100.850	100.050	5.776	4.274	2.423	7.369
Lebanon / 19-06-2020	USD	600.00	600.00	6.150	100.000	101.000	101.500	101.000	5.765	4.261	2.589	8.290
Lebanon / 12-04-2021	USD	2,092.47	2,092.47	8.250	100.000	107.077	107.417	107.077	6.075	4.571	3.105	12.100
Lebanon / 27-05-2022	USD	500.00	500.00	6.250	100.000	100.375	101.375	100.375	6.156	4.339	4.065	20.040
Lebanon / 04-10-2022	USD	1,540.00	1,540.00	6.100	100.000	99.300	100.190	99.300	6.259	4.447	4.314	22.597
Lebanon / 27-01-2023	USD	1,100.00	1,100.00	6.000	100.000	98.870	99.385	98.870	6.246	4.434	4.599	25.370
Lebanon / 26-05-2023	USD	500.00	500.00	6.400	100.000	100.375	101.375	100.375	6.319	4.502	4.745	27.430
Lebanon / 22-04-2024	USD	700.00	700.00	6.650	100.000	101.400	101.735	101.400	6.388	4.305	5.270	34.380
Lebanon / 04-11-2024	USD	500.00	538.47	6.250	100.000	99.130	99.870	99.130	6.400	4.318	5.667	39.610
Lebanon / 03-12-2024	USD	250.00	250.00	7.000	100.000	103.880	104.080	103.880	6.328	4.244	5.648	39.590
Lebanon / 26-02-2025	USD	800.00	800.00	6.200	100.000	98.750	99.400	98.750	6.410	4.329	5.794	42.005
Lebanon / 12-06-2025	USD	800.00	800.00	6.250	100.000	98.625	100.625	98.625	6.474	4.391	6.076	45.500
Lebanon / 27-11-2026	USD	1,600.00	1,600.00	6.600	100.000	100.050	100.700	100.050	6.591	4.323	6.803	58.520
Lebanon / 23-03-2027	USD	1,250.00	1,250.00	6.850	100.000	101.380	101.730	101.380	6.652	4.380	6.833	60.258
Lebanon / 29-11-2027	USD	1,000.00	1,000.00	6.750	100.000	100.260	100.500	100.260	6.713	4.443	7.270	67.900
Lebanon / 03-11-2028	USD	500.00	893.20	6.650	100.000	98.610	99.100	98.610	6.827	4.563	7.681	77.047
Lebanon / 25-05-2029	USD	1,000.00	1,000.00	6.850	100.000	99.875	100.875	99.875	6.864	4.591	7.920	82.440
Lebanon / 26-02-2030	USD	1,400.00	1,400.00	6.650	100.000	98.250	99.250	98.250	6.859	4.587	8.154	89.498
Lebanon / 22-04-2031	USD	300.00	300.00	7.000	100.000	100.125	101.125	100.125	6.984	4.710	8.579	100.320
Lebanon / 23-03-2032	USD	1,000.00	1,000.00	7.000	100.000	100.380	100.990	100.380	6.957	4.684	8.868	109.117
Lebanon / 02-11-2035	USD	600.00	600.00	7.050	100.000	99.700	100.350	99.700	7.078	4.805	10.006	144.989
Lebanon / 23-03-2037	USD	750.00	750.00	7.250	100.000	100.610	100.990	100.610	7.190	4.918	10.162	154.264
TOTAL PUBLIC SECTOR EUROBONDS		30,216.104		#REF!								

EURO CDS

Not Available

LEBANESE PRIVATE SECTOR EUROBONDS

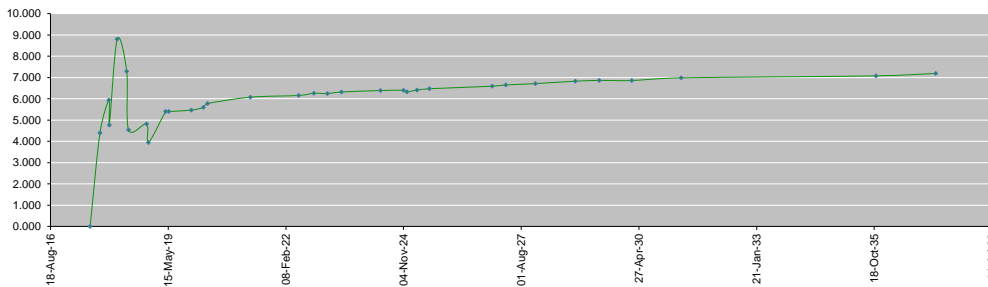
MATURITY	SIZE MM	TYPE	COUPON	Issue P.	BID \$	Ask \$	MID. P	YIELD	SPREAD	DURATION	CONVEXITY
BANK MED S.A.L/14-12-2017	USD 500	Euro CD	5.38	99.46	101.43	101.47	101.43	1.37	0.23	0.36	0.26
BANK BYBLOS S.A.L/21-06-2021	USD 300	Note	7	100	102.31	102.66	102.31	6.32	4.50	3.35	13.70

World Yields in Native Terms	O/N	3 Months	6 Months	9 Months	1 Year	2 Years	3 Years	5 Years	7 Years	10 Years	30 Years
EUR	-	-0.73	-0.72	-0.70	-0.68	-0.70	-0.62	-0.22	0.04	0.50	1.24
U.S.A	-	1.09	1.15	--	1.22	1.36	1.51	1.82	2.08	2.27	2.86
U.K	-	0.19	0.25	--	0.32	0.28	0.32	0.61	0.86	1.24	1.85
Japan	-	-0.12	-0.12	-0.11	-0.11	-0.11	-0.07	-0.06	0.01	0.08	0.88

Libor	USD	EUR	JPY	GBP
1 Months	1.23	-0.40	-0.03	0.25
2 Months	1.26	-0.38	-0.03	0.27
3 Months	1.31	-0.38	-0.01	0.29
6 Months	1.45	-0.30	0.01	0.43
1 Year	1.73	-0.19	0.11	0.63

Spot Rates	Bid	Ask
Lebanese Pound	1505.70	1510.70
Euro	1.18	1.1827
British Sterling Pound	1.32	1.3221
Japanese Yen	110.88	110.8900
Gold	1264.20	1265.70

Lebanese Republic USD Eurobonds Yield Curve



Disclaimer: The Capital Markets Authority (CMA) publishes reports for general information purposes only. However, under no circumstances the CMA will accept any responsibility or liability in connection with the use of the information provided in these reports or on this website.

Contact us by email: research@cma.gov.lb