

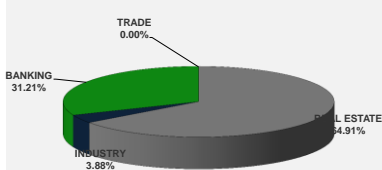
LISTED COMPANIES	LISTED SHARES	MARKET CAP.	TOTAL ORDINARY SHARES	PREFERRED SHARES	PREFERRED SHARES ISSUE PRICE	TOTAL MARKET CAP.	CUR.	TRADED VOLUME	TRADED VALUE	CLOSING PRICE	OPEN PRICE	HIGH PRICE	LOW PRICE	PREVIOUS PRICE
	(MM)	(MM \$)	(MM)	(MM)	USD	(MM \$)								
SOLIDERE A	100.00	796.00	100.00			796.00	USD	8,815	70,240	7.96	8.00	8.00	7.91	7.96
SOLIDERE B	65.00	510.90	65.00			510.90	USD	8,985	70,741	7.86	7.90	7.91	7.73	7.83
BQ.LIB. POUR LE COMMERCE	51.03	47.46	152.70			142.01	USD	-	-	0.93	-	-	-	0.93
BQ.LIB. POUR LE COMMERCE PEF. "B"	0.55	55.00		0.55		55.00	USD	-	-	100.00	-	-	-	100.00
BQ.LIB. POUR LE COMMERCE PEF. "C"	0.35	35.70		0.35		35.70	USD	-	-	102.00	-	-	-	102.00
BQ.LIB. POUR LE COMMERCE PEF. "D"	0.75	75.00		0.75		75.00	USD	-	-	100.00	-	-	-	100.00
BANQUE AUDI	399.75	2346.53	399.75			2346.53	USD	-	-	5.87	-	-	-	5.87
BANQUE AUDI GDR	116.24	685.80				685.80	USD	100	590	5.90	5.90	5.90	5.90	5.95
BANQUE AUDI PREFERRED "G"	1.50	151.50		1.50	100.00	151.50	USD	-	-	101.00	-	-	-	101.00
BANQUE AUDI PREFERRED "H"	0.75	75.90		0.75	100.00	75.90	USD	-	-	101.20	-	-	-	101.20
BANQUE AUDI PREFERRED "I"	2.50	252.50		2.50	100.00	252.50	USD	2,920	294,920	101.00	101.00	101.00	101.00	101.50
BANK OF BEIRUT	16.82	316.26	50.47			948.79	USD	-	-	18.80	-	-	-	18.80
BANK OF BEIRUT PRIORITY	4.76	100.00				100.00	USD	-	-	21.00	-	-	-	21.00
BANK OF BEIRUT PREFERRED SHARES "H"	5.40	136.89		5.40	25.00	136.89	USD	-	-	25.35	-	-	-	25.35
BANK OF BEIRUT PREFERRED SHARES "I"	5.00	126.75		5.00	25.00	126.75	USD	-	-	25.35	-	-	-	25.35
BANK OF BEIRUT PREFERRED SHARES "J"	3.00	76.05		3.00	25.00	76.05	USD	5,100	129,285	25.35	25.35	25.35	25.35	25.35
BANK OF BEIRUT PREFERRED SHARES "K"	4.00	101.40		4.00	25.00	101.40	USD	-	-	25.35	-	-	-	25.35
BYBLOS BANK	565.52	904.82	565.52			904.82	USD	-	-	1.60	-	-	-	1.60
BYBLOS BANK GDR	1.31	104.73				104.73	USD	-	-	80.00	-	-	-	80.00
BYBLOS BANK PREFERRED SHARES 2008	2.00	204.00		2.00	100.00	204.00	USD	-	-	102.00	-	-	-	102.00
BYBLOS BANK PREFERRED SHARES 2009	2.00	204.40		2.00	96.00	204.40	USD	-	-	102.20	-	-	-	102.20
BQ.EUROPEENNE PR.M.O	51.40	79.67	62.00			96.10	USD	-	-	1.55	-	-	-	1.55
BQ.EUROPEENNE PR.M.O PREFERRED 20	0.35	34.83		0.35	100.00	34.83	USD	-	-	99.50	-	-	-	99.50
BLOM BANK GDR	73.90	923.70				923.70	USD	-	-	12.50	-	-	-	12.50
BLOM BANK	215.00	2455.30	215.00			2455.30	USD	440	5,025	11.42	11.42	11.42	11.42	11.36
RASAMNY-YOUNIS MOTORS CO	10.92	35.49	27.30			88.73	USD	-	-	3.25	-	-	-	3.25
HOLCIM Liban	19.52	239.66	19.52			239.66	USD	1,064	13,065	12.28	12.30	12.30	12.25	13.21
STE DES CIMENTS BLANCS B	6.00	23.10	6.00			23.10	USD	-	-	3.85	-	-	-	3.85
STE DES CIMENTS BLANCS N	3.00	5.46	3.00			5.46	USD	-	-	1.82	-	-	-	1.82

TOTAL EXECUTED	1,728.31	11,104.80	1,666.25	11,901.54	27,424	\$583,866
Official USD Closing	1507.5					

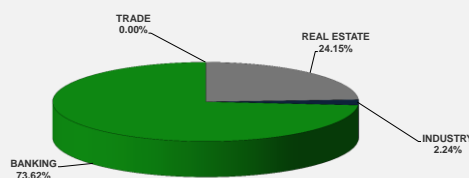
LEBANESE GLOBAL DEPOSITARY RECEIPTS	SHARES MM	BID \$	ASK \$	MID PRICE \$
BLOM BANK	73.90	12.40	12.60	12.50
BYBLOS BANK	1.31	77.00	80.00	78.50
AUDI BANK	116.24	5.90	5.95	5.93

STOCK INDEX	VALUE	PREVIOUS VALUE	% OF CHANGE
MARKET VALUE WEIGHTED INDEX	86.17	86.10	0.08%
NUMBER OF TRANSACTIONS	24		

BEIRUT STOCK EXCHANGE DAILY TRADING VOLUME



BEIRUT STOCK EXCHANGE DAILY TRADING VALUE \$



Disclaimer: The Capital Markets Authority (CMA) publishes reports for general information purposes only. However, under no circumstances the CMA will accept any responsibility or liability in connection with the use of the information provided in these reports or on this website.

MATURITY	CURRENCY	ISSUED AMMOUNT (MM)	OUTSTANDING AMOUNT (MM)	COUPON	ISSUE P.	BID\$	ASK\$	MID. P	YIELD	SPREAD	DURATION	CONVEXITY
Lebanon / 12-10-2017	USD	775.00	775.00	5.000	100.000	100.150	100.160	100.150	0.826	-0.150	0.036	0.003
Lebanon / 27-12-2017	USD	950.00	32.50	5.000	100.000	99.915	99.939	99.915	5.285	4.250	0.241	0.117
Lebanon / 31-12-2017	USD	2,007.51	100.38	4.000	100.000	99.875	100.375	99.875	4.456	3.385	0.251	0.126
Lebanon / 07-03-2018	USD	700.00	35.00	5.000	100.000	99.733	101.733	99.733	5.606	4.409	0.433	0.374
Lebanon / 27-05-2018	USD	200.00	20.00	5.000	100.000	99.855	101.855	99.855	5.345	4.017	0.400	0.419
Lebanon / 12-06-2018	USD	700.00	700.00	5.150	100.000	100.500	102.500	100.500	4.410	3.212	0.680	0.800
Lebanon / 12-11-2018	USD	1,025.00	1,025.00	5.150	100.000	100.600	100.830	100.600	4.589	3.274	1.059	1.667
Lebanon / 28-11-2018	EUR	445.00	445.00	5.350	100.000	102.000	103.000	102.000	3.555	4.291	1.081	2.261
Lebanon / 23-04-2019	USD	500.00	500.00	6.750	100.000	100.375	100.875	100.375	5.245	3.782	1.451	2.900
Lebanon / 20-05-2019	USD	650.00	650.00	6.000	100.000	101.260	102.240	101.260	5.184	3.715	1.520	3.140
Lebanon / 28-11-2019	USD	1,500.00	1,500.00	5.450	100.000	100.300	100.700	100.300	5.298	3.829	1.984	5.071
Lebanon / 09-03-2020	USD	1,200.00	1,200.00	6.375	100.000	101.830	102.400	101.830	5.562	4.091	2.236	6.278
Lebanon / 14-04-2020	USD	700.00	700.00	5.800	100.000	100.450	100.750	100.450	5.606	4.011	2.276	6.604
Lebanon / 19-06-2020	USD	600.00	600.00	6.150	100.000	101.000	101.500	101.000	5.744	4.149	2.440	7.470
Lebanon / 12-04-2021	USD	2,092.47	2,092.47	8.250	100.000	107.629	107.959	107.629	5.830	4.234	2.962	11.160
Lebanon / 27-05-2022	USD	500.00	500.00	6.250	100.000	100.000	100.750	100.000	6.247	4.348	3.913	18.750
Lebanon / 04-10-2022	USD	1,540.00	1,540.00	6.100	100.000	99.730	100.620	99.730	6.163	4.268	4.170	21.300
Lebanon / 27-01-2023	USD	1,100.00	1,100.00	6.000	100.000	98.650	98.720	98.650	6.300	4.404	4.447	23.920
Lebanon / 26-05-2023	USD	500.00	500.00	6.400	100.000	99.750	100.500	99.750	6.451	4.550	4.589	25.900
Lebanon / 22-04-2024	USD	700.00	700.00	6.650	100.000	99.750	100.750	99.750	6.696	4.564	5.106	32.610
Lebanon / 04-11-2024	USD	500.00	538.47	6.250	100.000	97.950	98.711	97.950	6.615	4.486	5.503	37.717
Lebanon / 03-12-2024	USD	250.00	250.00	7.000	100.000	101.670	102.200	101.670	6.701	4.572	5.474	37.592
Lebanon / 26-02-2025	USD	800.00	800.00	6.200	100.000	97.050	97.800	97.050	6.710	4.583	5.804	41.256
Lebanon / 12-06-2025	USD	800.00	800.00	6.250	100.000	97.375	99.375	97.375	6.690	4.596	5.910	43.450
Lebanon / 27-11-2026	USD	1,600.00	1,600.00	6.600	100.000	98.050	98.800	98.050	6.889	4.602	6.620	56.017
Lebanon / 23-03-2027	USD	1,250.00	1,250.00	6.850	100.000	99.840	99.850	99.840	6.873	4.582	6.881	59.752
Lebanon / 29-11-2027	USD	1,000.00	1,000.00	6.750	100.000	98.550	98.850	98.550	6.950	4.661	7.087	65.230
Lebanon / 03-11-2028	USD	500.00	893.20	6.650	100.000	96.625	97.625	96.625	7.093	4.800	7.492	74.133
Lebanon / 25-05-2029	USD	1,000.00	1,000.00	6.850	100.000	98.125	99.125	98.125	7.087	4.796	7.729	79.400
Lebanon / 26-02-2030	USD	1,400.00	1,400.00	6.650	100.000	96.375	97.375	96.375	7.093	4.801	8.229	89.179
Lebanon / 22-04-2031	USD	300.00	300.00	7.000	100.000	98.625	99.625	98.625	7.159	4.868	8.385	96.970
Lebanon / 23-03-2032	USD	1,000.00	1,000.00	7.000	100.000	97.780	98.300	97.780	7.250	4.959	8.939	108.624
Lebanon / 02-11-2035	USD	600.00	600.00	7.050	100.000	96.450	97.620	96.450	7.408	5.117	9.724	139.181
Lebanon / 23-03-2037	USD	750.00	750.00	7.250	100.000	96.400	97.050	96.400	7.607	5.316	10.179	152.275
TOTAL PUBLIC SECTOR EUROBONDS		30,212.232	26,974.26									

EURO CDS

Not Available

LEBANESE PRIVATE SECTOR EUROBONDS

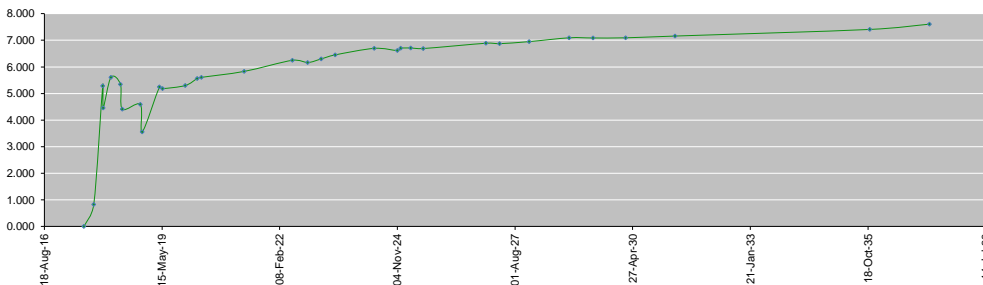
MATURITY	SIZE MM	TYPE	COUPON	Issue P.	BID \$	Ask \$	MID. P	YIELD	SPREAD	DURATION	CONVEXITY
BANK MED S.A.L/14-12-2017	USD 500	Euro CD	5.38	99.46	100.84	100.86	100.84	1.28	0.23	0.21	0.09
BANK BYBLOS S.A.L/21-06-2021	USD 300	Note	7	100	101.95	102.28	101.95	6.40	4.81	3.20	12.64

World Yields in Native Terms	O/N	3 Months	6 Months	9 Months	1 Year	2 Years	3 Years	5 Years	7 Years	10 Years	30 Years
EUR	-	-0.76	-0.84	-0.71	-0.74	-0.69	-0.62	-0.26	-0.01	0.45	1.26
U.S.A	-	1.07	1.20	--	1.31	1.47	1.60	1.90	2.13	2.29	2.83
U.K	-	0.24	0.31	--	0.40	0.46	0.55	0.81	1.04	1.38	1.95
Japan	-	-0.10	-0.13	-0.15	-0.14	-0.13	-0.11	-0.09	-0.04	0.05	0.86

Libor	USD	EUR	JPY	GBP
1 Month	1.23	-0.40	-0.05	0.25
2 Months	1.27	-0.39	-0.04	0.29
3 Months	1.33	-0.38	-0.03	0.33
6 Months	1.50	-0.31	0.00	0.48
1 Year	1.78	-0.22	0.10	0.72

Spot Rates	Bid	Ask
Lebanese Pound	1505.55	1510.55
Euro	1.17	1.1739
British Sterling Pound	1.34	1.3404
Japanese Yen	113.00	113.0200
Gold	1287.07	1287.17

Lebanese Republic USD Eurobonds Yield Curve



Disclaimer: The Capital Markets Authority (CMA) publishes reports for general information purposes only. However, under no circumstances the CMA will accept any responsibility or liability in connection with the use of the information provided in these reports or on this website.

Contact us by email: research@cma.gov.lb