

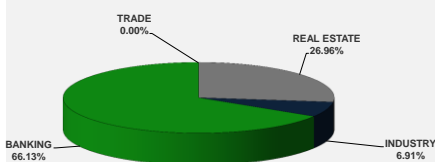
LISTED COMPANIES	LISTED SHARES	MARKET CAP.	TOTAL ORDINARY SHARES	PREFERRED SHARES	PREFERRED SHARES ISSUE PRICE	TOTAL MARKET CAP.	CUR.	TRADED VOLUME	TRADED VALUE	CLOSING PRICE	OPEN PRICE	HIGH PRICE	LOW PRICE	PREVIOUS PRICE
	(MM)	(MM \$)	(MM)	(MM)	USD	(MM \$)								
SOLIERE A	100.00	798.00	100.00			798.00	USD	3,210	25,593	7.98	7.94	8.00	7.94	8.01
SOLIERE B	65.00	518.05	65.00			518.05	USD	2,221	17,712	7.97	7.91	8.00	7.91	8.07
BQ.LIB. POUR LE COMMERCE	51.03	47.46	152.70			142.01	USD	-	-	0.93	-	-	-	0.93
BQ.LIB. POUR LE COMMERCE PEF. "B"	0.55	55.00		0.55		55.00	USD	-	-	100.00	-	-	-	100.00
BQ.LIB. POUR LE COMMERCE PEF. "C"	0.35	35.70		0.35		35.70	USD	-	-	102.00	-	-	-	102.00
BQ.LIB. POUR LE COMMERCE PEF. "D"	0.75	75.00		0.75		75.00	USD	950	95,000	100.00	100.00	100.00	100.00	100.00
BANQUE AUDI	399.75	2338.53	399.75			2338.53	USD	-	-	5.85	-	-	-	5.85
BANQUE AUDI GDR	116.24	697.43				697.43	USD	-	-	6.00	-	-	-	6.00
BANQUE AUDI PREFERRED "G"	1.50	152.25		1.50	100.00	152.25	USD	-	-	101.50	-	-	-	101.50
BANQUE AUDI PREFERRED "H"	0.75	75.90		0.75	100.00	75.90	USD	-	-	101.20	-	-	-	101.20
BANQUE AUDI PREFERRED "I"	2.50	252.50		2.50	100.00	252.50	USD	-	-	101.00	-	-	-	101.00
BANK OF BEIRUT	16.82	316.26	50.47			948.79	USD	-	-	18.80	-	-	-	18.80
BANK OF BEIRUT PRIORITY	4.76	100.00				100.00	USD	-	-	21.00	-	-	-	21.00
BANK OF BEIRUT PREFERRED SHARES "H"	5.40	136.89		5.40	25.00	136.89	USD	-	-	25.35	-	-	-	25.35
BANK OF BEIRUT PREFERRED SHARES "I"	5.00	126.75		5.00	25.00	126.75	USD	-	-	25.35	-	-	-	25.35
BANK OF BEIRUT PREFERRED SHARES "J"	3.00	76.05		3.00	25.00	76.05	USD	-	-	25.35	-	-	-	25.35
BANK OF BEIRUT PREFERRED SHARES "K"	4.00	101.40		4.00	25.00	101.40	USD	-	-	25.35	-	-	-	25.35
BYBLOS BANK	565.52	910.48	565.52			910.48	USD	-	-	1.61	-	-	-	1.61
BYBLOS BANK GDR	1.31	104.73				104.73	USD	-	-	80.00	-	-	-	80.00
BYBLOS BANK PREFERRED SHARES 2008	2.00	204.00		2.00	100.00	204.00	USD	-	-	102.00	-	-	-	102.00
BYBLOS BANK PREFERRED SHARES 2009	2.00	204.20		2.00	96.00	204.20	USD	-	-	102.10	-	-	-	102.10
BQ.EUROPEENNE PR.M.O	51.40	66.82	62.00			80.60	USD	-	-	1.30	-	-	-	1.30
BQ.EUROPEENNE PR.M.O PREFERRED 20	0.35	34.83		0.35	100.00	34.83	USD	-	-	99.50	-	-	-	99.50
BLOM BANK GDR	73.90	934.78				934.78	USD	12,370	156,484	12.65	12.65	12.70	12.50	12.60
BLOM BANK	215.00	2504.75	215.00			2504.75	USD	-	-	11.65	-	-	-	11.65
RASAMNY-YOUNIS MOTORS CO	10.92	35.49	27.30			88.73	USD	-	-	3.25	-	-	-	3.25
HOLCIM Liban	19.52	268.35	19.52			268.35	USD	1,392	19,140	13.75	13.75	13.75	13.75	13.76
STE DES CIMENTS BLANCS B	6.00	21.00	6.00			21.00	USD	-	-	3.50	-	-	-	3.50
STE DES CIMENTS BLANCS N	3.00	5.46	3.00			5.46	USD	-	-	1.82	-	-	-	1.82

TOTAL EXECUTED	1,728.31	11,198.06	1,666.25	11,992.15	20,143	\$313,929
Official USD Closing	1507.5					

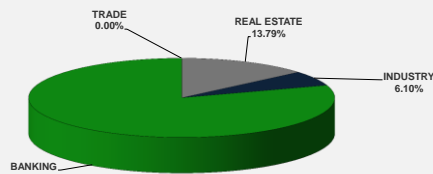
LEBANESE GLOBAL DEPOSITARY RECEIPTS	SHARES MM	BID \$	ASK \$	MID PRICE \$
BLOM BANK	73.90	12.45	12.60	12.53
BYBLOS BANK	1.31	77.10	0.00	77.10
AUDI BANK	116.24	5.95	6.00	5.98

STOCK INDEX	VALUE	PREVIOUS VALUE	% OF CHANGE
MARKET VALUE WEIGHTED INDEX	87.04	87.45	-0.47%
NUMBER OF TRANSACTIONS	18		

BEIRUT STOCK EXCHANGE DAILY TRADING VOLUME



BEIRUT STOCK EXCHANGE DAILY TRADING VALUE \$



Disclaimer: The Capital Markets Authority (CMA) publishes reports for general information purposes only. However, under no circumstances the CMA will accept any responsibility or liability in connection with the use of the information provided in these reports or on this website.

MATURITY	CURRENCY	ISSUED AMMOUNT (MM)	OUTSTANDING AMOUNT (MM)	COUPON	ISSUE P.	BID\$	ASK\$	MID. P	YIELD	SPREAD	DURATION	CONVEXITY
Lebanon / 12-10-2017	USD	775.00	775.00	5.000	100.000	100.030	100.100	100.030	5.658	0.000	0.000	0.000
Lebanon / 27-12-2017	USD	950.00	32.50	5.000	100.000	99.921	99.940	99.921	5.324	4.240	0.195	0.076
Lebanon / 31-12-2017	USD	2,007.51	100.38	4.000	100.000	99.875	100.375	99.875	4.560	3.448	0.204	0.083
Lebanon / 07-03-2018	USD	700.00	35.00	5.000	100.000	99.743	101.743	99.743	5.640	4.392	0.387	0.300
Lebanon / 27-05-2018	USD	200.00	20.00	5.000	100.000	99.859	101.859	99.859	5.382	3.975	0.355	0.362
Lebanon / 12-06-2018	USD	700.00	700.00	5.150	100.000	100.500	102.500	100.500	4.359	3.110	0.634	0.720
Lebanon / 12-11-2018	USD	1,025.00	1,025.00	5.150	100.000	100.547	100.946	100.547	4.618	3.208	1.013	1.549
Lebanon / 28-11-2018	EUR	445.00	445.00	5.350	100.000	102.000	103.000	102.000	3.486	4.218	1.037	2.125
Lebanon / 23-04-2019	USD	500.00	500.00	6.750	100.000	100.250	101.250	100.250	5.326	3.818	1.406	2.740
Lebanon / 20-05-2019	USD	650.00	650.00	6.000	100.000	101.000	102.000	101.000	5.333	3.822	1.473	2.980
Lebanon / 28-11-2019	USD	1,500.00	1,500.00	5.450	100.000	100.500	100.950	100.500	5.194	3.681	1.939	4.874
Lebanon / 09-03-2020	USD	1,200.00	1,200.00	6.375	100.000	102.100	102.700	102.100	5.426	3.912	2.192	6.062
Lebanon / 14-04-2020	USD	700.00	700.00	5.800	100.000	100.350	101.050	100.350	5.647	3.990	2.295	6.562
Lebanon / 19-06-2020	USD	600.00	600.00	6.150	100.000	100.750	101.750	100.750	5.839	4.185	2.395	7.230
Lebanon / 12-04-2021	USD	2,092.47	2,092.47	8.250	100.000	107.500	108.000	107.500	5.842	4.185	3.029	11.290
Lebanon / 27-05-2022	USD	500.00	500.00	6.250	100.000	100.000	101.000	100.000	6.248	4.308	3.868	18.380
Lebanon / 04-10-2022	USD	1,540.00	1,540.00	6.100	100.000	99.800	100.690	99.800	6.147	4.205	4.125	20.903
Lebanon / 27-01-2023	USD	1,100.00	1,100.00	6.000	100.000	98.500	99.500	98.500	6.336	4.397	4.404	23.510
Lebanon / 26-05-2023	USD	500.00	500.00	6.400	100.000	100.000	101.000	100.000	6.398	4.458	4.547	25.500
Lebanon / 22-04-2024	USD	700.00	700.00	6.650	100.000	100.000	101.000	100.000	6.650	4.491	5.063	32.160
Lebanon / 04-11-2024	USD	500.00	538.47	6.250	100.000	97.750	98.750	97.750	6.654	4.493	5.456	37.181
Lebanon / 03-12-2024	USD	250.00	250.00	7.000	100.000	101.500	102.500	101.500	6.730	4.570	5.429	37.082
Lebanon / 26-02-2025	USD	800.00	800.00	6.200	100.000	97.000	98.000	97.000	6.721	4.562	5.759	40.715
Lebanon / 12-06-2025	USD	800.00	800.00	6.250	100.000	97.125	99.125	97.125	6.735	4.571	5.860	42.850
Lebanon / 27-11-2026	USD	1,600.00	1,600.00	6.600	100.000	98.150	98.850	98.150	6.875	4.543	6.576	55.408
Lebanon / 23-03-2027	USD	1,250.00	1,250.00	6.850	100.000	99.500	100.500	99.500	6.922	4.590	6.838	59.141
Lebanon / 29-11-2027	USD	1,000.00	1,000.00	6.750	100.000	98.600	99.580	98.600	6.943	4.610	7.049	64.680
Lebanon / 03-11-2028	USD	500.00	893.20	6.650	100.000	97.000	98.000	97.000	7.045	4.711	7.455	73.553
Lebanon / 25-05-2029	USD	1,000.00	1,000.00	6.850	100.000	98.000	99.000	98.000	7.105	4.772	7.680	78.630
Lebanon / 26-02-2030	USD	1,400.00	1,400.00	6.650	100.000	96.500	97.500	96.500	7.078	4.746	8.187	88.460
Lebanon / 22-04-2031	USD	300.00	300.00	7.000	100.000	98.000	99.000	98.000	7.234	4.902	8.320	95.860
Lebanon / 23-03-2032	USD	1,000.00	1,000.00	7.000	100.000	97.375	98.375	97.375	7.296	4.964	8.888	107.694
Lebanon / 02-11-2035	USD	600.00	600.00	7.050	100.000	96.750	97.750	96.750	7.378	5.045	9.688	138.471
Lebanon / 23-03-2037	USD	750.00	750.00	7.250	100.000	97.000	98.000	97.000	7.546	5.214	10.172	152.175
TOTAL PUBLIC SECTOR EUROBONDS		30,217.394	26,979.42									

EURO CDS

Not Available

LEBANESE PRIVATE SECTOR EUROBONDS

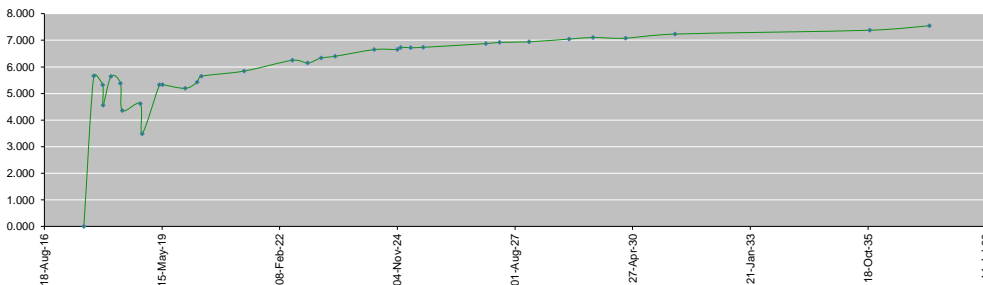
MATURITY	SIZE MM	TYPE	COUPON	Issue P.	BID \$	Ask \$	MID. P	YIELD	SPREAD	DURATION	CONVEXITY
BANK MED S.A.L/14-12-2017	USD 500	Euro CD	5.38	99.46	100.65	100.66	100.65	1.29	0.19	0.16	0.05
BANK BYBLOS S.A.L/21-06-2021	USD 300	Note	7	100	101.79	102.12	101.79	6.44	4.79	3.15	12.32

World Yields in Native Terms	O/N	3 Months	6 Months	9 Months	1 Year	2 Years	3 Years	5 Years	7 Years	10 Years	30 Years
EUR	-	-0.82	-0.84	-0.70	-0.73	-0.70	-0.63	-0.28	-0.02	0.45	1.24
U.S.A	-	1.09	1.24	--	1.40	1.51	1.66	1.94	2.16	2.33	2.87
U.K	-	0.25	0.40	--	0.44	0.46	0.55	0.80	1.02	1.37	1.94
Japan	-	-0.12	-0.12	-0.09	-0.14	-0.14	-0.10	-0.08	-0.03	0.06	0.87

Libor	USD	EUR	JPY	GBP
1 Month	1.24	-0.40	-0.03	0.28
2 Months	1.27	-0.39	-0.03	0.33
3 Months	1.36	-0.38	-0.04	0.37
6 Months	1.53	-0.31	0.00	0.52
1 Year	1.81	-0.22	0.10	0.74

Spot Rates	Bid	Ask
Lebanese Pound	1506.49	1513.30
Euro	1.19	1.1856
British Sterling Pound	1.31	1.3136
Japanese Yen	112.26	112.2900
Gold	1294.65	1294.77

Lebanese Republic USD Eurobonds Yield Curve



Disclaimer: The Capital Markets Authority (CMA) publishes reports for general information purposes only. However, under no circumstances the CMA will accept any responsibility or liability in connection with the use of the information provided in these reports or on this website.

Contact us by email: research@cma.gov.lb