

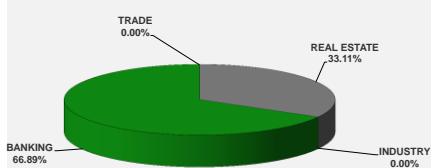
LISTED COMPANIES	LISTED SHARES	MARKET CAP.	TOTAL ORDINARY SHARES	PREFERRED SHARES	PREFERRED SHARES ISSUE PRICE	TOTAL MARKET CAP.	CUR.	TRADED VOLUME	TRADED VALUE	CLOSING PRICE	OPEN PRICE	HIGH PRICE	LOW PRICE	PREVIOUS PRICE
	(MM)	(MM \$)	(MM)	(MM)	USD	(MM \$)								
SOLIERE A	100.00	801.00	100.00			801.00	USD	70,933	567,364	8.01	7.90	8.03	7.85	7.95
SOLIERE B	65.00	520.00	65.00			520.00	USD	3,033	24,248	8.00	7.85	8.01	7.85	8.16
BQ.LIB. POUR LE COMMERCE	51.03	47.46	152.70			142.01	USD	-	-	0.93	-	-	-	0.93
BQ.LIB. POUR LE COMMERCE PEF. "B"	0.55	55.00		0.55		55.00	USD	-	-	100.00	-	-	-	100.00
BQ.LIB. POUR LE COMMERCE PEF. "C"	0.35	35.00		0.35		35.00	USD	-	-	100.00	-	-	-	100.00
BQ.LIB. POUR LE COMMERCE PEF. "D"	0.75	75.00		0.75		75.00	USD	-	-	100.00	-	-	-	100.00
BANQUE AUDI	399.75	2358.52	399.75			2358.52	USD	2,000	11,800	5.90	5.90	5.90	5.90	5.85
BANQUE AUDI GDR	116.24	691.62				691.62	USD	-	-	5.95	-	-	-	5.95
BANQUE AUDI PREFERRED "G"	1.50	152.25		1.50	100.00	152.25	USD	-	-	101.50	-	-	-	101.50
BANQUE AUDI PREFERRED "H"	0.75	75.90		0.75	100.00	75.90	USD	-	-	101.20	-	-	-	101.20
BANQUE AUDI PREFERRED "I"	2.50	252.75		2.50	100.00	252.75	USD	-	-	101.10	-	-	-	101.10
BANK OF BEIRUT	16.82	316.26	50.47			948.79	USD	-	-	18.80	-	-	-	18.80
BANK OF BEIRUT PRIORITY	4.76	100.00				100.00	USD	-	-	21.00	-	-	-	21.00
BANK OF BEIRUT PREFERRED SHARES "H"	5.40	136.89		5.40	25.00	136.89	USD	-	-	25.35	-	-	-	25.35
BANK OF BEIRUT PREFERRED SHARES "I"	5.00	126.75		5.00	25.00	126.75	USD	-	-	25.35	-	-	-	25.35
BANK OF BEIRUT PREFERRED SHARES "J"	3.00	76.05		3.00	25.00	76.05	USD	-	-	25.35	-	-	-	25.35
BANK OF BEIRUT PREFERRED SHARES "K"	4.00	101.40		4.00	25.00	101.40	USD	-	-	25.35	-	-	-	25.35
BYBLOS BANK	565.52	921.79	565.52			921.79	USD	2,800	4,564	1.63	1.63	1.63	1.63	1.60
BYBLOS BANK GDR	1.31	104.73				104.73	USD	-	-	80.00	-	-	-	80.00
BYBLOS BANK PREFERRED SHARES 2008	2.00	204.00		2.00	100.00	204.00	USD	500	51,000	102.00	102.00	102.00	102.00	102.00
BYBLOS BANK PREFERRED SHARES 2009	2.00	204.00		2.00	96.00	204.00	USD	3,924	400,248	102.00	102.00	102.00	102.00	102.00
BQ.EUROPEENNE PR.M.O	51.40	66.82	62.00			80.60	USD	-	-	1.30	-	-	-	1.30
BQ.EUROPEENNE PR.M.O PREFERRED 20	0.35	35.00		0.35	100.00	35.00	USD	-	-	100.00	-	-	-	100.00
BLOM BANK GDR	73.90	923.70				923.70	USD	125,193	1,565,755	12.50	12.55	12.55	12.50	12.50
BLOM BANK	215.00	2494.00	215.00			2494.00	USD	15,000	174,000	11.60	11.60	11.60	11.60	11.60
RASAMNY-YOUNIS MOTORS CO	10.92	35.49	27.30			88.73	USD	-	-	3.25	-	-	-	3.25
HOLCIM Liban	19.52	263.47	19.52			263.47	USD	-	-	13.50	-	-	-	13.50
STE DES CIMENTS BLANCS B	6.00	21.00	6.00			21.00	USD	-	-	3.50	-	-	-	3.50
STE DES CIMENTS BLANCS N	3.00	5.46	3.00			5.46	USD	-	-	1.82	-	-	-	1.82

TOTAL EXECUTED	1,728.31	11,201.30	1,666.25	11,995.39	223,383	\$2,798,979
Official USD Closing	1507.5					

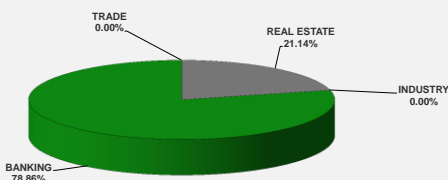
LEBANESE GLOBAL DEPOSITARY RECEIPTS	SHARES MM	BID \$	ASK \$	MID PRICE \$
BLOM BANK	73.90	12.50	12.55	12.53
BYBLOS BANK	1.31	77.00	0.00	77.00
AUDI BANK	116.24	5.95	6.08	6.02

STOCK INDEX	VALUE	PREVIOUS VALUE	% OF CHANGE
MARKET VALUE WEIGHTED INDEX	87.15	87.27	-0.14%
NUMBER OF TRANSACTIONS	48		

BEIRUT STOCK EXCHANGE DAILY TRADING VOLUME



BEIRUT STOCK EXCHANGE DAILY TRADING VALUE \$



Disclaimer: The Capital Markets Authority (CMA) publishes reports for general information purposes only. However, under no circumstances the CMA will accept any responsibility or liability in connection with the use of the information provided in these reports or on this website.

MATURITY	CURRENCY	ISSUED AMOUNT (MM)	OUTSTANDING AMOUNT (MM)	COUPON	ISSUE P.	BID\$	ASK\$	MID. P	YIELD	SPREAD	DURATION	CONVEXITY
Lebanon / 27-12-2017	USD	950.00	32.50	5.000	100.000	99.933	99.950	99.933	5.300	4.209	0.173	0.060
Lebanon / 31-12-2017	USD	2,007.51	100.38	4.000	100.000	99.890	99.908	99.890	4.547	3.416	0.182	0.066
Lebanon / 07-03-2018	USD	700.00	35.00	5.000	100.000	99.763	101.763	99.763	5.618	4.350	0.366	0.267
Lebanon / 27-05-2018	USD	200.00	20.00	5.000	100.000	99.876	101.876	99.876	5.358	3.934	0.333	0.337
Lebanon / 12-06-2018	USD	700.00	700.00	5.150	100.000	100.375	102.375	100.375	4.534	3.272	0.612	0.680
Lebanon / 12-11-2018	USD	1,025.00	1,025.00	5.150	100.000	100.670	100.830	100.670	4.487	3.064	0.991	1.495
Lebanon / 28-11-2018	EUR	445.00	445.00	5.350	100.000	102.000	103.000	102.000	3.451	4.187	1.016	2.063
Lebanon / 23-04-2019	USD	500.00	500.00	6.750	100.000	100.500	101.500	100.500	5.149	3.589	1.423	2.750
Lebanon / 20-05-2019	USD	650.00	650.00	6.000	100.000	101.400	102.340	101.400	5.059	3.487	1.453	2.910
Lebanon / 28-11-2019	USD	1,500.00	1,500.00	5.450	100.000	100.450	101.550	100.450	5.218	3.648	1.919	4.787
Lebanon / 09-03-2020	USD	1,200.00	1,200.00	6.375	100.000	102.190	102.700	102.190	5.377	3.807	2.170	5.959
Lebanon / 14-04-2020	USD	700.00	700.00	5.800	100.000	100.150	101.400	100.150	5.733	4.029	2.274	6.455
Lebanon / 19-06-2020	USD	600.00	600.00	6.150	100.000	101.000	102.000	101.000	5.734	4.036	2.375	7.120
Lebanon / 12-04-2021	USD	2,092.47	2,092.47	8.250	100.000	107.177	107.500	107.177	5.928	4.224	3.005	11.130
Lebanon / 27-05-2022	USD	500.00	500.00	6.250	100.000	100.250	101.250	100.250	6.185	4.187	3.849	18.220
Lebanon / 04-10-2022	USD	1,540.00	1,540.00	6.100	100.000	99.950	100.720	99.950	6.112	4.109	4.104	20.722
Lebanon / 27-01-2023	USD	1,100.00	1,100.00	6.000	100.000	98.410	98.650	98.410	6.358	4.356	4.378	23.280
Lebanon / 26-05-2023	USD	500.00	500.00	6.400	100.000	100.000	101.000	100.000	6.398	4.401	4.526	25.290
Lebanon / 22-04-2024	USD	700.00	700.00	6.650	100.000	100.180	100.200	100.180	6.615	4.400	5.205	32.950
Lebanon / 04-11-2024	USD	500.00	538.47	6.250	100.000	97.900	98.680	97.900	6.628	4.413	5.435	36.941
Lebanon / 03-12-2024	USD	250.00	250.00	7.000	100.000	101.364	102.251	101.364	6.753	4.537	5.405	36.812
Lebanon / 26-02-2025	USD	800.00	800.00	6.200	100.000	96.750	97.300	96.750	6.767	4.558	5.731	40.387
Lebanon / 12-06-2025	USD	800.00	800.00	6.250	100.000	97.000	99.000	97.000	6.758	4.557	5.837	42.560
Lebanon / 27-11-2026	USD	1,600.00	1,600.00	6.600	100.000	97.700	98.950	97.700	6.944	4.586	6.551	55.074
Lebanon / 23-03-2027	USD	1,250.00	1,250.00	6.850	100.000	99.550	99.700	99.550	6.915	4.550	6.810	58.750
Lebanon / 29-11-2027	USD	1,000.00	1,000.00	6.750	100.000	98.420	99.410	98.420	6.969	4.604	7.024	64.310
Lebanon / 03-11-2028	USD	500.00	893.20	6.650	100.000	96.790	97.050	96.790	7.074	4.707	7.419	73.023
Lebanon / 25-05-2029	USD	1,000.00	1,000.00	6.850	100.000	97.750	98.750	97.750	7.137	4.805	7.663	78.360
Lebanon / 26-02-2030	USD	1,400.00	1,400.00	6.650	100.000	95.730	96.780	95.730	7.176	4.814	8.145	87.781
Lebanon / 22-04-2031	USD	300.00	300.00	7.000	100.000	97.800	99.200	97.800	7.258	4.897	8.593	98.890
Lebanon / 23-03-2032	USD	1,000.00	1,000.00	7.000	100.000	96.950	97.650	96.950	7.345	4.981	8.847	106.967
Lebanon / 02-11-2035	USD	600.00	600.00	7.050	100.000	96.500	96.650	96.500	7.405	5.038	9.635	137.402
Lebanon / 23-03-2037	USD	750.00	750.00	7.250	100.000	97.000	97.950	97.000	7.546	5.181	10.149	151.704
TOTAL PUBLIC SECTOR EUROBONDS		29,440.347	26,202.38									

EURO CDS

Not Available

LEBANESE PRIVATE SECTOR EUROBONDS

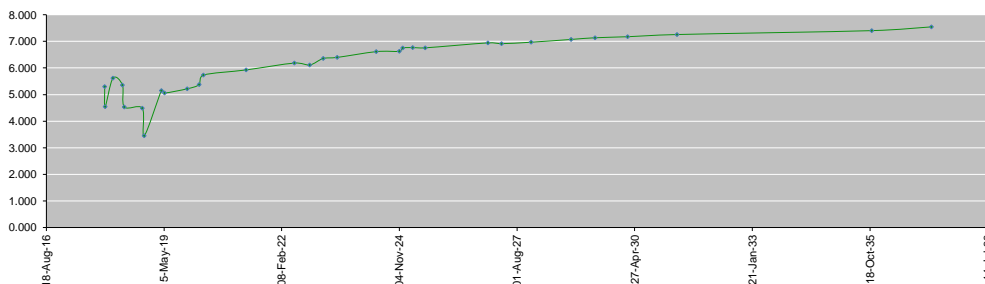
MATURITY	SIZE MM	TYPE	COUPON	Issue P.	BID \$	Ask \$	MID. P	YIELD	SPREAD	DURATION	CONVEXITY
BANK MED S.A.L/14-12-2017	USD 500	Euro CD	5.38	99.46	100.56	100.58	100.56	1.27	0.17	0.14	0.04
BANK BYBLOS S.A.L/21-06-2021	USD 300	Note	7	100	101.60	101.92	101.60	6.50	4.80	3.13	12.17

World Yields in Native Terms	O/N	3 Months	6 Months	9 Months	1 Year	2 Years	3 Years	5 Years	7 Years	10 Years	30 Years
EUR	-	-0.82	-0.85	-0.72	-0.74	-0.71	-0.64	-0.27	-0.02	0.45	1.25
U.S.A	-	1.10	1.26	--	1.41	1.57	1.71	2.00	2.22	2.37	2.89
U.K	-	0.29	0.40	--	0.41	0.43	0.53	0.76	0.99	1.32	1.89
Japan	-	-0.16	-0.12	-0.09	-0.14	-0.13	-0.10	-0.08	-0.02	0.07	0.89

Libor	USD	EUR	JPY	GBP
1 Months	1.24	-0.41	-0.02	0.31
2 Months	1.29	-0.39	-0.02	0.34
3 Months	1.36	-0.38	-0.04	0.39
6 Months	1.55	-0.31	0.00	0.53
1 Year	1.83	-0.22	0.11	0.74

Spot Rates	Bid	Ask
Lebanese Pound	1505.50	1510.50
Euro	1.18	1.1807
British Sterling Pound	1.32	1.3179
Japanese Yen	113.23	113.2600
Gold	1283.72	1283.84

Lebanese Republic USD Eurobonds Yield Curve



Disclaimer: The Capital Markets Authority (CMA) publishes reports for general information purposes only. However, under no circumstances the CMA will accept any responsibility or liability in connection with the use of the information provided in these reports or on this website.

Contact us by email: research@cma.gov.lb