

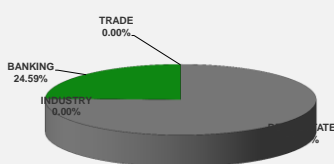
LISTED COMPANIES	LISTED SHARES	MARKET CAP.	TOTAL ORDINARY SHARES	PREFERRED SHARES	PREFERRED SHARES ISSUE PRICE	TOTAL MARKET CAP.	CUR.	TRADED VOLUME	TRADED VALUE	CLOSING PRICE	OPEN PRICE	HIGH PRICE	LOW PRICE	PREVIOUS PRICE
	(MM)	(MM \$)	(MM)	(MM)	USD	(MM \$)								
SOLIDERE A	100.00	808.00	100.00			808.00	USD	90,746	726,013	8.08	8.00	8.10	7.91	8.00
SOLIDERE B	65.00	519.35	65.00			519.35	USD	34,741	278,005	7.99	8.00	8.02	7.92	7.83
BQ.LIB. POUR LE COMMERCE	51.03	47.46	152.70			142.01	USD	-	-	0.93	-	-	-	0.93
BQ.LIB. POUR LE COMMERCE PEF. "B"	0.55	55.00		0.55		55.00	USD	-	-	100.00	-	-	-	100.00
BQ.LIB. POUR LE COMMERCE PEF. "C"	0.35	35.00		0.35		35.00	USD	-	-	100.00	-	-	-	100.00
BQ.LIB. POUR LE COMMERCE PEF. "D"	0.75	75.00		0.75		75.00	USD	-	-	100.00	-	-	-	100.00
BANQUE AUDI	399.75	2326.54	399.75			2326.54	USD	100	582	5.82	5.82	5.82	5.82	5.85
BANQUE AUDI GDR	116.24	696.27				696.27	USD	2,800	16,772	5.99	5.99	5.99	5.99	5.95
BANQUE AUDI PREFERRED "G"	1.50	152.25		1.50	100.00	152.25	USD	-	-	101.50	-	-	-	101.50
BANQUE AUDI PREFERRED "H"	0.75	75.90		0.75	100.00	75.90	USD	-	-	101.20	-	-	-	101.20
BANQUE AUDI PREFERRED "I"	2.50	255.00		2.50	100.00	255.00	USD	-	-	102.00	-	-	-	102.00
BANK OF BEIRUT	16.82	316.26	50.47			948.79	USD	-	-	18.80	-	-	-	18.80
BANK OF BEIRUT PRIORITY	4.76	100.00				100.00	USD	-	-	21.00	-	-	-	21.00
BANK OF BEIRUT PREFERRED SHARES "H"	5.40	136.89		5.40	25.00	136.89	USD	-	-	25.35	-	-	-	25.35
BANK OF BEIRUT PREFERRED SHARES "I"	5.00	127.50		5.00	25.00	127.50	USD	-	-	25.50	-	-	-	25.50
BANK OF BEIRUT PREFERRED SHARES "J"	3.00	76.05		3.00	25.00	76.05	USD	-	-	25.35	-	-	-	25.35
BANK OF BEIRUT PREFERRED SHARES "K"	4.00	101.40		4.00	25.00	101.40	USD	-	-	25.35	-	-	-	25.35
BYBLOS BANK	565.52	916.13	565.52			916.13	USD	25,000	40,500	1.62	1.62	1.62	1.62	1.63
BYBLOS BANK GDR	1.31	104.73				104.73	USD	-	-	80.00	-	-	-	80.00
BYBLOS BANK PREFERRED SHARES 2008	2.00	204.00		2.00	100.00	204.00	USD	-	-	102.00	-	-	-	102.00
BYBLOS BANK PREFERRED SHARES 2009	2.00	204.20		2.00	96.00	204.20	USD	1,340	136,814	102.10	102.10	102.10	102.10	102.00
BQ.EUROPEENNE PR.M.O	51.40	66.82	62.00			80.60	USD	-	-	1.30	-	-	-	1.30
BQ.EUROPEENNE PR.M.O PREFERRED 20	0.35	35.00		0.35	100.00	35.00	USD	-	-	100.00	-	-	-	100.00
BLOM BANK GDR	73.90	923.70				923.70	USD	10,682	133,525	12.50	12.50	12.50	12.50	12.50
BLOM BANK	215.00	2494.00	215.00			2494.00	USD	1,000	11,600	11.60	11.60	11.60	11.60	11.60
RASAMNY-YOUNIS MOTORS CO	10.92	35.49	27.30			88.73	USD	-	-	3.25	-	-	-	3.25
HOLCIM Liban	19.52	257.61	19.52			257.61	USD	-	-	13.20	-	-	-	13.20
STE DES CIMENTS BLANCS B	6.00	21.00	6.00			21.00	USD	-	-	3.50	-	-	-	3.50
STE DES CIMENTS BLANCS N	3.00	5.46	3.00			5.46	USD	-	-	1.82	-	-	-	1.82

TOTAL EXECUTED	1,728.31	11,172.01	1,666.25	11,966.10	166,409	\$1,343,811
Official USD Closing	1507.5					

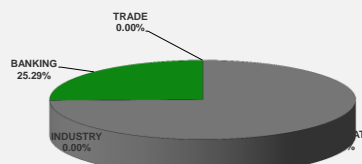
LEBANESE GLOBAL DEPOSITARY RECEIPTS	SHARES MM	BID \$	ASK \$	MID PRICE \$
BLOM BANK	73.90	12.50	12.55	12.53
BYBLOS BANK	1.31	77.00	0.00	77.00
AUDI BANK	116.24	5.95	6.00	5.98

STOCK INDEX	VALUE	PREVIOUS VALUE	% OF CHANGE
MARKET VALUE WEIGHTED INDEX	87.49	86.67	0.95%
NUMBER OF TRANSACTIONS	53		

BEIRUT STOCK EXCHANGE DAILY TRADING VOLUME



BEIRUT STOCK EXCHANGE DAILY TRADING VALUE \$



Disclaimer: The Capital Markets Authority (CMA) publishes reports for general information purposes only. However, under no circumstances the CMA will accept any responsibility or liability in connection with the use of the information provided in these reports or on this website.

MATURITY	CURRENCY	ISSUED AMOUNT (MM)	OUTSTANDING AMOUNT (MM)	COUPON	ISSUE P.	BID\$	ASK\$	MID. P	YIELD	SPREAD	DURATION	CONVEXITY
Lebanon / 27-12-2017	USD	950.00	32.50	5.000	100.000	99.935	99.952	99.935	5.299	4.182	0.168	0.056
Lebanon / 31-12-2017	USD	2,007.51	100.38	4.000	100.000	99.750	100.250	99.750	5.351	4.180	0.176	0.062
Lebanon / 07-03-2018	USD	700.00	35.00	5.000	100.000	99.766	101.766	99.766	5.618	4.488	0.360	0.259
Lebanon / 27-05-2018	USD	200.00	20.00	5.000	100.000	99.878	101.878	99.878	5.359	3.925	0.328	0.331
Lebanon / 12-06-2018	USD	700.00	700.00	5.150	100.000	100.375	102.375	100.375	4.528	3.251	0.607	0.670
Lebanon / 12-11-2018	USD	1,025.00	1,025.00	5.150	100.000	100.750	100.800	100.750	4.405	2.979	0.986	1.482
Lebanon / 28-11-2018	EUR	445.00	445.00	5.350	100.000	102.000	103.000	102.000	3.443	4.188	1.011	2.047
Lebanon / 23-04-2019	USD	500.00	500.00	6.750	100.000	100.625	101.125	100.625	5.059	3.482	1.418	2.730
Lebanon / 20-05-2019	USD	650.00	650.00	6.000	100.000	101.375	101.875	101.375	5.073	3.492	1.446	2.890
Lebanon / 28-11-2019	USD	1,500.00	1,500.00	5.450	100.000	100.500	100.950	100.500	5.192	3.613	1.912	4.757
Lebanon / 09-03-2020	USD	1,200.00	1,200.00	6.375	100.000	101.940	102.550	101.940	5.487	3.904	2.164	5.927
Lebanon / 14-04-2020	USD	700.00	700.00	5.800	100.000	100.450	100.850	100.450	5.601	3.883	2.268	6.424
Lebanon / 19-06-2020	USD	600.00	600.00	6.150	100.000	101.125	101.625	101.125	5.683	3.965	2.368	7.090
Lebanon / 12-04-2021	USD	2,092.47	2,092.47	8.250	100.000	107.250	107.750	107.250	5.902	4.184	3.000	11.100
Lebanon / 27-05-2022	USD	500.00	500.00	6.250	100.000	100.000	100.750	100.000	6.248	4.218	3.840	18.150
Lebanon / 04-10-2022	USD	1,540.00	1,540.00	6.100	100.000	99.800	100.610	99.800	6.148	4.115	4.097	20.665
Lebanon / 27-01-2023	USD	1,100.00	1,100.00	6.000	100.000	98.500	98.550	98.500	6.338	4.306	4.373	23.230
Lebanon / 26-05-2023	USD	500.00	500.00	6.400	100.000	99.500	100.250	99.500	6.507	4.477	4.514	25.180
Lebanon / 22-04-2024	USD	700.00	700.00	6.650	100.000	100.020	100.030	100.020	6.646	4.394	5.198	32.870
Lebanon / 04-11-2024	USD	500.00	538.47	6.250	100.000	97.700	98.430	97.700	6.665	4.413	5.426	36.849
Lebanon / 03-12-2024	USD	250.00	250.00	7.000	100.000	101.450	101.900	101.450	6.738	4.485	5.398	36.733
Lebanon / 26-02-2025	USD	800.00	800.00	6.200	100.000	96.550	96.800	96.550	6.803	4.556	5.721	40.271
Lebanon / 12-06-2025	USD	800.00	800.00	6.250	100.000	96.500	96.500	96.500	6.845	4.603	5.824	42.420
Lebanon / 27-11-2026	USD	1,600.00	1,600.00	6.600	100.000	97.550	98.050	97.550	6.967	4.564	6.536	54.881
Lebanon / 23-03-2027	USD	1,250.00	1,250.00	6.850	100.000	99.320	99.330	99.320	6.948	4.540	6.799	58.604
Lebanon / 29-11-2027	USD	1,000.00	1,000.00	6.750	100.000	98.050	99.120	98.050	7.022	4.611	7.012	64.140
Lebanon / 03-11-2028	USD	500.00	893.20	6.650	100.000	96.450	96.650	96.450	7.120	4.710	7.405	72.813
Lebanon / 25-05-2029	USD	1,000.00	1,000.00	6.850	100.000	97.375	98.375	97.375	7.187	4.790	7.637	77.970
Lebanon / 26-02-2030	USD	1,400.00	1,400.00	6.650	100.000	95.500	96.250	95.500	7.205	4.800	8.130	87.529
Lebanon / 22-04-2031	USD	300.00	300.00	7.000	100.000	97.750	98.750	97.750	7.264	4.860	8.581	98.670
Lebanon / 23-03-2032	USD	1,000.00	1,000.00	7.000	100.000	96.800	97.350	96.800	7.363	4.955	8.834	106.738
Lebanon / 02-11-2035	USD	600.00	600.00	7.050	100.000	97.000	97.150	97.000	7.353	4.941	9.653	137.770
Lebanon / 23-03-2037	USD	750.00	750.00	7.250	100.000	96.800	97.250	96.800	7.566	5.160	10.122	151.104
TOTAL PUBLIC SECTOR EUROBONDS		29,438.256	26,200.28									

EURO CDS
Not Available

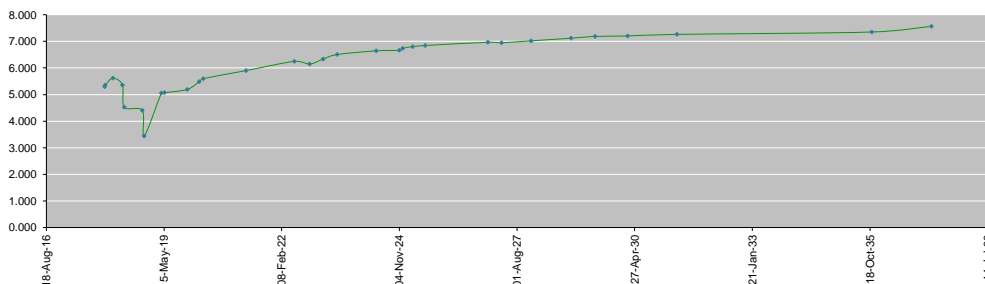
LEBANESE PRIVATE SECTOR EUROBONDS												
MATURITY	SIZE MM	TYPE	COUPON	ISSUE P.	BID \$	ASK \$	MID. P	YIELD	SPREAD	DURATION	CONVEXITY	
BANK MED S.A.L/14-12-2017	USD 500	Euro CD	5.38	99.46	100.54	100.55	100.54	1.27	0.16	0.13	0.04	
BANK BYBLOS S.A.L/21-06-2021	USD 300	Note	7	100	101.49	101.81	101.49	6.53	4.81	3.12	12.12	

World Yields in Native Terms	O/N	3 Months	6 Months	9 Months	1 Year	2 Years	3 Years	5 Years	7 Years	10 Years	30 Years
EUR	-	-0.83	-0.85	-0.72	-0.73	-0.70	-0.62	-0.25	0.00	0.48	1.27
U.S.A	-	1.13	1.28	--	1.42	1.58	1.72	2.03	2.25	2.41	2.93
U.K	-	0.31	0.43	--	0.44	0.47	0.56	0.81	1.04	1.36	1.92
Japan	-	-0.16	-0.12	-0.10	-0.14	-0.13	-0.10	-0.08	-0.03	0.07	0.87

Libor	USD	EUR	JPY	GBP
1 Month	1.24	-0.41	-0.02	0.33
2 Months	1.30	-0.39	-0.01	0.36
3 Months	1.37	-0.38	-0.04	0.40
6 Months	1.56	-0.32	0.00	0.54
1 Year	1.84	-0.22	0.12	0.75

Spot Rates	Bid	Ask
Lebanese Pound	1506.49	1513.45
Euro	1.18	1.1760
British Sterling Pound	1.32	1.3174
Japanese Yen	113.88	113.9100
Gold	1277.14	1277.26

Lebanese Republic USD Eurobonds Yield Curve



Disclaimer: The Capital Markets Authority (CMA) publishes reports for general information purposes only. However, under no circumstances the CMA will accept any responsibility or liability in connection with the use of the information provided in these reports or on this website.

Contact us by email: research@cma.gov.lb