

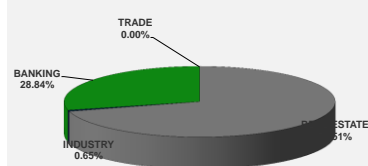
LISTED COMPANIES	LISTED SHARES	MARKET CAP.	TOTAL ORDINARY SHARES	PREFERRED SHARES	PREFERRED SHARES ISSUE PRICE	TOTAL MARKET CAP.	CUR.	TRADED VOLUME	TRADED VALUE	CLOSING PRICE	OPEN PRICE	HIGH PRICE	LOW PRICE	PREVIOUS PRICE
	(MM)	(MM \$)	(MM)	(MM)	USD	(MM \$)								
SOLIERE A	100.00	830.00	100.00			830.00	USD	145,309	1,202,883	8.30	8.00	8.30	8.00	8.25
SOLIERE B	65.00	536.25	65.00			536.25	USD	18,589	152,773	8.25	7.95	8.25	7.95	8.25
BQ.LIB. POUR LE COMMERCE	51.03	47.46	152.70			142.01	USD	-	-	0.93	-	-	-	0.93
BQ.LIB. POUR LE COMMERCE PEF. "B"	0.55	55.00		0.55		55.00	USD	-	-	100.00	-	-	-	100.00
BQ.LIB. POUR LE COMMERCE PEF. "C"	0.35	35.00		0.35		35.00	USD	-	-	100.00	-	-	-	100.00
BQ.LIB. POUR LE COMMERCE PEF. "D"	0.75	75.00		0.75		75.00	USD	-	-	100.00	-	-	-	100.00
BANQUE AUDI	399.75	2358.52	399.75			2358.52	USD	3,325	19,618	5.90	5.90	5.90	5.90	5.82
BANQUE AUDI GDR	116.24	685.80				685.80	USD	8,136	48,002	5.90	5.90	5.90	5.90	5.88
BANQUE AUDI PREFERRED "G"	1.50	152.25		1.50	100.00	152.25	USD	-	-	101.50	-	-	-	101.50
BANQUE AUDI PREFERRED "H"	0.75	75.90		0.75	100.00	75.90	USD	-	-	101.20	-	-	-	101.20
BANQUE AUDI PREFERRED "I"	2.50	254.25		2.50	100.00	254.25	USD	-	-	101.70	-	-	-	101.70
BANK OF BEIRUT	16.82	316.26	50.47			948.79	USD	-	-	18.80	-	-	-	18.80
BANK OF BEIRUT PRIORITY	4.76	100.00				100.00	USD	-	-	21.00	-	-	-	21.00
BANK OF BEIRUT PREFERRED SHARES "H"	5.40	137.70		5.40	25.00	137.70	USD	3,975	101,363	25.50	25.50	25.50	25.50	25.35
BANK OF BEIRUT PREFERRED SHARES "I"	5.00	127.50		5.00	25.00	127.50	USD	-	-	25.50	-	-	-	25.50
BANK OF BEIRUT PREFERRED SHARES "J"	3.00	76.05		3.00	25.00	76.05	USD	-	-	25.35	-	-	-	25.35
BANK OF BEIRUT PREFERRED SHARES "K"	4.00	101.40		4.00	25.00	101.40	USD	-	-	25.35	-	-	-	25.35
BYBLOS BANK	565.52	921.79	565.52			921.79	USD	3,500	5,700	1.63	1.63	1.63	1.62	1.62
BYBLOS BANK GDR	1.31	104.73				104.73	USD	-	-	80.00	-	-	-	80.00
BYBLOS BANK PREFERRED SHARES 2008	2.00	204.00		2.00	100.00	204.00	USD	-	-	102.00	-	-	-	102.00
BYBLOS BANK PREFERRED SHARES 2009	2.00	204.20		2.00	96.00	204.20	USD	-	-	102.10	-	-	-	102.10
BQ.EUROPEENNE PR.M.O	51.40	66.82	62.00			80.60	USD	-	-	1.30	-	-	-	1.30
BQ.EUROPEENNE PR.M.O PREFERRED 20	0.35	35.00		0.35	100.00	35.00	USD	-	-	100.00	-	-	-	100.00
BLOM BANK GDR	73.90	932.57				932.57	USD	5,600	70,660	12.62	12.60	12.62	12.60	12.50
BLOM BANK	215.00	2491.85	215.00			2491.85	USD	42,500	492,415	11.59	11.60	11.65	11.55	11.61
RASAMNY-YOUNIS MOTORS CO	10.92	35.49	27.30			88.73	USD	-	-	3.25	-	-	-	3.25
HOLCIM Liban	19.52	258.20	19.52			258.20	USD	1,500	19,838	13.23	13.25	13.25	13.20	13.20
STE DES CIMENTS BLANCS B	6.00	21.00	6.00			21.00	USD	-	-	3.50	-	-	-	3.50
STE DES CIMENTS BLANCS N	3.00	5.46	3.00			5.46	USD	-	-	1.82	-	-	-	1.82

TOTAL EXECUTED	1,728.31	11,245.45	1,666.25	12,039.54	232,434	\$2,113,252
Official USD Closing	1507.5					

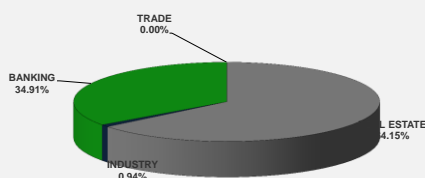
LEBANESE GLOBAL DEPOSITARY RECEIPTS	SHARES MM	BID \$	ASK \$	MID PRICE \$
BLOM BANK	73.90	12.40	12.55	12.48
BYBLOS BANK	1.31	77.00	0.00	77.00
AUDI BANK	116.24	5.85	5.90	5.88

STOCK INDEX	VALUE	PREVIOUS VALUE	% OF CHANGE
MARKET VALUE WEIGHTED INDEX	89.40	89.00	0.45%
NUMBER OF TRANSACTIONS	48		

BEIRUT STOCK EXCHANGE DAILY TRADING VOLUME



BEIRUT STOCK EXCHANGE DAILY TRADING VALUE \$



Disclaimer: The Capital Markets Authority (CMA) publishes reports for general information purposes only. However, under no circumstances the CMA will accept any responsibility or liability in connection with the use of the information provided in these reports or on this website.

MATURITY	CURRENCY	ISSUED AMOUNT (MM)	OUTSTANDING AMOUNT (MM)	COUPON	ISSUE P.	BID\$	ASK\$	MID. P	YIELD	SPREAD	DURATION	CONVEXITY
Lebanon / 27-12-2017	USD	950.00	32.50	5.000	100.000	99.939	99.954	99.939	5.298	4.276	0.157	0.049
Lebanon / 31-12-2017	USD	2,007.51	100.38	4.000	100.000	99.750	100.250	99.750	5.441	4.368	0.166	0.055
Lebanon / 07-03-2018	USD	700.00	35.00	5.000	100.000	99.773	101.773	99.773	5.615	4.535	0.349	0.244
Lebanon / 27-05-2018	USD	200.00	20.00	5.000	100.000	99.883	101.883	99.883	5.357	3.932	0.317	0.318
Lebanon / 12-06-2018	USD	700.00	700.00	5.150	100.000	100.625	102.625	100.625	4.106	2.847	0.597	0.660
Lebanon / 12-11-2018	USD	1,025.00	1,025.00	5.150	100.000	100.597	100.926	100.597	4.550	3.123	0.975	1.456
Lebanon / 28-11-2018	EUR	445.00	445.00	5.350	100.000	102.000	103.000	102.000	3.420	4.197	0.998	2.009
Lebanon / 23-04-2019	USD	500.00	500.00	6.750	100.000	100.000	101.000	100.000	5.499	3.881	1.405	2.690
Lebanon / 20-05-2019	USD	650.00	650.00	6.000	100.000	101.200	101.730	101.200	5.185	3.561	1.435	2.850
Lebanon / 28-11-2019	USD	1,500.00	1,500.00	5.450	100.000	100.000	100.425	100.000	5.448	3.825	1.898	4.697
Lebanon / 09-03-2020	USD	1,200.00	1,200.00	6.375	100.000	101.395	102.000	101.395	5.730	4.108	2.150	5.860
Lebanon / 14-04-2020	USD	700.00	700.00	5.800	100.000	99.700	100.400	99.700	5.932	4.310	2.253	6.352
Lebanon / 19-06-2020	USD	600.00	600.00	6.150	100.000	100.375	101.375	100.375	5.990	4.241	2.355	7.020
Lebanon / 12-04-2021	USD	2,092.47	2,092.47	8.250	100.000	106.125	106.443	106.125	6.247	4.496	2.982	10.980
Lebanon / 27-05-2022	USD	500.00	500.00	6.250	100.000	99.000	100.000	99.000	6.505	4.433	3.822	18.000
Lebanon / 04-10-2022	USD	1,540.00	1,540.00	6.100	100.000	98.250	99.550	98.250	6.522	4.442	4.075	20.473
Lebanon / 27-01-2023	USD	1,100.00	1,100.00	6.000	100.000	96.900	97.000	96.900	6.708	4.630	4.347	23.000
Lebanon / 26-05-2023	USD	500.00	500.00	6.400	100.000	98.000	99.000	98.000	6.836	4.764	4.489	24.950
Lebanon / 22-04-2024	USD	700.00	700.00	6.650	100.000	98.430	98.450	98.430	6.955	4.642	5.169	32.570
Lebanon / 04-11-2024	USD	500.00	538.47	6.250	100.000	96.050	96.730	96.050	6.972	4.671	5.393	36.491
Lebanon / 03-12-2024	USD	250.00	250.00	7.000	100.000	100.050	100.350	100.050	6.989	4.690	5.367	36.405
Lebanon / 26-02-2025	USD	800.00	800.00	6.200	100.000	95.150	95.400	95.150	7.057	4.753	5.691	39.935
Lebanon / 12-06-2025	USD	800.00	800.00	6.250	100.000	95.000	97.000	95.000	7.110	4.804	5.791	42.404
Lebanon / 27-11-2026	USD	1,600.00	1,600.00	6.600	100.000	95.800	96.700	95.800	7.238	4.781	6.496	54.378
Lebanon / 23-03-2027	USD	1,250.00	1,250.00	6.850	100.000	96.320	96.330	96.320	7.399	4.946	6.733	57.733
Lebanon / 29-11-2027	USD	1,000.00	1,000.00	6.750	100.000	95.500	96.120	95.500	7.390	4.927	6.942	63.190
Lebanon / 03-11-2028	USD	500.00	893.20	6.650	100.000	94.400	94.450	94.400	7.403	4.951	7.342	71.907
Lebanon / 25-05-2029	USD	1,000.00	1,000.00	6.850	100.000	94.500	95.500	94.500	7.571	5.117	7.551	76.700
Lebanon / 26-02-2030	USD	1,400.00	1,400.00	6.650	100.000	93.000	93.900	93.000	7.530	5.074	8.052	86.297
Lebanon / 22-04-2031	USD	300.00	300.00	7.000	100.000	95.050	96.450	95.050	7.593	5.132	8.494	97.200
Lebanon / 23-03-2032	USD	1,000.00	1,000.00	7.000	100.000	94.700	95.250	94.700	7.611	5.157	8.753	105.294
Lebanon / 02-11-2035	USD	600.00	600.00	7.050	100.000	94.050	94.400	94.050	7.665	5.207	9.508	134.813
Lebanon / 23-03-2037	USD	750.00	750.00	7.250	100.000	94.250	94.750	94.250	7.830	5.373	9.985	148.097
TOTAL PUBLIC SECTOR EUROBONDS		29,431.002	26,193.03									

EURO CDS

Not Available

LEBANESE PRIVATE SECTOR EUROBONDS

MATURITY	SIZE MM	TYPE	COUPON	ISSUE P.	BID \$	ASK \$	MID. P	YIELD	SPREAD	DURATION	CONVEXITY
BANK MED S.A.L/14-12-2017	USD 500	Euro CD	5.38	99.46	100.48	100.49	100.48	1.30	0.17	0.12	0.03
BANK BYBLOS S.A.L/21-06-2021	USD 300	Note	7	100	101.34	101.66	101.34	6.58	4.83	3.11	12.05

World Yields in Native Terms

	O/N	3 Months	6 Months	9 Months	1 Year	2 Years	3 Years	5 Years	7 Years	10 Years	30 Years
EUR	-	-0.84	-0.74	-0.76	-0.77	-0.74	-0.61	-0.32	-0.05	0.43	1.31
U.S.A	-	1.10	1.28	--	1.43	1.63	1.76	2.08	2.31	2.46	2.96
U.K	-	0.33	0.45	--	0.47	0.48	0.57	0.82	1.05	1.38	1.94
Japan	-	-0.15	-0.13	-0.10	-0.15	-0.15	-0.11	-0.09	-0.03	0.07	0.88

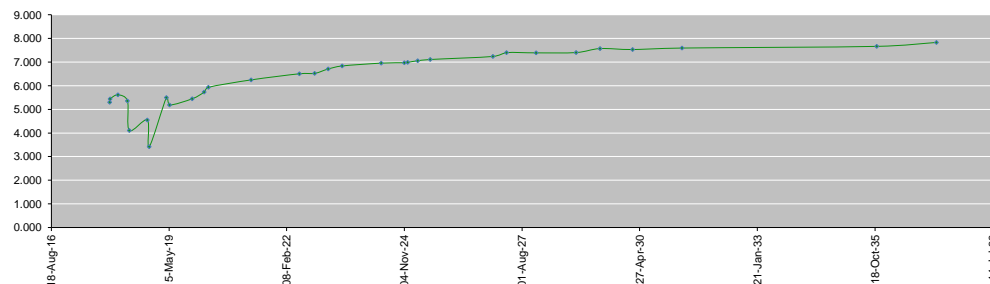
Libor

	USD	EUR	JPY	GBP
1 Month	1.24	-0.40	-0.03	0.36
2 Months	1.31	-0.39	-0.02	0.39
3 Months	1.38	-0.38	-0.04	0.42
6 Months	1.56	-0.32	0.00	0.55
1 Year	1.84	-0.23	0.11	0.77

Spot Rates

	Bid	Ask
Lebanese Pound	1505.20	1510.20
Euro	1.16	1.1597
British Sterling Pound	1.31	1.3088
Japanese Yen	114.26	114.2900
Gold	1265.66	1265.79

Lebanese Republic USD Eurobonds Yield Curve



Disclaimer: The Capital Markets Authority (CMA) publishes reports for general information purposes only. However, under no circumstances the CMA will accept any responsibility or liability in connection with the use of the information provided in these reports or on this website.

Contact us by email: research@cma.gov.lb