

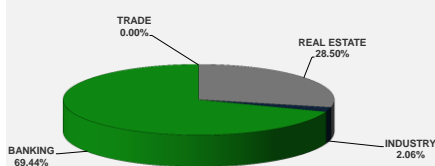
LISTED COMPANIES	LISTED SHARES	MARKET CAP.	TOTAL ORDINARY SHARES	PREFERRED SHARES	PREFERRED SHARES ISSUE PRICE	TOTAL MARKET CAP.	CUR.	TRADED VOLUME	TRADED VALUE	CLOSING PRICE	OPEN PRICE	HIGH PRICE	LOW PRICE	PREVIOUS PRICE
	(MM)	(MM \$)	(MM)	(MM)	USD	(MM \$)								
SOLIDERE A	100.00	813.00	100.00			813.00	USD	82,266	666,419	8.13	8.05	8.30	8.05	8.07
SOLIDERE B	65.00	529.75	65.00			529.75	USD	1,690	13,766	8.15	8.03	8.25	8.03	8.25
BQ.LIB. POUR LE COMMERCE	51.03	47.46	152.70			142.01	USD	-	-	0.93	-	-	-	0.93
BQ.LIB. POUR LE COMMERCE PEF. "B"	0.55	55.00		0.55		55.00	USD	-	-	100.00	-	-	-	100.00
BQ.LIB. POUR LE COMMERCE PEF. "C"	0.35	35.00		0.35		35.00	USD	-	-	100.00	-	-	-	100.00
BQ.LIB. POUR LE COMMERCE PEF. "D"	0.75	75.00		0.75		75.00	USD	-	-	100.00	-	-	-	100.00
BANQUE AUDI	399.75	2358.52	399.75			2358.52	USD	-	-	5.90	-	-	-	5.90
BANQUE AUDI GDR	116.24	685.80				685.80	USD	-	-	5.90	-	-	-	5.90
BANQUE AUDI PREFERRED "G"	1.50	152.25		1.50	100.00	152.25	USD	-	-	101.50	-	-	-	101.50
BANQUE AUDI PREFERRED "H"	0.75	75.90		0.75	100.00	75.90	USD	-	-	101.20	-	-	-	101.20
BANQUE AUDI PREFERRED "I"	2.50	254.25		2.50	100.00	254.25	USD	-	-	101.70	-	-	-	101.70
BANK OF BEIRUT	16.82	316.26	50.47			948.79	USD	-	-	18.80	-	-	-	18.80
BANK OF BEIRUT PRIORITY	4.76	100.00				100.00	USD	-	-	21.00	-	-	-	21.00
BANK OF BEIRUT PREFERRED SHARES "H"	5.40	137.70		5.40	25.00	137.70	USD	-	-	25.50	-	-	-	25.50
BANK OF BEIRUT PREFERRED SHARES "I"	5.00	127.50		5.00	25.00	127.50	USD	-	-	25.50	-	-	-	25.50
BANK OF BEIRUT PREFERRED SHARES "J"	3.00	76.05		3.00	25.00	76.05	USD	-	-	25.35	-	-	-	25.35
BANK OF BEIRUT PREFERRED SHARES "K"	4.00	101.40		4.00	25.00	101.40	USD	-	-	25.35	-	-	-	25.35
BYBLOS BANK	565.52	910.48	565.52			910.48	USD	194,560	313,180	1.61	1.61	1.61	1.60	1.62
BYBLOS BANK GDR	1.31	104.73				104.73	USD	-	-	80.00	-	-	-	80.00
BYBLOS BANK PREFERRED SHARES 2008	2.00	204.00		2.00	100.00	204.00	USD	-	-	102.00	-	-	-	102.00
BYBLOS BANK PREFERRED SHARES 2009	2.00	204.20		2.00	96.00	204.20	USD	-	-	102.10	-	-	-	102.10
BQ.EUROPEENNE PR.M.O	51.40	66.82	62.00			80.60	USD	-	-	1.30	-	-	-	1.30
BQ.EUROPEENNE PR.M.O PREFERRED 20	0.35	35.00		0.35	100.00	35.00	USD	-	-	100.00	-	-	-	100.00
BLOM BANK GDR	73.90	931.09				931.09	USD	10,000	126,000	12.60	12.60	12.60	12.60	12.60
BLOM BANK	215.00	2491.85	215.00			2491.85	USD	-	-	11.59	-	-	-	11.59
RASAMNY-YOUNIS MOTORS CO	10.92	35.49	27.30			88.73	USD	-	-	3.25	-	-	-	3.25
HOLCIM Liban	19.52	268.15	19.52			268.15	USD	6,061	83,265	13.74	13.50	14.00	13.50	13.23
STE DES CIMENTS BLANCS B	6.00	21.00	6.00			21.00	USD	-	-	3.50	-	-	-	3.50
STE DES CIMENTS BLANCS N	3.00	5.46	3.00			5.46	USD	-	-	1.82	-	-	-	1.82

TOTAL EXECUTED	1,728.31	11,219.12	1,666.25	12,013.21	294,577	\$1,202,630
Official USD Closing	1507.5					

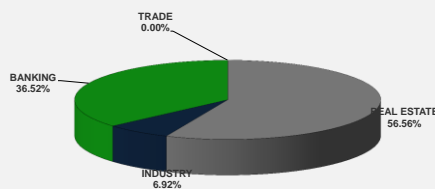
LEBANESE GLOBAL DEPOSITARY RECEIPTS	SHARES MM	BID \$	ASK \$	MID PRICE \$
BLOM BANK	73.90	12.40	12.70	12.55
BYBLOS BANK	1.31	77.00	0.00	77.00
AUDI BANK	116.24	5.95	6.00	5.98

STOCK INDEX	VALUE	PREVIOUS VALUE	% OF CHANGE
MARKET VALUE WEIGHTED INDEX	88.28	88.31	-0.03%
NUMBER OF TRANSACTIONS	35		

BEIRUT STOCK EXCHANGE DAILY TRADING VOLUME



BEIRUT STOCK EXCHANGE DAILY TRADING VALUE \$



Disclaimer: The Capital Markets Authority (CMA) publishes reports for general information purposes only. However, under no circumstances the CMA will accept any responsibility or liability in connection with the use of the information provided in these reports or on this website.

MATURITY	CURRENCY	ISSUED AMOUNT (MM)	OUTSTANDING AMOUNT (MM)	COUPON	ISSUE P.	BID\$	ASK\$	MID. P	YIELD	SPREAD	DURATION	CONVEXITY
Lebanon / 27-12-2017	USD	950.00	32.50	5.000	100.000	99.947	99.962	99.947	5.258	4.202	0.152	0.046
Lebanon / 31-12-2017	USD	2,007.51	100.38	4.000	100.000	99.750	100.250	99.750	5.491	4.369	0.160	0.051
Lebanon / 07-03-2018	USD	700.00	35.00	5.000	100.000	99.789	101.789	99.789	5.577	4.464	0.344	0.237
Lebanon / 27-05-2018	USD	200.00	20.00	5.000	100.000	99.898	101.898	99.898	5.315	3.909	0.312	0.313
Lebanon / 12-06-2018	USD	700.00	700.00	5.150	100.000	100.625	102.625	100.625	4.096	2.822	0.591	0.650
Lebanon / 12-11-2018	USD	1,025.00	1,025.00	5.150	100.000	100.620	100.780	100.620	4.524	3.105	0.969	1.442
Lebanon / 28-11-2018	EUR	445.00	445.00	5.350	100.000	101.750	102.750	101.750	3.648	4.404	0.990	1.984
Lebanon / 23-04-2019	USD	500.00	500.00	6.750	100.000	100.250	101.250	100.250	5.320	3.746	1.401	2.680
Lebanon / 20-05-2019	USD	650.00	650.00	6.000	100.000	100.750	101.750	100.750	5.486	3.906	1.428	2.820
Lebanon / 28-11-2019	USD	1,500.00	1,500.00	5.450	100.000	100.250	100.750	100.250	5.319	3.739	1.894	4.681
Lebanon / 09-03-2020	USD	1,200.00	1,200.00	6.375	100.000	101.780	101.970	101.780	5.553	3.975	2.146	5.839
Lebanon / 14-04-2020	USD	700.00	700.00	5.800	100.000	99.875	100.875	99.875	5.854	4.276	2.250	6.334
Lebanon / 19-06-2020	USD	600.00	600.00	6.150	100.000	100.500	101.500	100.500	5.938	4.240	2.350	7.000
Lebanon / 12-04-2021	USD	2,092.47	2,092.47	8.250	100.000	106.252	106.570	106.252	6.204	4.502	2.977	10.950
Lebanon / 27-05-2022	USD	500.00	500.00	6.250	100.000	99.250	100.250	99.250	6.441	4.440	3.818	17.980
Lebanon / 04-10-2022	USD	1,540.00	1,540.00	6.100	100.000	99.050	99.450	99.050	6.328	4.326	4.073	20.453
Lebanon / 27-01-2023	USD	1,100.00	1,100.00	6.000	100.000	97.250	98.250	97.250	6.627	4.628	4.349	23.010
Lebanon / 26-05-2023	USD	500.00	500.00	6.400	100.000	98.500	99.500	98.500	6.726	4.725	4.489	24.950
Lebanon / 22-04-2024	USD	700.00	700.00	6.650	100.000	98.750	99.750	98.750	6.892	4.672	5.173	32.610
Lebanon / 04-11-2024	USD	500.00	538.47	6.250	100.000	96.500	97.500	96.500	6.888	4.665	5.396	36.517
Lebanon / 03-12-2024	USD	250.00	250.00	7.000	100.000	100.000	101.000	100.000	6.998	4.777	5.366	36.387
Lebanon / 26-02-2025	USD	800.00	800.00	6.200	100.000	95.250	96.250	95.250	7.040	4.818	5.692	39.941
Lebanon / 12-06-2025	USD	800.00	800.00	6.250	100.000	95.250	97.250	95.250	7.066	4.840	5.790	42.020
Lebanon / 27-11-2026	USD	1,600.00	1,600.00	6.600	100.000	96.375	97.375	96.375	7.149	4.771	6.503	54.450
Lebanon / 23-03-2027	USD	1,250.00	1,250.00	6.850	100.000	97.750	98.750	97.750	7.182	4.812	6.763	58.122
Lebanon / 29-11-2027	USD	1,000.00	1,000.00	6.750	100.000	96.400	96.500	96.400	7.259	4.890	6.950	63.300
Lebanon / 03-11-2028	USD	500.00	893.20	6.650	100.000	95.250	96.250	95.250	7.285	4.913	7.369	72.289
Lebanon / 25-05-2029	USD	1,000.00	1,000.00	6.850	100.000	95.750	96.750	95.750	7.402	5.032	7.579	77.100
Lebanon / 26-02-2030	USD	1,400.00	1,400.00	6.650	100.000	94.000	95.000	94.000	7.399	5.028	8.076	86.667
Lebanon / 22-04-2031	USD	300.00	300.00	7.000	100.000	96.250	97.250	96.250	7.445	5.075	8.520	97.620
Lebanon / 23-03-2032	USD	1,000.00	1,000.00	7.000	100.000	95.500	96.500	95.500	7.516	5.146	8.782	105.811
Lebanon / 02-11-2035	USD	600.00	600.00	7.050	100.000	94.750	95.750	94.750	7.590	5.218	9.552	135.704
Lebanon / 23-03-2037	USD	750.00	750.00	7.250	100.000	95.750	96.750	95.750	7.674	5.303	10.067	149.926
TOTAL PUBLIC SECTOR EUROBONDS		29,432.871	26,194.90									

EURO CDS
Not Available

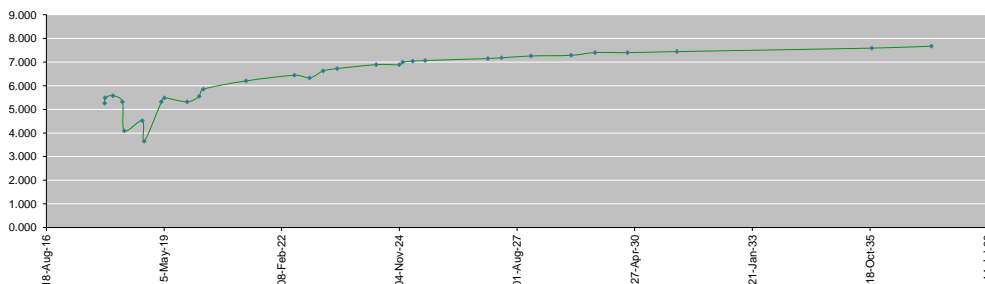
LEBANESE PRIVATE SECTOR EUROBONDS												
MATURITY	SIZE MM	TYPE	COUPON	ISSUE P.	BID \$	ASK \$	MID. P	YIELD	SPREAD	DURATION	CONVEXITY	
BANK MED S.A.L/14-12-2017	USD 500	Euro CD	5.38	99.46	100.46	100.47	100.46	1.30	0.35	0.12	0.03	
BANK BYBLOS S.A.L/21-06-2021	USD 300	Note	7	100	101.58	101.90	101.58	6.50	4.80	3.11	12.02	

World Yields in Native Terms	O/N	3 Months	6 Months	9 Months	1 Year	2 Years	3 Years	5 Years	7 Years	10 Years	30 Years
EUR	-	-0.83	-0.74	-0.73	-0.74	-0.75	-0.62	-0.34	-0.08	0.38	1.24
U.S.A	-	1.15	1.28	--	1.42	1.58	1.71	2.00	2.22	2.37	2.87
U.K	-	0.33	0.46	--	0.47	0.46	0.53	0.78	1.02	1.34	1.90
Japan	-	-0.15	-0.13	-0.10	-0.16	-0.16	-0.12	-0.10	-0.03	0.07	0.87

Libor	USD	EUR	JPY	GBP
1 Month	1.24	-0.40	-0.02	0.39
2 Months	1.32	-0.39	-0.04	0.40
3 Months	1.38	-0.38	-0.04	0.43
6 Months	1.57	-0.32	0.00	0.56
1 Year	1.84	-0.23	0.11	0.77

Spot Rates	Bid	Ask
Lebanese Pound	1505.60	1510.60
Euro	1.16	1.1639
British Sterling Pound	1.32	1.3244
Japanese Yen	113.42	113.4600
Gold	1272.35	1272.44

Lebanese Republic USD Eurobonds Yield Curve



Disclaimer: The Capital Markets Authority (CMA) publishes reports for general information purposes only. However, under no circumstances the CMA will accept any responsibility or liability in connection with the use of the information provided in these reports or on this website.

Contact us by email: research@cma.gov.lb