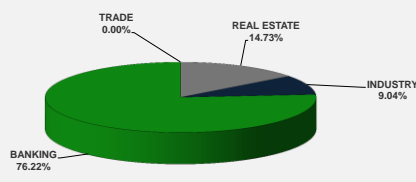


LISTED COMPANIES	LISTED SHARES	MARKET CAP.	TOTAL ORDINARY SHARES	PREFERRED SHARES	PREFERRED SHARES ISSUE PRICE	TOTAL MARKET CAP.	CUR.	TRADED VOLUME	TRADED VALUE	CLOSING PRICE	OPEN PRICE	HIGH PRICE	LOW PRICE	PREVIOUS PRICE
	(MM)	(MM \$)	(MM)	(MM)	USD	(MM \$)								
SOLIDERE A	100.00	759.00	100.00			759.00	USD	10,183	77,524	7.59	7.54	7.69	7.54	7.53
SOLIDERE B	65.00	488.15	65.00			488.15	USD	628	4,716	7.51	7.51	7.51	7.51	7.40
BQ.LIB. POUR LE COMMERCE	71.03	66.06	152.70			142.01	USD	-	-	0.93	-	-	-	0.93
BQ.LIB. POUR LE COMMERCE PEF. "B"	0.55	55.00		0.55		55.00	USD	-	-	100.00	-	-	-	100.00
BQ.LIB. POUR LE COMMERCE PEF. "C"	0.35	35.00		0.35		35.00	USD	-	-	100.00	-	-	-	100.00
BQ.LIB. POUR LE COMMERCE PEF. "D"	0.75	75.00		0.75		75.00	USD	-	-	100.00	-	-	-	100.00
BANQUE AUDI	399.75	2338.53	399.75			2338.53	USD	4,400	25,740	5.85	5.85	5.85	5.85	5.90
BANQUE AUDI GDR	119.92	701.56				701.56	USD	-	-	5.85	-	-	-	5.85
BANQUE AUDI PREFERRED "G"	1.50	152.25		1.50	100.00	152.25	USD	-	-	101.50	-	-	-	101.50
BANQUE AUDI PREFERRED "H"	0.75	75.90		0.75	100.00	75.90	USD	-	-	101.20	-	-	-	101.20
BANQUE AUDI PREFERRED "I"	2.50	255.00		2.50	100.00	255.00	USD	-	-	102.00	-	-	-	102.00
BANK OF BEIRUT	17.75	333.63	50.47			948.79	USD	628	11,806	18.80	18.80	18.80	18.80	18.80
BANK OF BEIRUT PRIORITY	4.76	100.00				100.00	USD	-	-	21.00	-	-	-	21.00
BANK OF BEIRUT PREFERRED SHARES "H"	5.40	137.70		5.40	25.00	137.70	USD	-	-	25.50	-	-	-	25.50
BANK OF BEIRUT PREFERRED SHARES "I"	5.00	127.50		5.00	25.00	127.50	USD	-	-	25.50	-	-	-	25.50
BANK OF BEIRUT PREFERRED SHARES "J"	3.00	76.05		3.00	25.00	76.05	USD	-	-	25.35	-	-	-	25.35
BANK OF BEIRUT PREFERRED SHARES "K"	4.00	101.40		4.00	25.00	101.40	USD	-	-	25.35	-	-	-	25.35
BYBLOS BANK	565.52	921.79	565.52			921.79	USD	-	-	1.63	-	-	-	1.63
BYBLOS BANK GDR	1.31	101.19				101.19	USD	-	-	77.30	-	-	-	77.30
BYBLOS BANK PREFERRED SHARES 2008	2.00	205.00		2.00	100.00	205.00	USD	69	7,072	102.50	102.50	102.50	102.50	102.00
BYBLOS BANK PREFERRED SHARES 2009	2.00	204.40		2.00	96.00	204.40	USD	313	31,989	102.20	102.20	102.20	102.20	102.10
BQ.EUROPEENNE PR.M.O	51.40	66.82	62.00			80.60	USD	-	-	1.30	-	-	-	1.30
BQ.EUROPEENNE PR.M.O PREFERRED 20	0.35	34.91		0.35	100.00	34.91	USD	-	-	99.75	-	-	-	99.75
BLOM BANK GDR	73.90	894.88				894.88	USD	12,522	151,595	12.11	12.25	12.25	12.10	12.29
BLOM BANK	215.00	2365.00	215.00			2365.00	USD	38,000	418,000	11.00	11.00	11.00	11.00	11.30
RASAMNY-YOUNIS MOTORS CO	10.92	35.49	27.30			88.73	USD	-	-	3.25	-	-	-	3.25
HOLCIM Liban	19.52	287.86	19.52			287.86	USD	6,635	97,866	14.75	14.75	14.75	14.75	14.70
STE DES CIMENTS BLANCS N	9.00	16.38	3.00			5.46	USD	-	-	1.82	-	-	-	1.82
TOTAL EXECUTED	1,752.92	11,011.46	1,660.25			11,758.66		73,378	\$826,308					
Official USD Closing		1507.5												

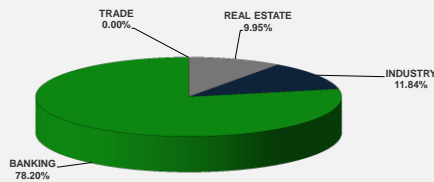
LEBANESE GLOBAL DEPOSITORY RECEIPTS	SHARES MM	BID \$	ASK \$	MID PRICE \$
BLOM BANK	73.90	12.10	12.15	12.13
BYBLOS BANK	1.31	77.00	0.00	77.00
AUDI BANK	116.24	5.85	5.96	5.91

STOCK INDEX	VALUE	PREVIOUS VALUE	% OF CHANGE
MARKET VALUE WEIGHTED INDEX	82.95	82.89	0.08%
NUMBER OF TRANSACTIONS	23		

BEIRUT STOCK EXCHANGE DAILY TRADING VOLUME



BEIRUT STOCK EXCHANGE DAILY TRADING VALUE \$



Disclaimer: The Capital Markets Authority (CMA) publishes reports for general information purposes only. However, under no circumstances the CMA will accept any responsibility or liability in connection with the use of the information provided in these reports or on this website.

MATURITY	CURRENCY	ISSUED AMOUNT (MM)	OUTSTANDING AMOUNT (MM)	COUPON	ISSUE P.	BID\$	ASK\$	MID. P	YIELD	SPREAD	DURATION	CONVEXITY
Lebanon / 27-12-2017	USD	950.00	32.50	5.000	100.000	99.942	99.955	99.942	5.349	4.393	0.130	0.034
Lebanon / 31-12-2017	USD	2,007.51	100.38	4.000	100.000	99.908	99.921	99.908	4.600	3.565	0.138	0.038
Lebanon / 07-03-2018	USD	700.00	35.00	5.000	100.000	98.000	98.250	98.000	11.281	10.128	0.314	0.197
Lebanon / 27-05-2018	USD	200.00	20.00	5.000	100.000	98.000	98.250	98.000	12.117	7.505	0.271	0.258
Lebanon / 12-06-2018	USD	700.00	700.00	5.150	100.000	97.875	97.875	97.875	8.919	7.606	0.556	0.580
Lebanon / 12-11-2018	USD	1,025.00	1,025.00	5.150	100.000	97.360	97.800	97.360	7.933	6.415	0.932	1.345
Lebanon / 28-11-2018	EUR	445.00	445.00	5.350	100.000	99.000	101.000	99.000	6.357	7.099	0.948	1.842
Lebanon / 23-04-2019	USD	500.00	500.00	6.750	100.000	96.250	97.250	96.250	8.289	6.769	1.359	2.530
Lebanon / 20-05-2019	USD	650.00	650.00	6.000	100.000	96.800	98.000	96.800	8.270	6.637	1.386	2.680
Lebanon / 28-11-2019	USD	1,500.00	1,500.00	5.450	100.000	94.850	95.850	94.850	8.229	6.596	1.843	4.455
Lebanon / 09-03-2020	USD	1,200.00	1,200.00	6.375	100.000	96.350	97.300	96.350	8.119	6.489	2.095	5.591
Lebanon / 14-04-2020	USD	700.00	700.00	5.800	100.000	94.900	95.900	94.900	8.155	6.525	2.200	6.077
Lebanon / 19-06-2020	USD	600.00	600.00	6.150	100.000	95.375	96.375	95.375	8.150	6.403	2.296	6.710
Lebanon / 12-04-2021	USD	2,092.47	2,092.47	8.250	100.000	100.852	101.148	100.852	7.957	6.207	2.920	10.580
Lebanon / 27-05-2022	USD	500.00	500.00	6.250	100.000	93.000	94.000	93.000	8.120	6.139	3.740	17.370
Lebanon / 04-10-2022	USD	1,540.00	1,540.00	6.100	100.000	91.600	92.600	91.600	8.219	6.234	3.981	19.709
Lebanon / 27-01-2023	USD	1,100.00	1,100.00	6.000	100.000	91.400	91.950	91.400	8.049	6.067	4.268	22.300
Lebanon / 26-05-2023	USD	500.00	500.00	6.400	100.000	92.500	93.500	92.500	8.105	6.122	4.401	24.170
Lebanon / 22-04-2024	USD	700.00	700.00	6.650	100.000	95.650	95.700	95.650	7.512	5.321	5.113	31.990
Lebanon / 04-11-2024	USD	500.00	538.47	6.250	100.000	90.050	90.975	90.050	8.146	5.976	5.464	36.551
Lebanon / 03-12-2024	USD	250.00	250.00	7.000	100.000	94.493	95.500	94.493	8.035	5.867	5.266	35.350
Lebanon / 26-02-2025	USD	800.00	800.00	6.200	100.000	89.250	90.050	89.250	8.183	6.015	5.583	38.748
Lebanon / 12-06-2025	USD	800.00	800.00	6.250	100.000	89.875	91.875	89.875	8.058	5.887	5.685	40.860
Lebanon / 27-11-2026	USD	1,600.00	1,600.00	6.600	100.000	91.500	91.900	91.500	7.933	5.602	6.383	52.965
Lebanon / 23-03-2027	USD	1,250.00	1,250.00	6.850	100.000	90.400	90.850	90.400	8.345	6.038	6.593	55.921
Lebanon / 29-11-2027	USD	1,000.00	1,000.00	6.750	100.000	89.550	90.700	89.550	8.302	5.996	6.784	61.100
Lebanon / 03-11-2028	USD	500.00	893.20	6.650	100.000	89.200	90.100	89.200	8.157	5.848	7.458	72.352
Lebanon / 25-05-2029	USD	1,000.00	1,000.00	6.850	100.000	90.000	91.000	90.000	8.206	5.898	7.400	74.480
Lebanon / 26-02-2030	USD	1,400.00	1,400.00	6.650	100.000	88.700	89.600	88.700	8.118	5.810	7.899	83.907
Lebanon / 22-04-2031	USD	300.00	300.00	7.000	100.000	89.800	91.200	89.800	8.270	5.961	8.300	93.930
Lebanon / 23-03-2032	USD	1,000.00	1,000.00	7.000	100.000	89.000	89.850	89.000	8.325	6.018	8.528	101.355
Lebanon / 02-11-2035	USD	600.00	600.00	7.050	100.000	88.750	89.000	88.750	8.262	5.953	9.582	134.006
Lebanon / 23-03-2037	USD	750.00	750.00	7.250	100.000	88.610	89.850	88.610	8.454	6.146	9.679	141.477
TOTAL PUBLIC SECTOR EUROBONDS		29,431.180	26,193.21									

EURO CDS

Not Available

LEBANESE PRIVATE SECTOR EUROBONDS

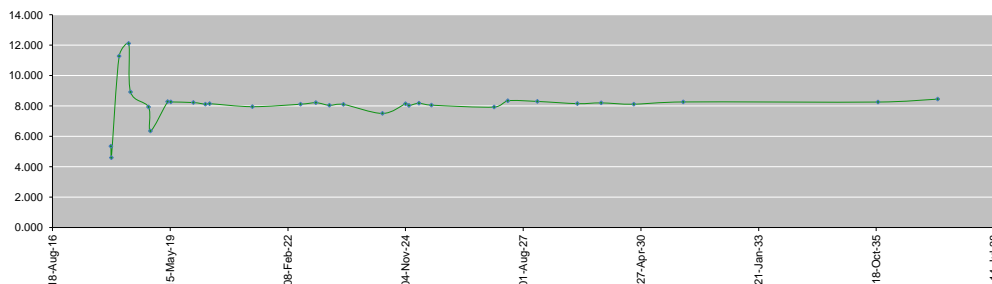
MATURITY	SIZE MM	TYPE	COUPON	Issue P.	BID \$	Ask \$	MID. P	YIELD	SPREAD	DURATION	CONVEXITY
BANK MED S.A.L/14-12-2017	USD 500	Euro CD	5.38	99.46	100.38	100.39	100.38	1.23	0.19	0.09	0.02
BANK BYBLOS S.A.L/21-06-2021	USD 300	Note	7	100	101.62	101.94	101.62	6.49	4.73	3.09	11.88

World Yields in Native Terms	O/N	3 Months	6 Months	9 Months	1 Year	2 Years	3 Years	5 Years	7 Years	10 Years	30 Years
EUR	-	-0.84	-0.76	-0.74	-0.75	-0.76	-0.66	-0.38	-0.13	0.32	1.20
U.S.A	-	1.22	1.33	--	1.52	1.64	1.76	1.99	2.17	2.31	2.77
U.K	-	0.41	0.45	--	0.45	0.44	0.48	0.68	0.90	1.21	1.79
Japan	-	-0.17	-0.24	-0.13	-0.21	-0.20	-0.16	-0.13	-0.08	0.02	0.80

Libor	USD	EUR	JPY	GBP
1 Months	1.24	-0.40	-0.02	0.50
2 Months	1.33	-0.39	-0.05	0.51
3 Months	1.40	-0.38	-0.05	0.53
6 Months	1.59	-0.31	-0.01	0.59
1 Year	1.86	-0.24	0.11	0.77

Spot Rates	Bid	Ask
Lebanese Pound	1511.00	1521.00
Euro	1.16	1.1602
British Sterling Pound	1.31	1.3123
Japanese Yen	113.57	113.6000
Gold	1280.45	1281.26

Lebanese Republic USD Eurobonds Yield Curve



Disclaimer: The Capital Markets Authority (CMA) publishes reports for general information purposes only. However, under no circumstances the CMA will accept any responsibility or liability in connection with the use of the information provided in these reports or on this website.

Contact us by email: research@cma.gov.lb