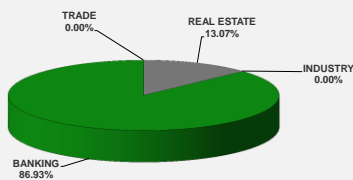


LISTED COMPANIES	LISTED SHARES	MARKET CAP.	TOTAL ORDINARY SHARES	PREFERRED SHARES	PREFERRED SHARES ISSUE PRICE	TOTAL MARKET CAP.	CUR.	TRADED VOLUME	TRADED VALUE	CLOSING PRICE	OPEN PRICE	HIGH PRICE	LOW PRICE	PREVIOUS PRICE
	(MM)	(MM \$)	(MM)	(MM)	USD	(MM \$)								
SOLIERE A	100.00	744.00	100.00			744.00	USD	24,313	180,953	7.44	7.42	7.55	7.41	7.67
SOLIERE B	65.00	484.90	65.00			484.90	USD	5,549	41,378	7.46	7.50	7.50	7.31	7.49
BQ.LIB. POUR LE COMMERCE	71.03	66.06	152.70			142.01	USD	-	-	0.93	-	-	-	0.93
BQ.LIB. POUR LE COMMERCE PEF. "B"	0.55	55.00		0.55		55.00	USD	-	-	100.00	-	-	-	100.00
BQ.LIB. POUR LE COMMERCE PEF. "C"	0.35	35.00		0.35		35.00	USD	-	-	100.00	-	-	-	100.00
BQ.LIB. POUR LE COMMERCE PEF. "D"	0.75	75.00		0.75		75.00	USD	-	-	100.00	-	-	-	100.00
BANQUE AUDI	399.75	2238.60	399.75			2238.60	USD	2,000	11,200	5.60	5.60	5.60	5.60	5.74
BANQUE AUDI GDR	119.92	677.57				677.57	USD	3,530	19,945	5.65	5.65	5.65	5.65	5.82
BANQUE AUDI PREFERRED "G"	1.50	151.35		1.50	100.00	151.35	USD	4,830	487,338	100.90	100.90	100.90	100.70	101.00
BANQUE AUDI PREFERRED "H"	0.75	75.75		0.75	100.00	75.75	USD	1,000	101,000	101.00	101.00	101.00	101.00	101.00
BANQUE AUDI PREFERRED "I"	2.50	251.25		2.50	100.00	251.25	USD	285	28,643	100.50	100.50	100.50	100.50	101.00
BANK OF BEIRUT	17.75	333.63	50.47			948.79	USD	-	-	18.80	-	-	-	18.80
BANK OF BEIRUT PRIORITY	4.76	100.00				100.00	USD	-	-	21.00	-	-	-	21.00
BANK OF BEIRUT PREFERRED SHARES "H"	5.40	138.51		5.40	25.00	138.51	USD	-	-	25.65	-	-	-	25.65
BANK OF BEIRUT PREFERRED SHARES "I"	5.00	127.50		5.00	25.00	127.50	USD	-	-	25.50	-	-	-	25.50
BANK OF BEIRUT PREFERRED SHARES "J"	3.00	76.05		3.00	25.00	76.05	USD	-	-	25.35	-	-	-	25.35
BANK OF BEIRUT PREFERRED SHARES "K"	4.00	101.40		4.00	25.00	101.40	USD	-	-	25.35	-	-	-	25.35
BYBLOS BANK	565.52	882.20	565.52			882.20	USD	133,088	208,289	1.56	1.58	1.58	1.55	1.60
BYBLOS BANK GDR	1.31	101.72				101.72	USD	-	-	77.70	-	-	-	77.70
BYBLOS BANK PREFERRED SHARES 2008	2.00	203.00		2.00	100.00	203.00	USD	500	50,750	101.50	101.50	101.50	101.50	101.60
BYBLOS BANK PREFERRED SHARES 2009	2.00	204.20		2.00	96.00	204.20	USD	1,563	159,582	102.10	102.10	102.10	102.10	102.20
BQ.EUROPEENNE PR.M.O	51.40	66.82	62.00			80.60	USD	-	-	1.30	-	-	-	1.30
BQ.EUROPEENNE PR.M.O PREFERRED 20	0.35	34.91		0.35	100.00	34.91	USD	-	-	99.75	-	-	-	99.75
BLOM BANK GDR	73.90	815.07				815.07	USD	36,800	406,515	11.03	11.05	11.10	11.00	11.13
BLOM BANK	215.00	2352.10	215.00			2352.10	USD	15,000	164,050	10.94	11.00	11.00	10.90	11.00
RASAMNY-YOUNIS MOTORS CO	10.92	35.49	27.30			88.73	USD	-	-	3.25	-	-	-	3.25
HOLCIM Liban	19.52	277.52	19.52			277.52	USD	-	-	14.22	-	-	-	14.22
STE DES CIMENTS BLANCS N	9.00	19.44	3.00			6.48	USD	-	-	2.16	-	-	-	2.16
TOTAL EXECUTED	1,752.92	10,724.05	1,660.25			11,469.21		228,458	\$1,859,643					
Official USD Closing		1507.5												

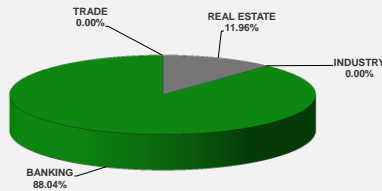
LEBANESE GLOBAL DEPOSITORY RECEIPTS	SHARES MM	BID \$	ASK \$	MID PRICE \$
BLOM BANK	73.90	10.55	11.20	10.88
BYBLOS BANK	1.31	75.00	0.00	75.00
AUDI BANK	116.24	5.55	5.59	5.57

STOCK INDEX	VALUE	PREVIOUS VALUE	% OF CHANGE
MARKET VALUE WEIGHTED INDEX	80.74	82.32	-1.92%
NUMBER OF TRANSACTIONS	52		

BEIRUT STOCK EXCHANGE DAILY TRADING VOLUME



BEIRUT STOCK EXCHANGE DAILY TRADING VALUE \$



Disclaimer: The Capital Markets Authority (CMA) publishes reports for general information purposes only. However, under no circumstances the CMA will accept any responsibility or liability in connection with the use of the information provided in these reports or on this website.

MATURITY	CURRENCY	ISSUED AMOUNT (MM)	OUTSTANDING AMOUNT (MM)	COUPON	ISSUE P.	BID\$	ASK\$	MID. P	YIELD	SPREAD	DURATION	CONVEXITY
Lebanon / 27-12-2017	USD	950.00	32.50	5.000	100.000	99.950	99.960	99.950	5.382	4.396	0.102	0.021
Lebanon / 31-12-2017	USD	2,007.51	100.38	4.000	100.000	99.500	100.000	99.500	8.411	7.315	0.110	0.024
Lebanon / 07-03-2018	USD	700.00	35.00	5.000	100.000	98.000	98.250	98.000	11.846	10.650	0.287	0.165
Lebanon / 27-05-2018	USD	200.00	20.00	5.000	100.000	98.000	98.250	98.000	12.890	7.630	0.244	0.230
Lebanon / 12-06-2018	USD	700.00	700.00	5.150	100.000	98.625	100.625	98.625	7.691	6.297	0.533	0.550
Lebanon / 12-11-2018	USD	1,025.00	1,025.00	5.150	100.000	97.440	98.429	97.440	7.920	6.352	0.931	1.321
Lebanon / 28-11-2018	EUR	445.00	445.00	5.350	100.000	100.000	101.000	100.000	5.347	6.081	0.927	1.786
Lebanon / 23-04-2019	USD	500.00	500.00	6.750	100.000	96.750	97.750	96.750	7.952	6.408	1.334	2.450
Lebanon / 20-05-2019	USD	650.00	650.00	6.000	100.000	97.050	98.390	97.050	8.129	6.416	1.403	2.680
Lebanon / 28-11-2019	USD	1,500.00	1,500.00	5.450	100.000	94.950	96.300	94.950	8.210	6.500	1.818	4.350
Lebanon / 09-03-2020	USD	1,200.00	1,200.00	6.375	100.000	96.670	97.600	96.670	7.979	6.274	2.070	5.475
Lebanon / 14-04-2020	USD	700.00	700.00	5.800	100.000	94.750	95.750	94.750	8.252	6.546	2.172	5.941
Lebanon / 19-06-2020	USD	600.00	600.00	6.150	100.000	95.250	96.250	95.250	8.227	6.406	2.269	6.570
Lebanon / 12-04-2021	USD	2,092.47	2,092.47	8.250	100.000	100.038	100.329	100.038	8.232	6.411	2.887	10.380
Lebanon / 27-05-2022	USD	500.00	500.00	6.250	100.000	92.750	93.750	92.750	8.201	6.134	3.711	17.140
Lebanon / 04-10-2022	USD	1,540.00	1,540.00	6.100	100.000	91.700	92.650	91.700	8.202	6.137	4.087	20.133
Lebanon / 27-01-2023	USD	1,100.00	1,100.00	6.000	100.000	91.150	91.470	91.150	8.122	6.059	4.237	22.030
Lebanon / 26-05-2023	USD	500.00	500.00	6.400	100.000	91.500	92.500	91.500	8.354	6.283	4.363	23.820
Lebanon / 22-04-2024	USD	700.00	700.00	6.650	100.000	90.800	92.200	90.800	8.539	6.299	5.032	31.170
Lebanon / 04-11-2024	USD	500.00	538.47	6.250	100.000	89.900	90.800	89.900	8.182	5.934	5.435	36.220
Lebanon / 03-12-2024	USD	250.00	250.00	7.000	100.000	94.150	94.840	94.150	8.106	5.865	5.232	34.979
Lebanon / 26-02-2025	USD	800.00	800.00	6.200	100.000	89.460	90.000	89.460	8.148	5.903	5.557	38.446
Lebanon / 12-06-2025	USD	800.00	800.00	6.250	100.000	89.500	91.500	89.500	8.135	5.906	5.652	40.470
Lebanon / 27-11-2026	USD	1,600.00	1,600.00	6.600	100.000	89.950	90.500	89.950	8.198	5.839	6.323	52.207
Lebanon / 23-03-2027	USD	1,250.00	1,250.00	6.850	100.000	90.650	90.720	90.650	8.306	5.956	6.567	55.569
Lebanon / 29-11-2027	USD	1,000.00	1,000.00	6.750	100.000	89.600	90.450	89.600	8.298	5.936	6.755	60.690
Lebanon / 03-11-2028	USD	500.00	893.20	6.650	100.000	89.000	89.350	89.000	8.190	5.837	7.419	71.766
Lebanon / 25-05-2029	USD	1,000.00	1,000.00	6.850	100.000	90.000	91.000	90.000	8.209	5.848	7.373	74.060
Lebanon / 26-02-2030	USD	1,400.00	1,400.00	6.650	100.000	87.500	88.650	87.500	8.291	5.937	7.840	82.964
Lebanon / 22-04-2031	USD	300.00	300.00	7.000	100.000	90.300	91.700	90.300	8.204	5.850	8.289	93.750
Lebanon / 23-03-2032	USD	1,000.00	1,000.00	7.000	100.000	88.650	89.940	88.650	8.372	6.022	8.496	100.798
Lebanon / 02-11-2035	USD	600.00	600.00	7.050	100.000	88.350	89.800	88.350	8.310	5.956	9.565	133.683
Lebanon / 23-03-2037	USD	750.00	750.00	7.250	100.000	89.100	89.900	89.100	8.398	6.045	9.667	141.263
TOTAL PUBLIC SECTOR EUROBONDS		29,438.879	26,200.91									

EURO CDS

Not Available

LEBANESE PRIVATE SECTOR EUROBONDS

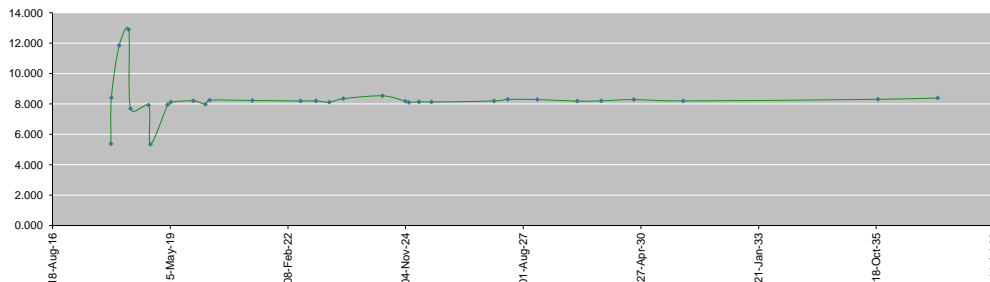
MATURITY	SIZE MM	TYPE	COUPON	Issue P.	BID \$	Ask \$	MID. P	YIELD	SPREAD	DURATION	CONVEXITY
BANK MED S.A.L/14-12-2017	USD 500	Euro CD	5.38	99.46	100.26	100.27	100.26	1.26	0.19	0.07	0.01
BANK BYBLOS S.A.L/21-06-2021	USD 300	Note	7	100	101.36	101.68	101.36	6.57	4.75	3.06	11.69

World Yields in Native Terms	O/N	3 Months	6 Months	9 Months	1 Year	2 Years	3 Years	5 Years	7 Years	10 Years	30 Years
EUR	-	-0.89	-0.76	-0.73	-0.74	-0.74	-0.63	-0.34	-0.07	0.38	1.26
U.S.A	-	1.25	1.39	--	1.56	1.71	1.83	2.06	2.24	2.35	2.79
U.K	-	0.42	0.47	--	0.46	0.49	0.53	0.76	0.99	1.30	1.87
Japan	-	-0.17	-0.18	-0.12	-0.19	-0.19	-0.15	-0.12	-0.05	0.04	0.82

Libor	USD	EUR	JPY	GBP
1 Months	1.27	-0.40	-0.02	0.50
2 Months	1.36	-0.39	-0.04	0.51
3 Months	1.42	-0.38	-0.04	0.53
6 Months	1.62	-0.32	-0.01	0.59
1 Year	1.89	-0.25	0.11	0.78

Spot Rates	Bid	Ask
Lebanese Pound	1511.00	1521.00
Euro	1.18	1.1776
British Sterling Pound	1.32	1.3193
Japanese Yen	113.05	113.0600
Gold	1279.21	1279.98

Lebanese Republic USD Eurobonds Yield Curve



Disclaimer: The Capital Markets Authority (CMA) publishes reports for general information purposes only. However, under no circumstances the CMA will accept any responsibility or liability in connection with the use of the information provided in these reports or on this website.

Contact us by email: research@cma.gov.lb